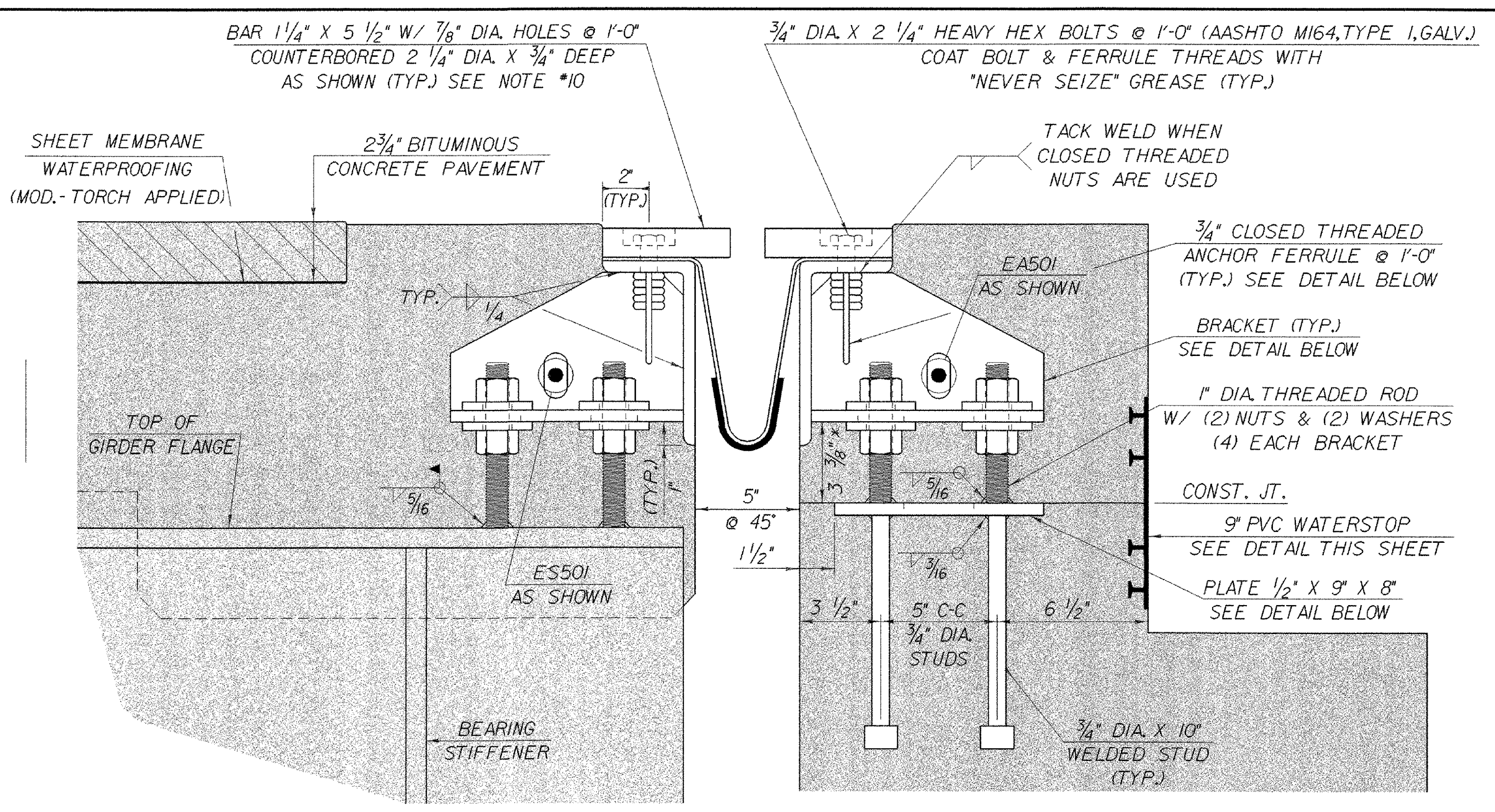


TYPICAL SECTION BETWEEN GIRDERS
SCALE: 3" = 1'-0" (NORMAL TO C BEARING)



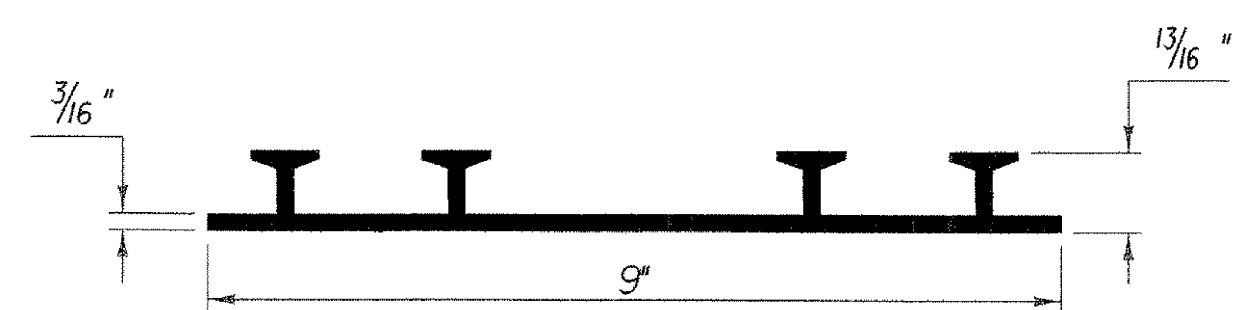
TYPICAL SECTION AT GIRDERS
SCALE: 3" = 1'-0" (NORMAL TO C BEARING)

1" DIA. DRAIN TUBE AT
FACE OF CURB ON LOW
SIDE (SEE NOTE *9
ON THIS SHEET)

*THESE DIMENSIONS ARE THEORETICAL
AND MAY CHANGE DEPENDING UPON THE
OUTCOME OF THE BEAM PROFILES.

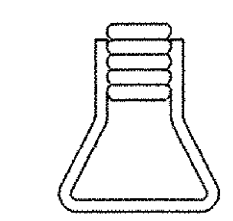
- DETAILS ON THIS SHEET ARE FOR ITEM 516.10 "BRIDGE EXPANSION JOINT".
- PREFORMED FABRIC MATERIAL SHALL BE CONTINUOUS AND SHALL CONFORM TO SUBSECTION 707.07 OF THE STANDARD SPECIFICATIONS.
- BUTYL RUBBER TAPE SHALL CONFORM TO AASHTO SPECIFICATION M-198, TYPE B.
- THE FINAL FINISH OF THE EXPANSION DEVICE SHALL BE COVERED DURING THE PLACING OF BRIDGE DECK CONCRETE.
- ALL STEEL COMPONENTS SHALL BE AASHTO M270 GRADE 36, THREADED ROD SHALL CONFORM TO AASHTO AND NUTS SHALL CONFORM TO AASHTO M291, GALVANIZED OR METALIZED AS PER SUBSECTION 506.15 (a) OR (b) OF THE STANDARD SPECIFICATION, AS MODIFIED BY THE GENERAL SPECIAL PROVISIONS UNLESS OTHERWISE SPECIFIED.
- THE ITEM "BRIDGE EXPANSION JOINT" SHALL INCLUDE THE FABRICATION AND ERECTION OF THE COMPLETE JOINT ASSEMBLY INCLUDING ALL STEEL PLATES, BRACKETS, ANGLES, WELDED STUDS OR RODS, PREFORMED FABRIC DRAIN TROUGH MATERIAL AND PLASTIC DRAIN TUBES, BUTYL RUBBER TAPE AND ANY OTHER MISCELLANEOUS MATERIAL NECESSARY TO INSTALL JOINT.
- THE 4" X 8" X 1/2" ANGLES SHALL BE FURNISHED AS ONE CONTINUOUS PIECE. THE 1 1/4" X 5 1/2" BARS EACH SIDE OF THE JOINT SHALL BE PROVIDED IN TWO EQUAL LENGTHS.
- COAT CONCRETE CONTACT SURFACES WITH EPOXY BONDING COMPOUND MEETING THE REQUIREMENTS OF SUBSECTION 719.02 OF THE STANDARD SPECIFICATIONS. PAYMENT SHALL BE INCLUDED IN THE UNIT PRICE BID FOR ITEM 516.10 "BRIDGE EXPANSION JOINT".
- A 1" DIAMETER PLASTIC DRAIN TUBE (PER STD. SPEC. 740.06) SHALL BE INSTALLED AS SHOWN AT THE FACE OF CURB. THE UPPER END IS TO BE PLUGGED WITH STEEL WOOL AND THE LOWER END IS TO EXTEND BELOW THE BOTTOM OF THE ADJACENT GIRDER. THE DRAIN TUBES SHALL BE FASTENED TO THE GIRDERS USING A METHOD APPROVED BY THE ENGINEER.
- FILL COUNTERBORED HOLES WITH HOT Poured JOINT SEALER (STD. SPEC. 707.04 AS MODIFIED BY THE GENERAL SPECIAL PROVISIONS) AFTER BOLT INSTALLATION. PAYMENT FOR THE WORK SHALL BE SUBSIDIARY TO ITEM 516.10.

- PAYMENT FOR WATERSTOP SHALL BE SUBSIDIARY TO CONCRETE PAY ITEM.
- A DRIP BEAD OF 1/4" X 7" STRIP OF PREFORMED MATERIAL SHALL BE CEMENTED TO THE BOTTOM OF THE FABRIC TROUGH USING AN ADHESIVE APPROVED BY THE MANUFACTURER. THE DRIP BEAD SHALL BE APPLIED 1" FROM THE DOWNSPOUT END OF THE TROUGH.
- FABRIC TROUGH SHALL BE THOROUGHLY CLEANED AND FLUSHED AFTER PAVING OPERATION.
- THE EXPANSION JOINT SHALL BE SHOP ASSEMBLED AND SHIPPED AS ONE UNIT.



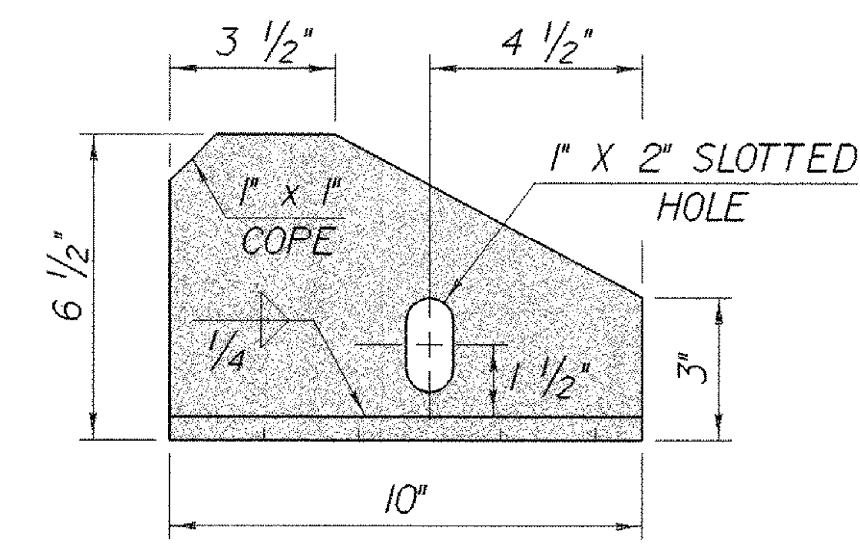
P.V.C. WATERSTOP FOR CONSTRUCTION JOINTS
THE COSTS FOR P.V.C. WATERSTOP SHALL BE INCLUDED IN THE UNIT PRICE BID FOR CONCRETE. OTHER CONFIGURATIONS MAY BE USED UPON APPROVAL OF THE STRUCTURES ENGINEER.

DAYTON/RICHMOND TYPE LF,
3/4" DIA. CLOSED FERRULE
OR EQUIVALENT

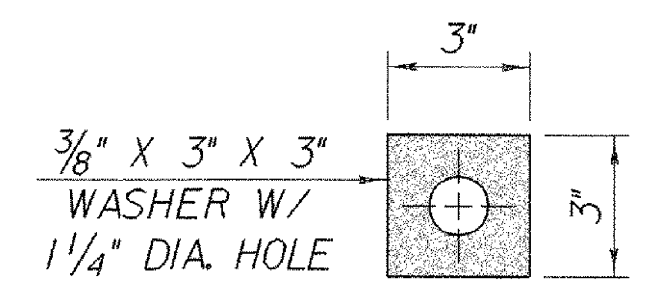


ANCHOR FERRULE DETAIL
SCALE: 3" = 1'-0"

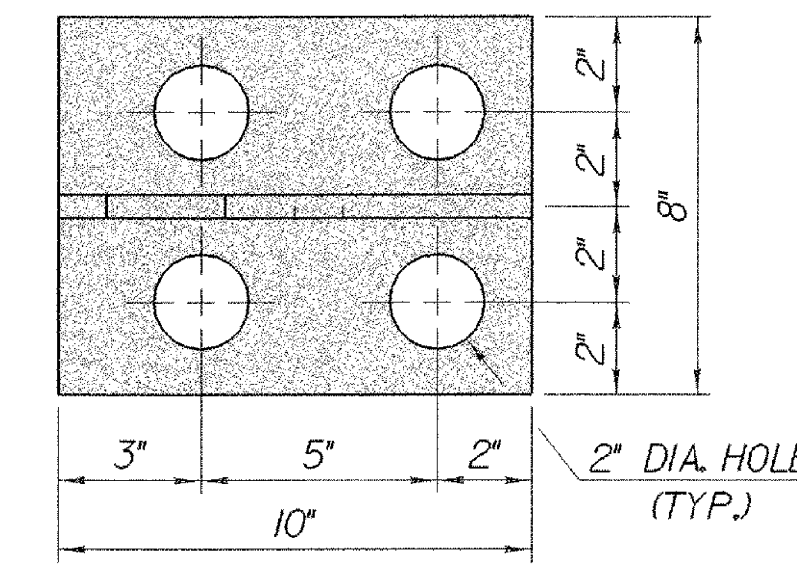
NOTE:
CLOSED THREADED FERRULE NUTS
WITHOUT ANCHOR LOOPS MAY BE USED.



BRACKET ELEVATION
SCALE: 3" = 1'-0"



WASHER FOR BRACKET
SCALE: 3" = 1'-0"



BRACKET PLAN
SCALE: 3" = 1'-0"

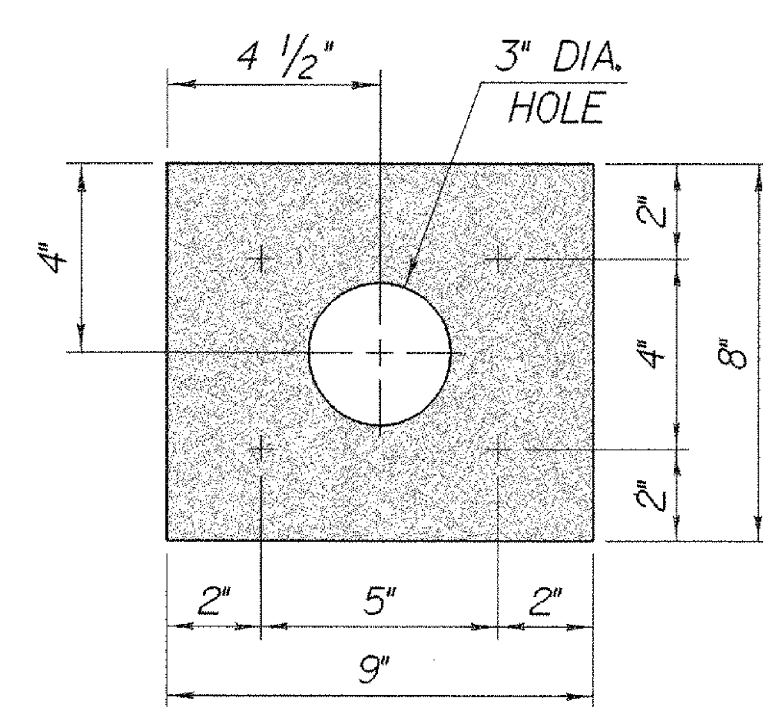


PLATE PLAN
SCALE: 3" = 1'-0"

ALL PLATES 1/2"

TEMP	*A* DIST	
	ABUT.* 1	ABUT.* 2
0° F	2 3/8"	2 3/4"
15° F	2 1/4"	2 1/2"
30° F	2 1/8"	2 1/4"
45° F	2"	2"
60° F	1 7/8"	1 3/4"
75° F	1 3/4"	1 1/2"
90° F	1 5/8"	1 1/4"
105° F	1 1/2"	1"

**STATE OF VERMONT
AGENCY OF TRANSPORTATION**

Town of **WOODFORD** Bridge No. **BR 11**

Highway No. **VT 9** Log Sta.

VT 9 OVER ROARING BRANCH OF WALLOOMSAC Surv. Sta.

EXPANSION JOINT DETAILS

Designed By **M.EVANS-MONGEON** Drawn By **R.VANHAMBURG**

Checked By **M.EVANS-MONGEON** Date Bridge Design Supervisor **A.PORTALUPI** Date

PROJECT **WOODFORD** PROJECT NO. **BHF 010-1(29)**

I.G.C. Info. **/84e039/se039exp.dgn** se039exp.dgn

Bridge Sheet No. Sheet **63** of **106**