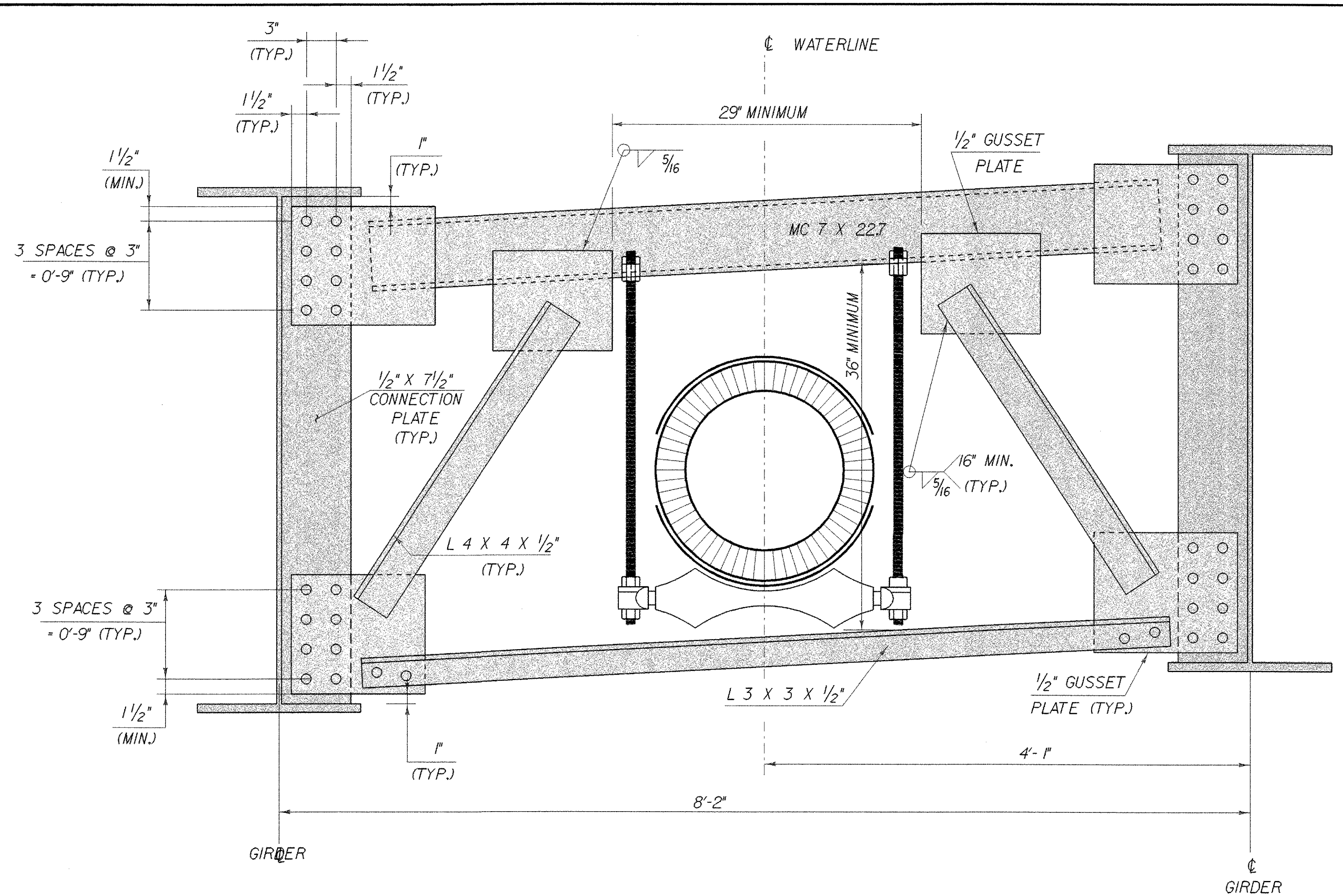
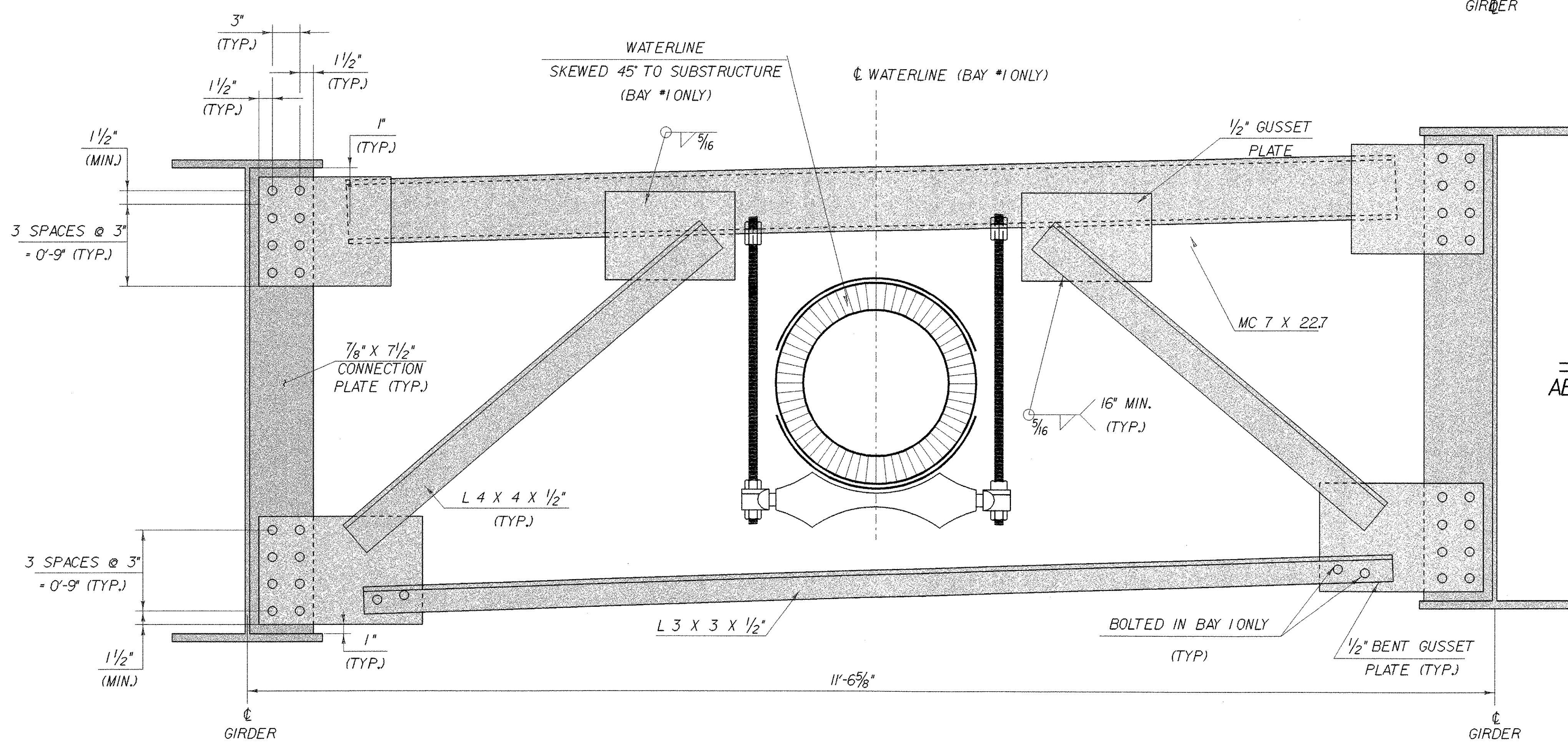


UTILITY CONNECTION  
(BETWEEN CROSSFRAMES IN BAY #1)  
SCALE 1 1/2" = 1'-0"  
1 9 6 3 0 1



INTERMEDIATE CROSSFRAMES  
(IN BAY #1 ONLY)  
SCALE 1 1/2" = 1'-0"  
1 9 6 3 0 1



BAY #1  
ABUTMENT AND PIER CROSSFRAMES  
SCALE 1 1/2" = 1'-0"  
1 9 6 3 0 1

<b>STATE OF VERMONT AGENCY OF TRANSPORTATION</b>	
Town Of <b>WOODFORD</b>	Bridge No. <b>BR11</b>
Highway No. <b>VT 9</b>	Log Sta. <b>VT 9 OVER ROARING BRANCH OF WALLOOMSAC</b>
<b>UTILITY CONNECTIONS</b>	
Designed By <b>M.EVANS-MONGEON</b>	Drawn By <b>M.EVANS-MONGEON</b>
Checked By <b>Date</b>	Bridge Design Supervisor <b>A.PORTALUPI Date</b>
PROJECT <b>WOODFORD</b>	PROJECT NO. <b>BHF 010-1(29)</b>
I.G.C. Info. <b>/84e039/structures/se039sup.dgn</b>	se039utcl
Bridge Sheet No.	Sheet 56 of 106