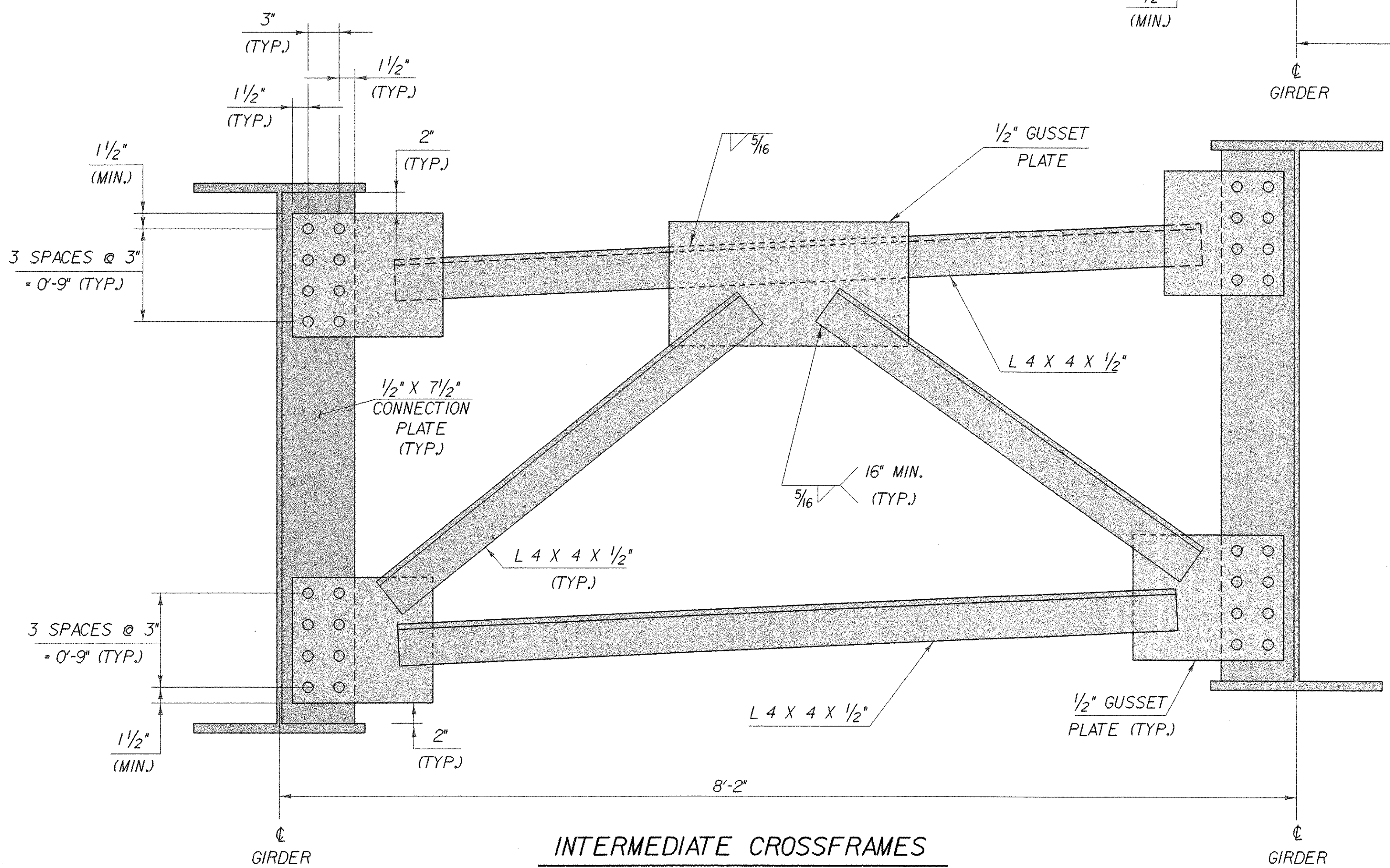
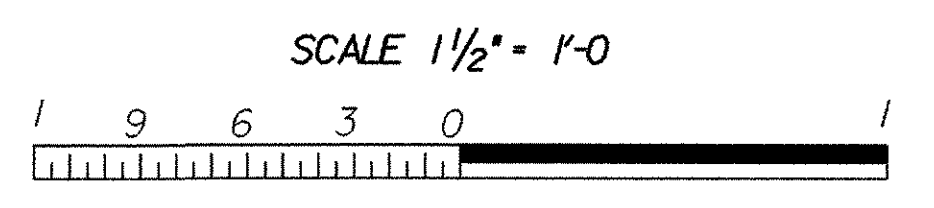
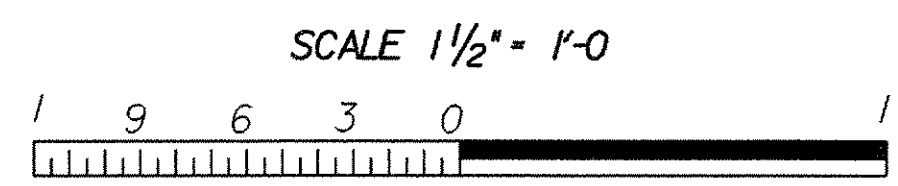


ABUTMENT AND PIER CROSSFRAMES
(BAYS 2 THRU 4)



INTERMEDIATE CROSSFRAMES
(BAYS 2 THRU 4)



STATE OF VERMONT AGENCY OF TRANSPORTATION	
Town Of WOODFORD	Bridge No. BR11
Highway No. VT 9	Log Sta.
VT 9 OVER ROARING BRANCH OF WALLOOMSAC	
CROSSFRAME DETAILS	
Designed By M.EVANS-MONGEON	Drawn By M.EVANS-MONGEON
Checked By _____ Date _____	Bridge Design Supervisor A.PORTALUPI Date _____
PROJECT WOODFORD	PROJECT NO. BRF 010-(29)
I.G.C. Info. /84e039/structures/se039supdgn	se039xfr1
Bridge Sheet No. _____	Sheet 55 of 106