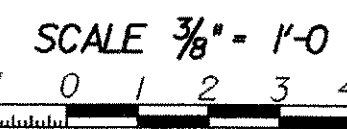


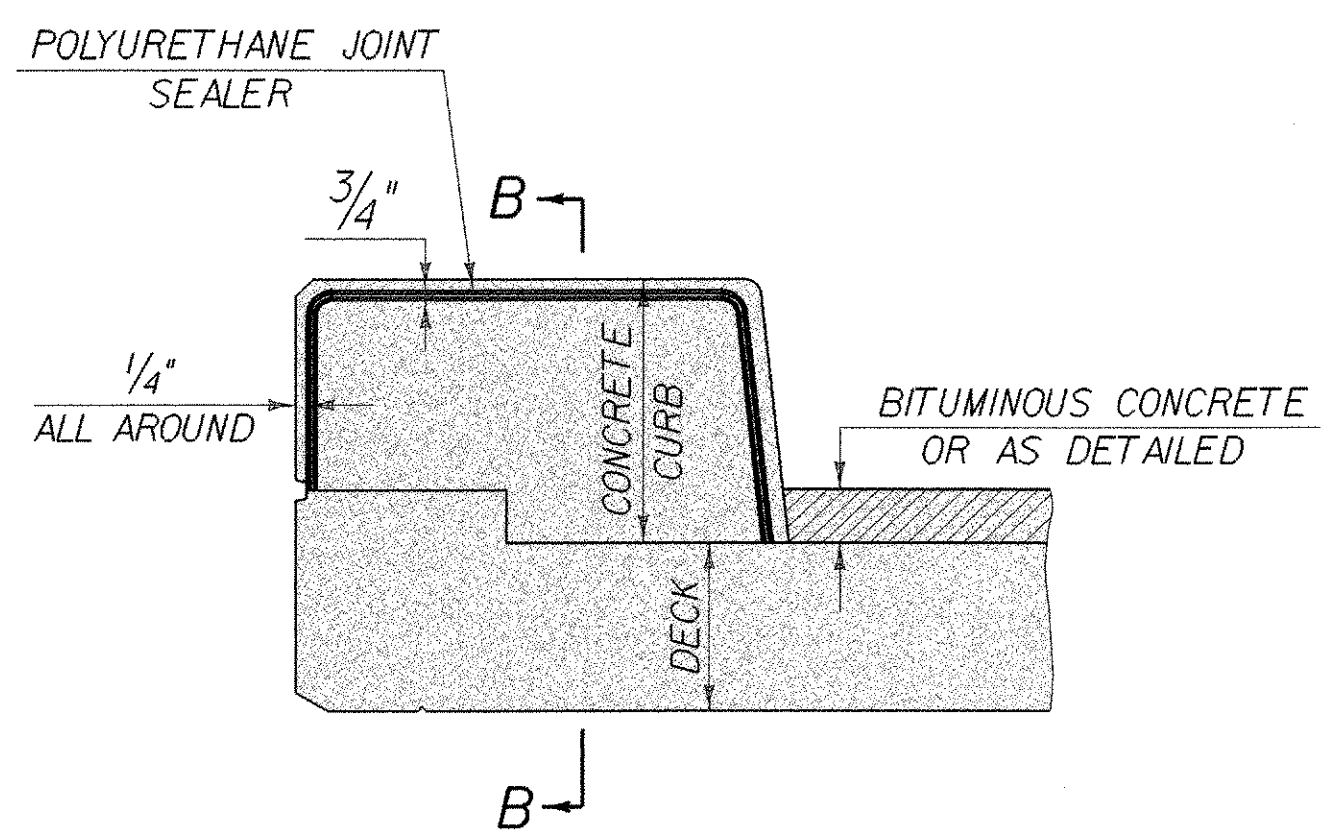
BRIDGE TYPICAL SECTION



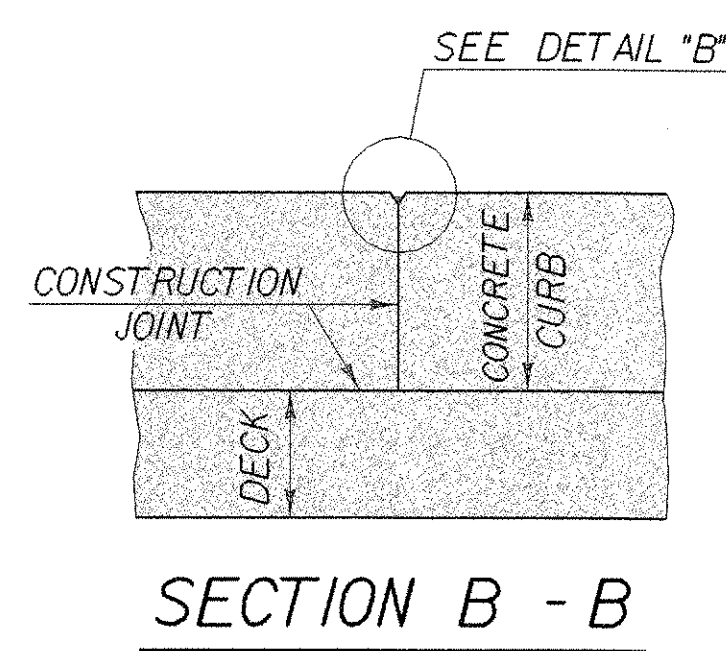
* (SECOND LIFT: 1/2" TYPE III OR IV
FIRST LIFT: 1/4" TYPE III OR IV)

NOTE:

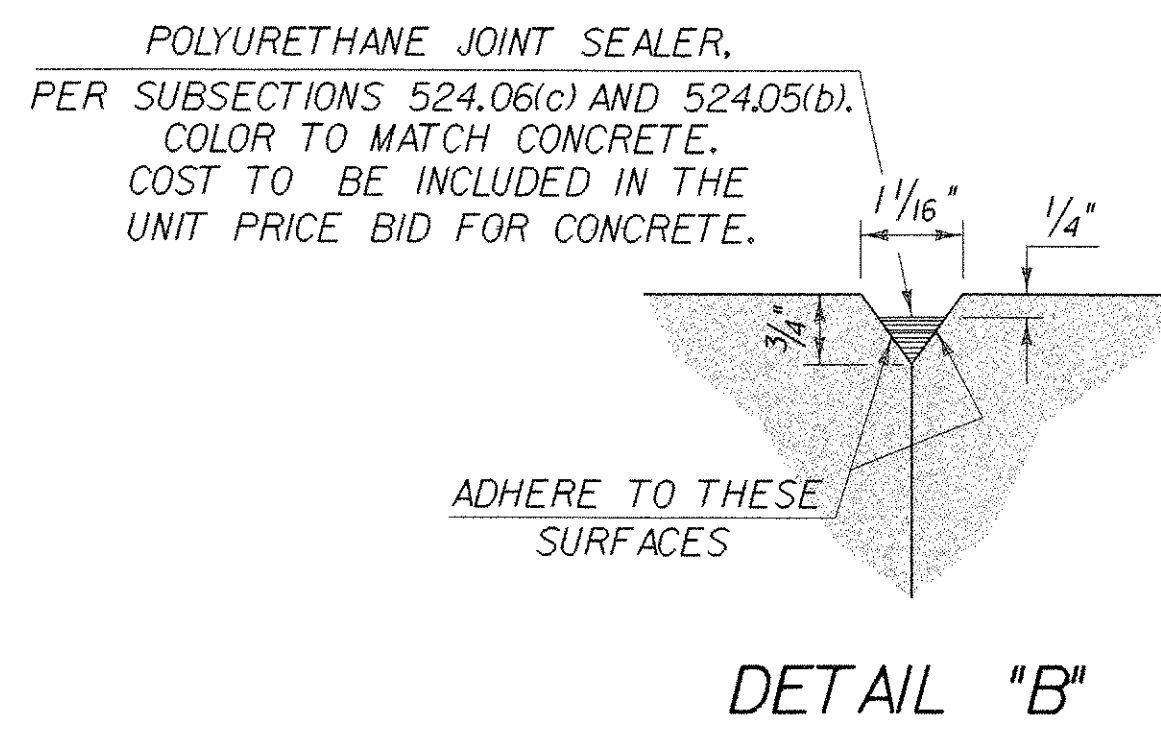
NF = NEAR FACE
FF = FAR FACE
EF = EACH FACE
▲ = CUT TO FIT IN FIELD
3" CLR. UNLESS OTHERWISE SPECIFIED ON THE PLANS.



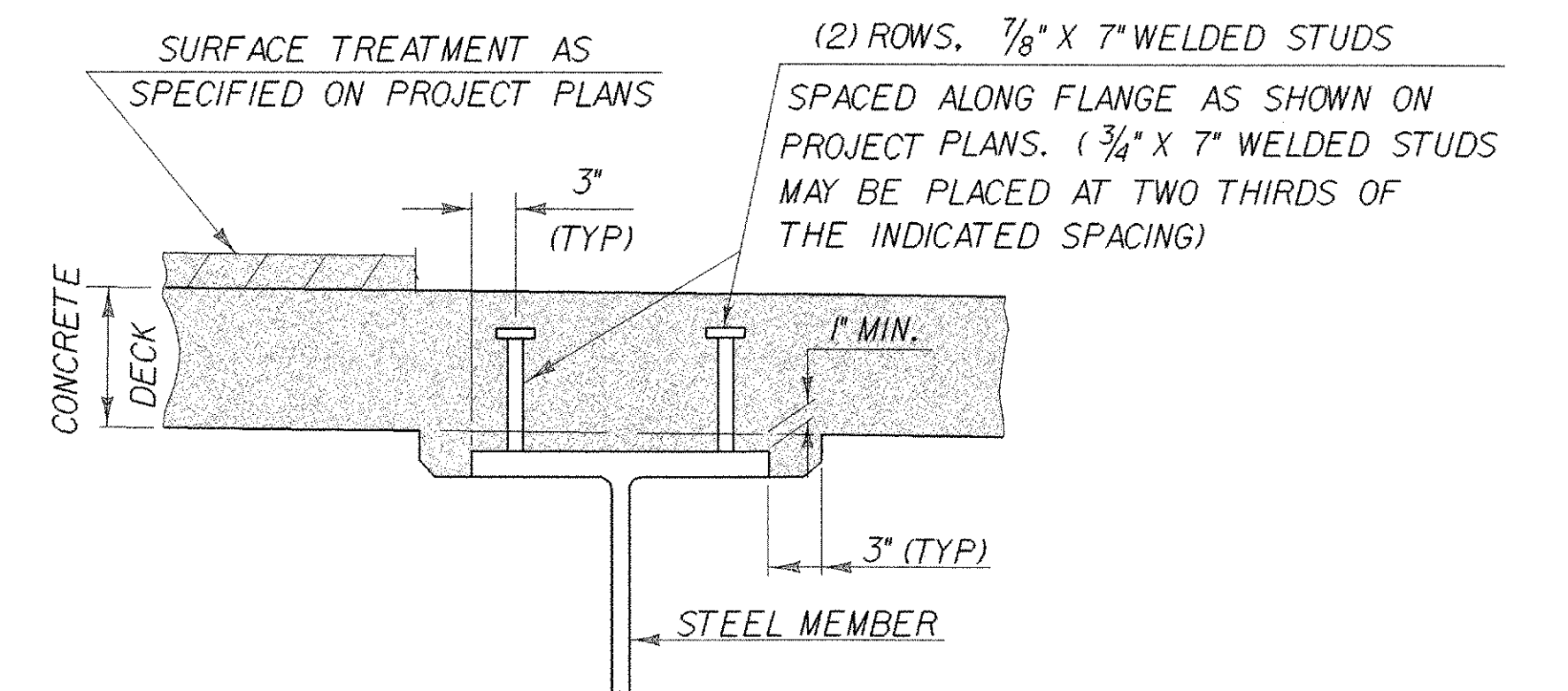
TYPICAL SECTION THROUGH CONCRETE CURB CONSTRUCTION JOINT



- NOTES:
- CONSTRUCTION JOINTS THROUGH CONCRETE CURBS SHALL BE SPACED MAXIMUM 15'-0" CENTER TO CENTER AND SHALL BE 1'-6" MINIMUM FROM THE CENTER OF THE NEAREST BRIDGE RAIL POST. CONCRETE SHALL BE PLACED IN ALTERNATING SECTIONS WITH A MINIMUM OF 48 HOURS DELAY BETWEEN ADJACENT POURS.
 - LONGITUDINAL REINFORCING SHALL PASS THROUGH CONCRETE CURB CONSTRUCTION JOINTS.

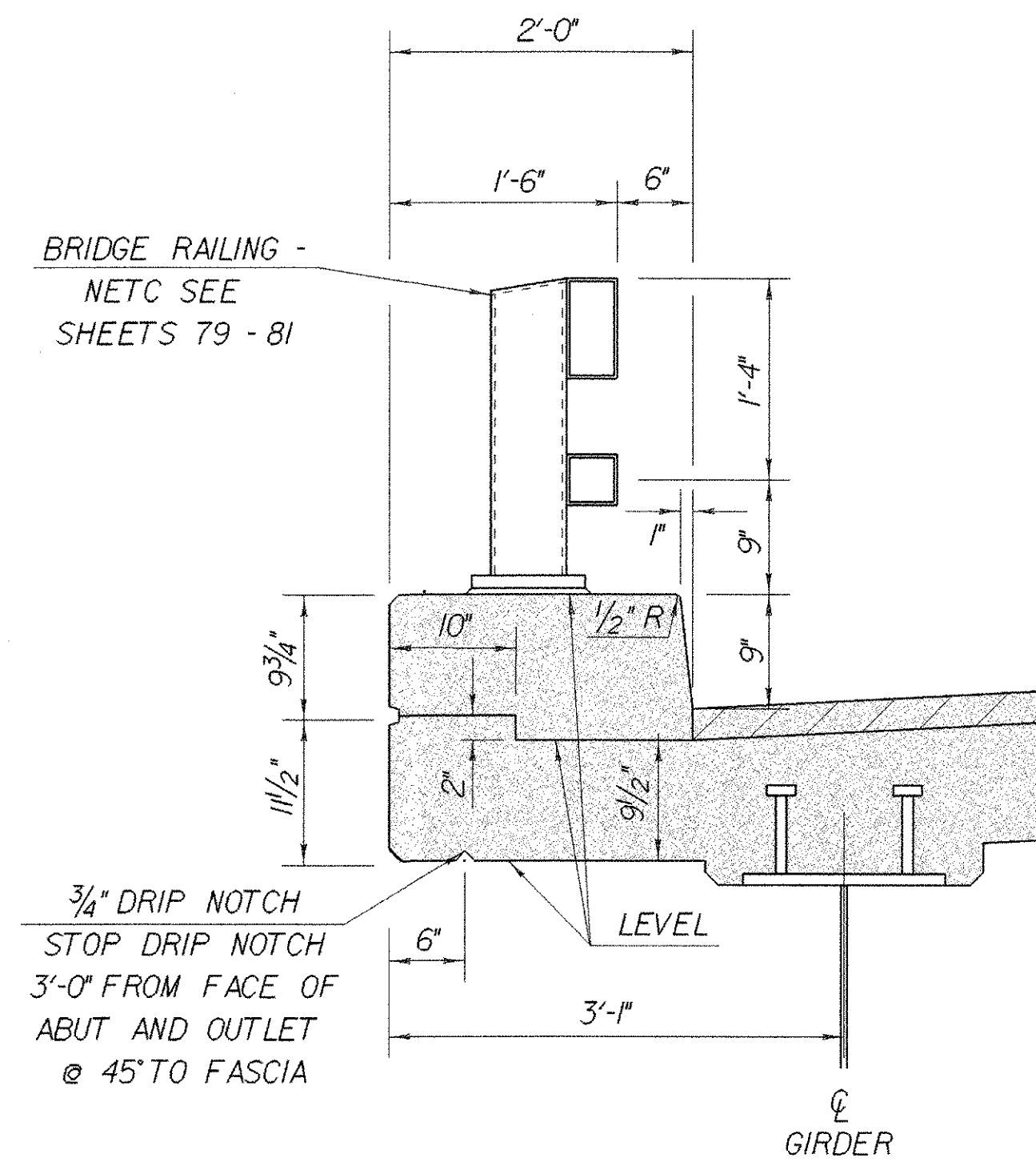


DETAIL "B"



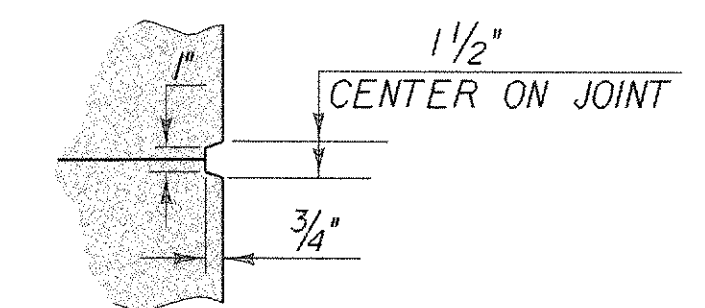
HAUNCH AND SHEAR CONNECTOR DETAILS

SCALE: 1" = 1'-0"



CURB SECTION

SCALE: 2" = 1'-0"



SCORE MARK DETAIL

DECK TYPICAL SHEET

STATE OF VERMONT
AGENCY OF TRANSPORTATION

Town Of	WOODFORD	Bridge No.	BR 11
Highway No.	VT 9	Log. Sta.	
		Surv. Sta.	
VT 9 OVER ROARING BRANCH			
DECK TYPICAL AND DETAILS			
Designed By	M.EVANS-MONGEON	Drawn By	R.PELLETT
Checked By	M.EVANS-MONGEON	Bridge Design Supervisor	A.PORTALUPI
PROJECT	WOODFORD	PROJECT NO.	BHF 010-(129)
I.G.C. Info.	/84e039/se039sup.dgn		se039dck1
Bridge Sheet No.		Sheet 50	of 106