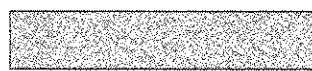



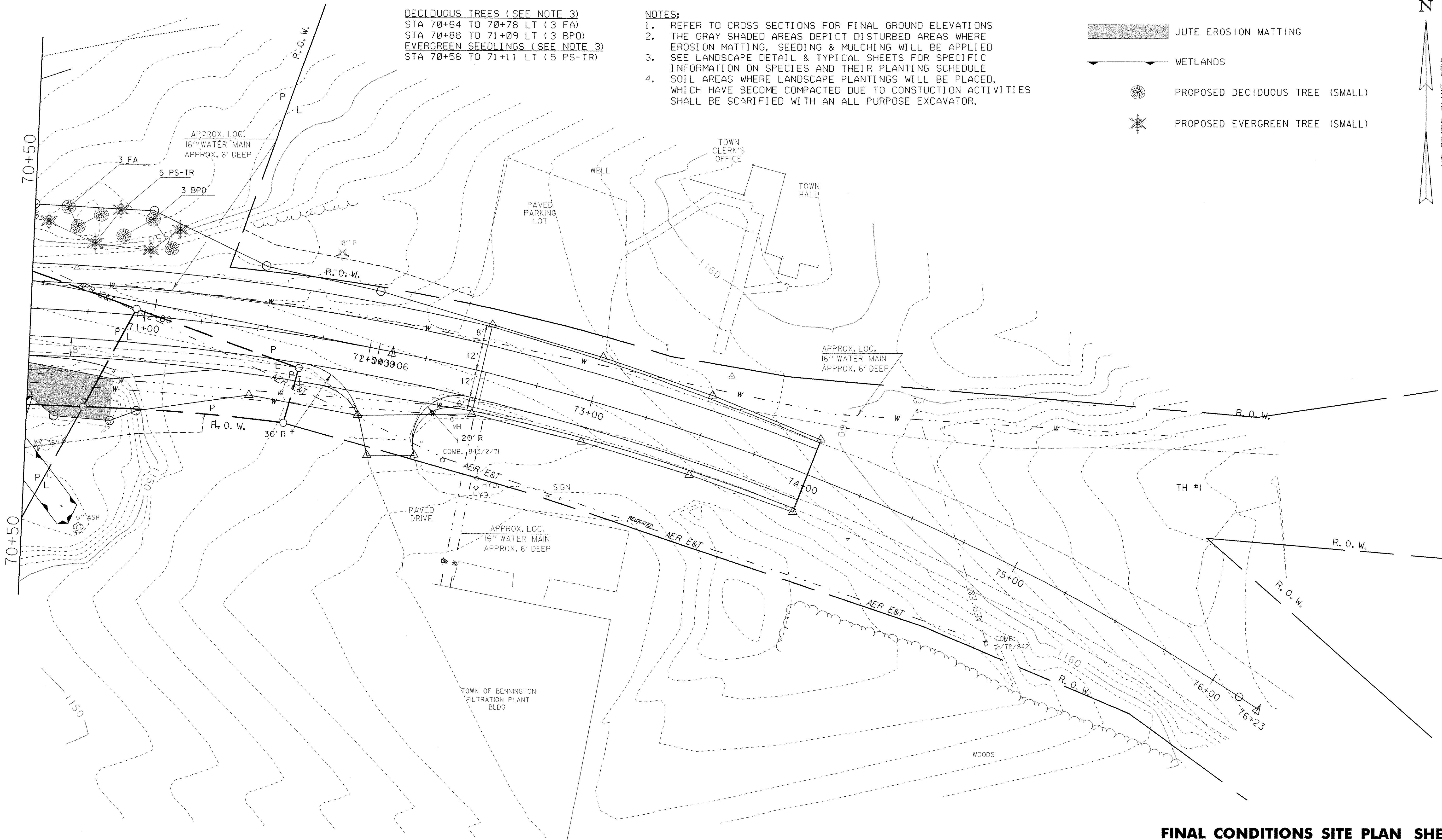
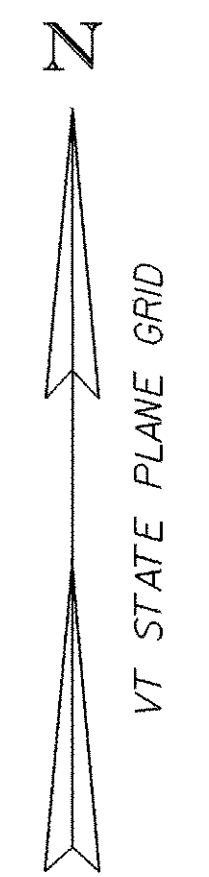



DECIDUOUS TREES (SEE NOTE 3)
 STA 70+64 TO 70+78 LT (3 FA)
 STA 70+88 TO 71+09 LT (3 BPO)
 EVERGREEN SEEDLINGS (SEE NOTE 3)
 STA 70+56 TO 71+11 LT (5 PS-TR)

- NOTES:
1. REFER TO CROSS SECTIONS FOR FINAL GROUND ELEVATIONS
 2. THE GRAY SHADED AREAS DEPICT DISTURBED AREAS WHERE EROSION MATTING, SEEDING & MULCHING WILL BE APPLIED
 3. SEE LANDSCAPE DETAIL & TYPICAL SHEETS FOR SPECIFIC INFORMATION ON SPECIES AND THEIR PLANTING SCHEDULE
 4. SOIL AREAS WHERE LANDSCAPE PLANTINGS WILL BE PLACED, WHICH HAVE BECOME COMPACTED DUE TO CONSTRUCTION ACTIVITIES SHALL BE SCARIFIED WITH AN ALL PURPOSE EXCAVATOR.

-  JUTE EROSION MATTING
-  WETLANDS
-  PROPOSED DECIDUOUS TREE (SMALL)
-  PROPOSED EVERGREEN TREE (SMALL)



DATUM
 VERTICAL NGVD 1929
 HORIZONTAL N/A

SCALE 1" = 20'-0"


FINAL CONDITIONS SITE PLAN SHEET #3

PROJECT NAME: WOODFORD	PLOT DATE: 03-OCT-2005
PROJECT NUMBER: BHF 010-I(29)	DRAWN BY: W FARLEY
FILE NAME: 84e039/structures/84e039erobdr.dgn	CHECKED BY:
PROJECT LEADER: M EVANS-MONGEON	SHEET 33 OF 106
DESIGNED BY: W FARLEY	
IPARM: epscfinal3.i	