








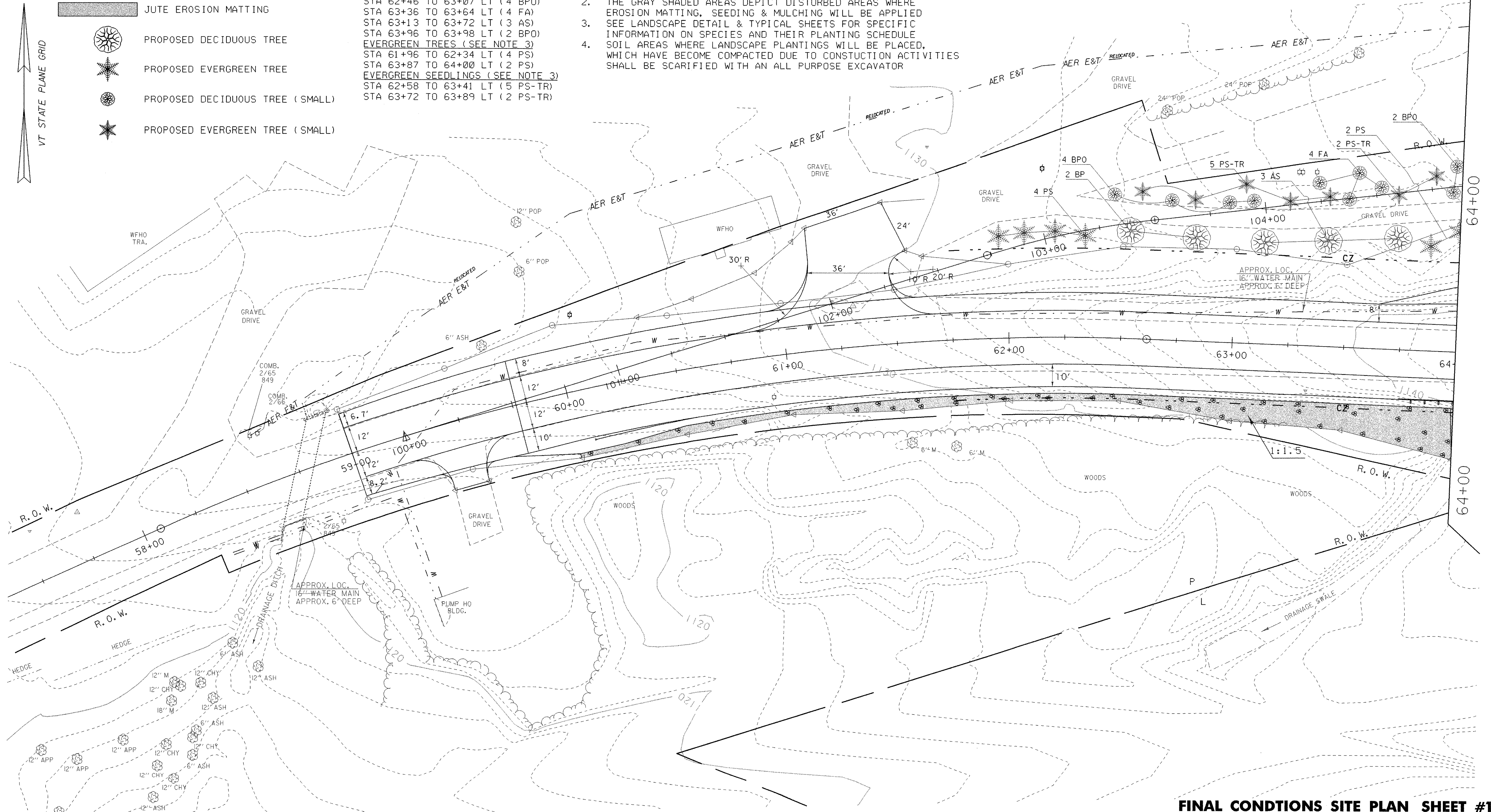
**LEGEND**

-  JUTE EROSION MATTING
-  PROPOSED DECIDUOUS TREE
-  PROPOSED EVERGREEN TREE
-  PROPOSED DECIDUOUS TREE (SMALL)
-  PROPOSED EVERGREEN TREE (SMALL)

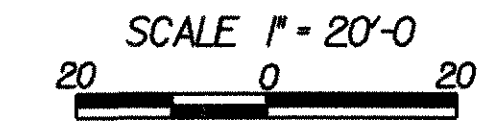
- DECIDUOUS TREES (SEE NOTE 3)**  
 STA 62+53 TO 62+82 LT (2 BP)  
 STA 62+46 TO 63+07 LT (4 BPO)  
 STA 63+36 TO 63+64 LT (4 FA)  
 STA 63+13 TO 63+72 LT (3 AS)  
 STA 63+96 TO 63+98 LT (2 BPO)  
**EVERGREEN TREES (SEE NOTE 3)**  
 STA 61+96 TO 62+34 LT (4 PS)  
 STA 63+87 TO 64+00 LT (2 PS)  
**EVERGREEN SEEDLINGS (SEE NOTE 3)**  
 STA 62+58 TO 63+41 LT (5 PS-TR)  
 STA 63+72 TO 63+89 LT (2 PS-TR)

**NOTES:**

1. REFER TO CROSS SECTIONS FOR FINAL GROUND ELEVATIONS
2. THE GRAY SHADED AREAS DEPICT DISTURBED AREAS WHERE EROSION MATTING, SEEDING & MULCHING WILL BE APPLIED
3. SEE LANDSCAPE DETAIL & TYPICAL SHEETS FOR SPECIFIC INFORMATION ON SPECIES AND THEIR PLANTING SCHEDULE
4. SOIL AREAS WHERE LANDSCAPE PLANTINGS WILL BE PLACED, WHICH HAVE BECOME COMPACTED DUE TO CONSTRUCTION ACTIVITIES SHALL BE SCARIFIED WITH AN ALL PURPOSE EXCAVATOR



<b>DATUM</b>	
VERTICAL	NGVD 1929
HORIZONTAL	N/A



**FINAL CONDITIONS SITE PLAN SHEET #1**

PROJECT NAME:	WOODFORD
PROJECT NUMBER:	BHF 010-1(29)
FILE NAME:	84e039/structures/84e039erobdr.dgn
PROJECT LEADER:	M EVANS-MONGEON
DESIGNED BY:	W FARLEY
IPARM:	epscfinal.j
PLOT DATE:	03-OCT-2005
DRAWN BY:	W FARLEY
CHECKED BY:	
SHEET	31 OF 106