

Detour PI
106+16.10 bk =
106+14.67 ahd

64+91.46
END ROADWAY
BEGIN BRIDGE
F.G. 1144.79

SMITH, PHYLLIS L.

67+70.54
END BRIDGE
RESUME ROADWAY
F.G. 1151.04

70+50
END PROJECT
BEGIN APPROACH

HEAVY DUTY STEEL BEAM GUARD RAIL

64+35.7 - 64+85.7 LT
64+00.0 - 64+40.3 RT
67+76.3 - 70+50.0 RT
68+21.7 - 69+46.7 LT

REMOVAL AND DISPOSAL OF GUARD RAIL

64+00 RT - 64+90 RT
64+00 LT - 65+22 LT
67+40 RT - 67+91 RT
67+70 LT - 70+10 LT

GUARD RAIL APPROACH SECTION, NETC 2 RAIL

64+40.3 - 64+72.3 RT
64+85.7 - 65+16.3 LT
67+45.7 - 67+76.3 RT
67+89.7 - 68+21.7 LT

MANUFACTURED TERMINAL SECTION (FLARED)

63+98.2 - 64+35.7 LT
69+38.9 - 69+76.9 LT

TEMPORARY 4" YELLOW LINE

64+00 - 70+50 DBL SOLID

TEMPORARY 4" WHITE LINE

64+00 - 70+50 LT
64+00 - 70+50 RT

DURABLE 4" YELLOW LINE

64+00 - 70+50 DBL SOLID

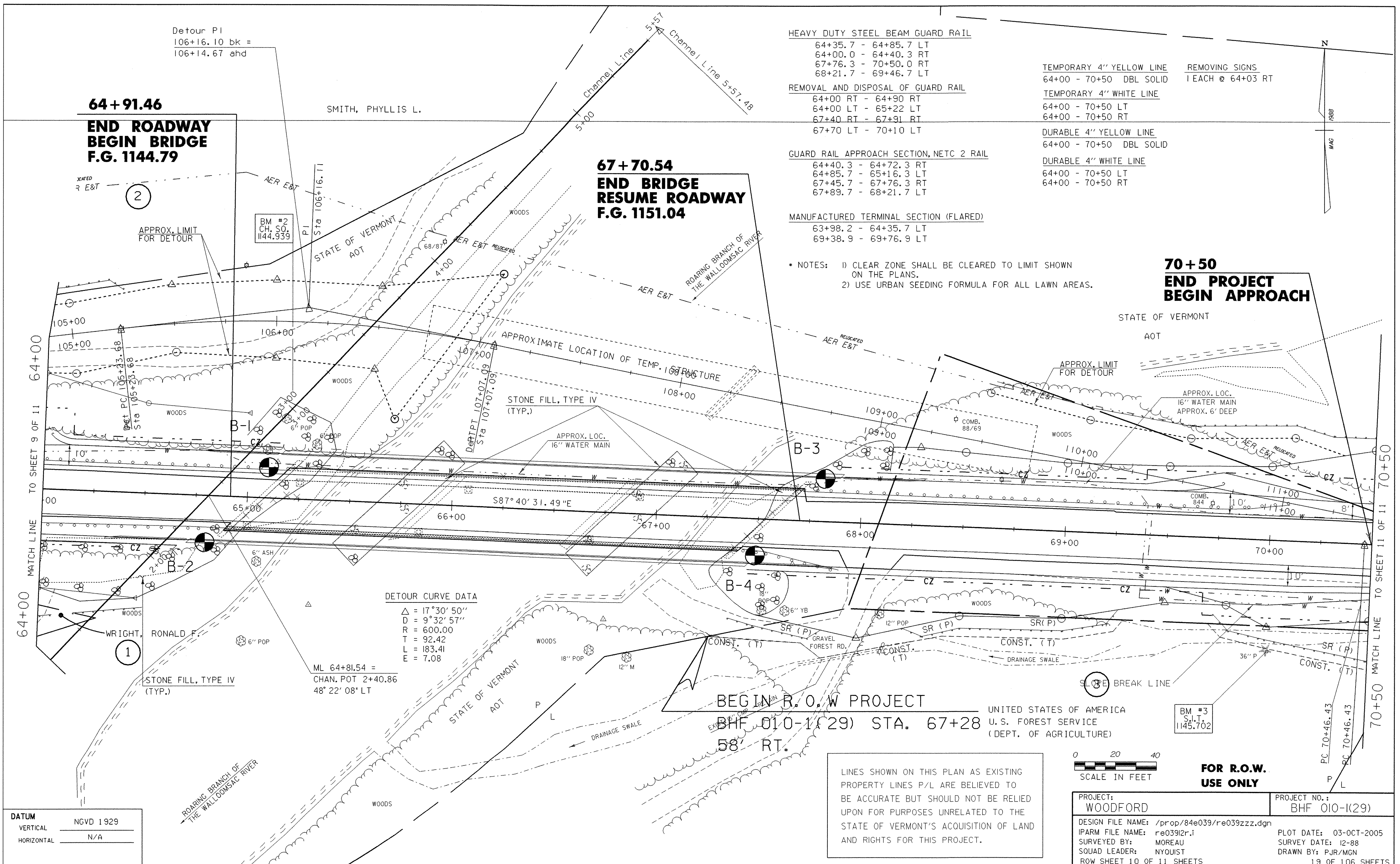
DURABLE 4" WHITE LINE

64+00 - 70+50 LT
64+00 - 70+50 RT

REMOVING SIGNS

1 EACH @ 64+03 RT

- * NOTES: 1) CLEAR ZONE SHALL BE CLEARED TO LIMIT SHOWN ON THE PLANS.
2) USE URBAN SEEDING FORMULA FOR ALL LAWN AREAS.



DETOUR CURVE DATA

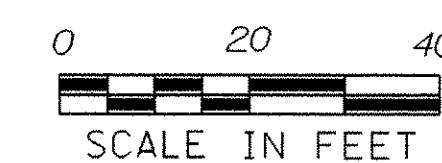
$\Delta = 17^\circ 30' 50''$
 $D = 9^\circ 32' 57''$
 $R = 600.00$
 $T = 92.42$
 $L = 183.41$
 $E = 7.08$

ML 64+81.54 =
CHAN. POT 2+40.86
48° 22' 08" LT

BEGIN R.O.W PROJECT
BHF 010-1(29) STA. 67+28
58' RT.

UNITED STATES OF AMERICA
U. S. FOREST SERVICE
(DEPT. OF AGRICULTURE)

LINES SHOWN ON THIS PLAN AS EXISTING PROPERTY LINES P/L ARE BELIEVED TO BE ACCURATE BUT SHOULD NOT BE RELIED UPON FOR PURPOSES UNRELATED TO THE STATE OF VERMONT'S ACQUISITION OF LAND AND RIGHTS FOR THIS PROJECT.



FOR R.O.W. USE ONLY

DATUM
VERTICAL NGVD 1929
HORIZONTAL N/A

PROJECT: WOODFORD	PROJECT NO. : BHF 010-1(29)
DESIGN FILE NAME: /prop/84e039/re039zzz.dgn	PLOT DATE: 03-OCT-2005
IPARM FILE NAME: re03912r.1	SURVEY DATE: 12-88
SURVEYED BY: MOREAU	DRAWN BY: PJR/MGN
SQUAD LEADER: NYQUIST	ROW SHEET 10 OF 11 SHEETS
	19 OF 106 SHEETS