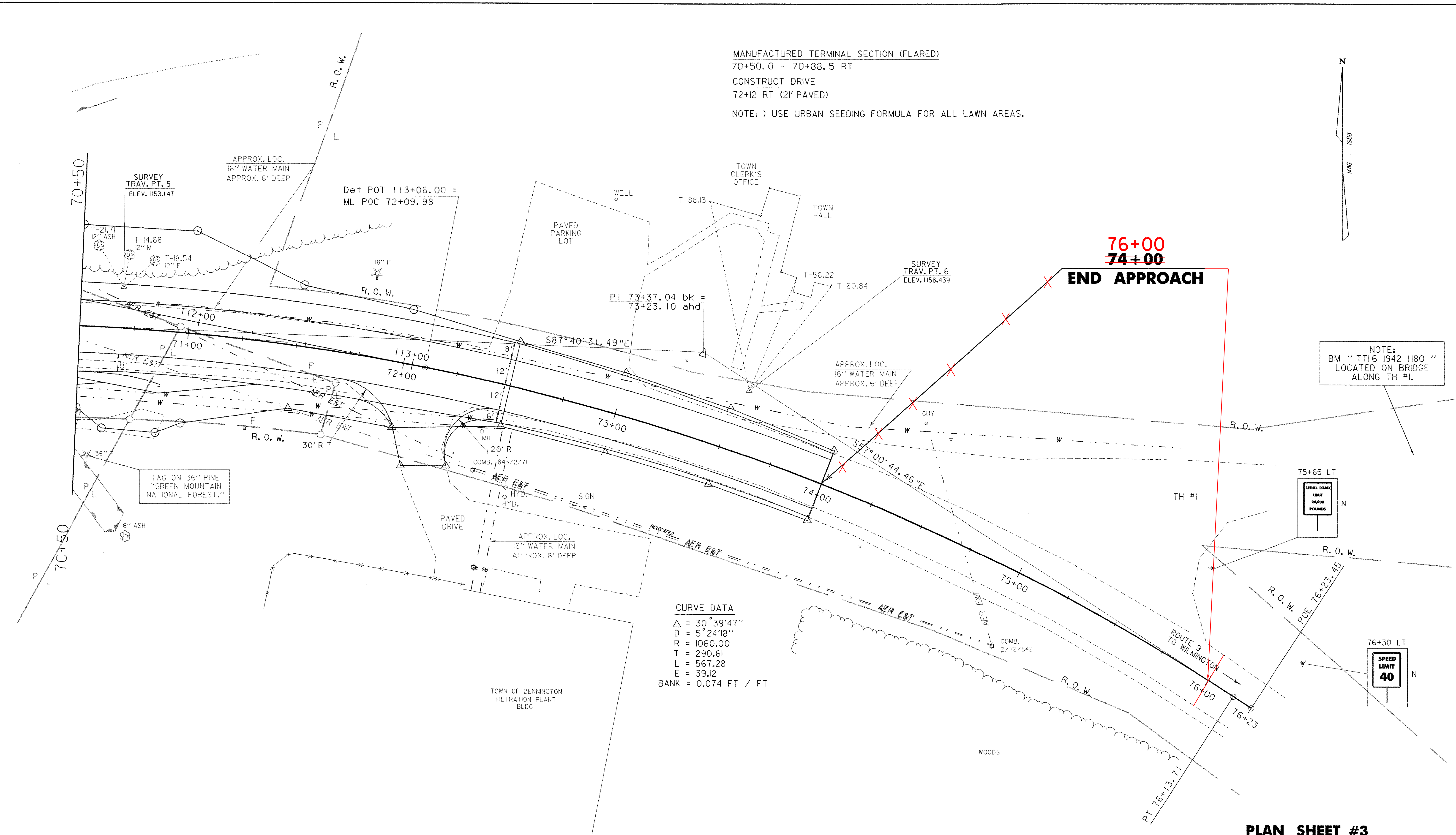
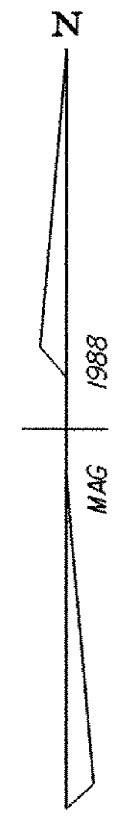


MANUFACTURED TERMINAL SECTION (FLARED)
 70+50.0 - 70+88.5 RT
 CONSTRUCT DRIVE
 72+12 RT (21' PAVED)

NOTE: 1) USE URBAN SEEDING FORMULA FOR ALL LAWN AREAS.



76+00
~~74+00~~
END APPROACH

NOTE:
 BM "TTI6 1942 1180"
 LOCATED ON BRIDGE
 ALONG TH #1.

CURVE DATA
 $\Delta = 30^\circ 39' 47''$
 $D = 5^\circ 24' 18''$
 $R = 1060.00$
 $T = 290.61$
 $L = 567.28$
 $E = 39.12$
 $BANK = 0.074 \text{ FT} / \text{ FT}$

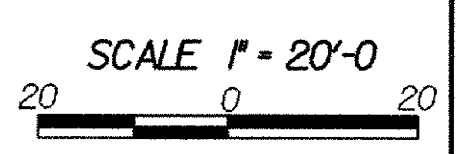
TAG ON 36" PINE
 "GREEN MOUNTAIN
 NATIONAL FOREST."

75+65 LT
 LEGAL LOAD
 LIMIT
 24,000
 POUNDS

76+30 LT
 SPEED
 LIMIT
 40

PLAN SHEET #3

DATUM	
VERTICAL	NGVD 1929
HORIZONTAL	N/A



PROJECT: WOODFORD	PROJECT NO. : BHF 010-1(29)
DESIGN FILE NAME: /84e039/structures/de039mul.dgn	PLOT DATE: 03-OCT-2005
IPARM FILE NAME: de039lo3.i	SURVEY DATE: 12-88
SURVEYED BY: MOREAU	DRAWN BY: EVANS-MONGEON
SQUAD LEADER: PORTALUPI	SHEET: 14 OF 106