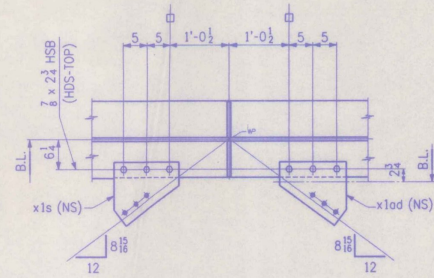
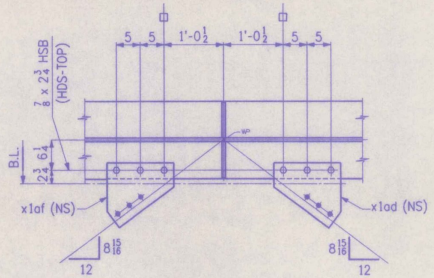


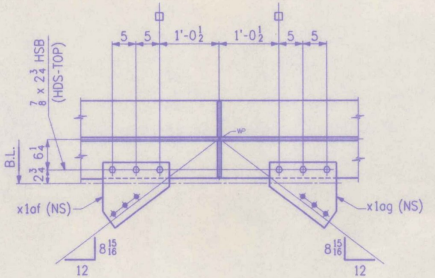
SECT. B1



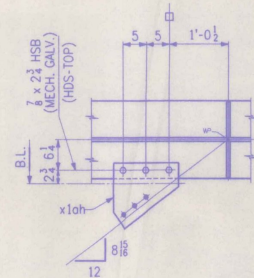
SECT. B2
(DEVELOPED FOR x1d ONLY)



SECT. B3
(DEVELOPED)



SECT. B4
(DEVELOPED)



SECT. B5

BILL OF MATERIAL					
NO.	MARK	DESCRIPTION	LENGTH	REMARKS	ITEM NO.
ONE	GSB	GIRDER			29230
1	a	PL 62 x 3/8	65 6 1/2	(T)	2
1	b	PL 62 x 3/8	42 11 1/2	(T)	4
1	c	PL 16 x 1 1/2	73 0 1/2	(T)	5
1	d	PL 16 x 1 1/2	35 6	(T)	14
1	f	PL 16 x 1 1/2	72 9 1/2	(T)	13
1	g	PL 16 x 1 1/2	35 6	(T)	14
2	x1k	PL 58 x 3/8	1 1	(T)	6
2	x1m	PL 16 x 3/8	2 1	(T)	4
4	x1n	BAR 7 x 3/4	2 1	(T)	2
2	x1b	BAR 7 1/2 x 1/2	5 2		12
10	x1f	BAR 7 1/2 x 1/2	5 2		14
1	x1p	PL 14 x 3/8	1 0 1/2		16
2	x1s	PL 14 x 3/8	1 1 1/2		16
3	x1od	PL 14 x 3/8	1 1 1/2	BENT	16
3	x1of	PL 14 x 3/8	1 1 1/2	BENT	16
1	x1og	PL 14 x 3/8	1 1 1/2	BENT	16
1	x1oh	PL 14 x 3/8	1 1 1/2	BENT	16
30		1/4 # H.S. BOLTS	0 2 1/2		81
30		WASHERS FOR 1/4 # H.S. BOLTS			81
3		1/4 # H.S. BOLTS	0 2 1/2		81
3		WASHERS FOR 1/4 # H.S. BOLTS			81


SHOP DRAWING REVIEW	
REVIEWED FOR GENERAL COMPLIANCE WITH CONTRACT REQUIREMENTS. NO RESPONSIBILITY IS ASSUMED FOR THE CORRECTNESS OF THE SHOP DRAWING DETAILS.	
DESIGNED BY	
CHECKED BY	
APPROVED BY	
DATE	

Barnes and Jarric, Inc.
300 New Haven Street
Rutland, Vermont 05701
Tel: 248-5100

SHOP NOTE
 HOLES: 1/8" (UN)
 BOLTS: AS NOTED
 PAINT: AS NOTED, SEE DWG. N1
 FOR GENERAL SHOP NOTES, SEE DWG. N1.
 FOR WEB CAMBER DIAGRAM, SEE DWG. WC1.

WORK THIS DWG. WITH DWG. 21

NO.	REVISION	DATE

HIGH STEEL STRUCTURES, INC.  1770 Hempstead Road
Lancaster, PA 17605-0008
Phone: 717-298-5211
A Division of High Industries, Inc.

GIRDER **GSB**
 U.S. ROUTE 7 OVER OTTER CREEK
 BRIDGE NO. 79
 TOWN OF WALLINGFORD, COUNTY OF RUTLAND
 STATE OF VERMONT
 AGENCY OF TRANSPORTATION
 PROJECT NO. BRS-0137(13)

STATE CONTRACT OR REF. NO. _____
 CONTRACTOR **J. A. McDONALD, INC.**
 IN CHARGE **abs** BY **ppf** CHECKED BY **LD** DATE: 2-5-96
 CONTRACT NUMBER: **VT-95367** DRAWING NUMBER: **22 OF 24**