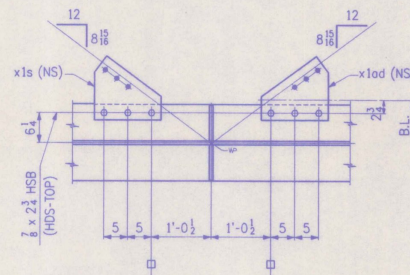
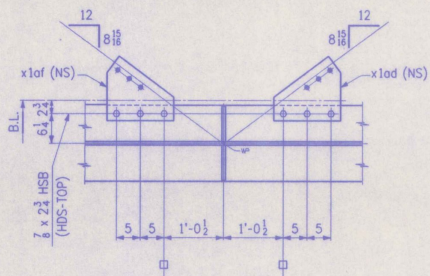


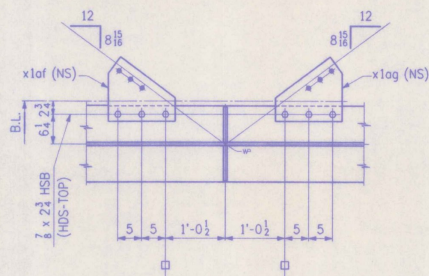
SECT. B1



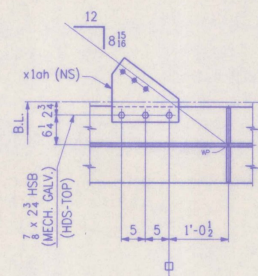
SECT. B2
(DEVELOPED) FOR x1od ONLY



SECT. B3
(DEVELOPED)



SECT. B4
(DEVELOPED)



SECT. B5
(DEVELOPED)

BILL OF MATERIAL					
NO.	MARK	DESCRIPTION	LENGTH	REMARKS	ITEM NO.
ONE	G2B	GIRDER			29215
1	a	PL 62 x 3/8	65 6 1/2	(T)	2 4
1	b	PL 62 x 3/8	42 10 1/4	(T)	2 5
1	c	PL 16 x 1 1/2	72 11 1/2	(T)	2 13
1	d	PL 16 x 1 1/2	35 6	(T)	2 14
1	f	PL 16 x 1 1/2	72 8 1/2	(T)	2 13
1	g	PL 16 x 1 1/2	35 6	(T)	2 14
2	x1k	PL 58 x 3/8	1 1	(T)	3 6
2	x1m	PL 16 x 1 1/2	2 1	(T)	3 4
4	x1n	BAR 7 x 3/4	2 1	(T)	3 2
2	x1b	BAR 7 1/2 x 7/8	5 2		3 12
10	x1f	BAR 7 1/2 x 1 1/2	5 2		3 14
1	x1p	PL 14 x 3/8	1 0 3/8		3 16
2	x1s	PL 14 x 3/8	1 1 1/2		3 16
3	x1od	PL 14 x 3/8	1 1 1/2	BENT	3 16
3	x1of	PL 14 x 3/8	1 1 1/2	BENT	3 16
1	x1og	PL 14 x 3/8	1 1 1/2	BENT	3 16
1	x1oh	PL 14 x 3/8	1 1 1/2	BENT	3 16
30		3/4 # H.S. BOLTS	0 2 1/2		B1 2
30		WASHERS FOR 3/4 # H.S. BOLTS			B1 6
3		3/4 # H.S. BOLTS	0 2 1/2	MECH. GALV.	B1 5
3		WASHERS FOR 3/4 # H.S. BOLTS		MECH. GALV.	B1 5

SHOP DRAWING REVIEW
 REVIEWED FOR GENERAL COMPLIANCE WITH CONTRACT REQUIREMENTS AND RESPONSIBILITY IS ASSIGNED FOR CORRECTNESS OF DIMENSIONS OF DETAILS.

APPROVED: [Signature]
 APPROVED: [Signature]
 APPROVED: [Signature]
 APPROVED: [Signature]

Barnes and Jarvis, Inc.
 80 Westcott Street
 Boston, Massachusetts 02118
 DATE: 12/17/96 BY: JCS

SHOP NOTE
 HOLES: 1/8" Ø (UN)
 BOLTS: AS NOTED
 PAINT: AS NOTED, SEE DWG. N1
 FOR GENERAL SHOP NOTES, SEE DWG. N1.
 FOR WEB CAMBER DIAGRAM, SEE DWG. WC1.

WORK THIS DWG. WITH DWG. 17

NO.	REVISION	DATE

HIGH STEEL STRUCTURES, INC. 1770 Hempstead Road
 Lancaster, PA 17603-0008
 Phone 717/299-5211
 A Division of High Industries, Inc.

GIRDER G2B
 U.S. ROUTE 7 OVER OTTER CREEK
 BRIDGE NO. 79
 TOWN OF WALLINGFORD, COUNTY OF RUTLAND
 STATE OF VERMONT
 AGENCY OF TRANSPORTATION
 PROJECT NO. BRS-0137(13)
 STATE CONTRACT NO. BRS-0137(13)
 CONTRACTOR: J. A. McDONALD, INC.
 IN CHARGE: abs MADE PPP-2-2 CHKD LD DATE: 2-3-96
 CONTRACT NUMBER: VT-95367 BY: [Signature] DRAWING NUMBER: 18 OF 24