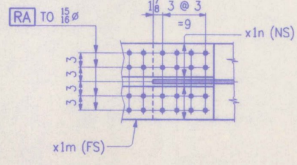
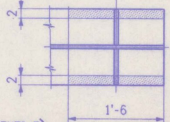


GIRDER ~ MK. G2B

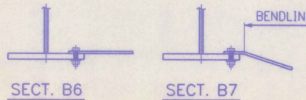


PAINT LIGHT RUST PREVENTIVE
COAT OF PRIMER (FS),
EDGES & SHADED AREA (NS)



SHOP DRAWING REVIEW

REVIEW FOR GENERAL COMPLIANCE WITH CONTRACT DOCUMENTS. CONTRACTOR ASSUMES RESPONSIBILITY FOR ACCURACY AND COMPLETENESS OF SHOP DRAWINGS. CONTRACTOR OBTAIN ALL NECESSARY PERMITS AND APPROVALS FROM ALL AGENCIES INVOLVED. APPROVED FOR CONTRACTOR: *[Signature]* APPROVED FOR ENGINEER: *[Signature]* Barnes and Jerns, Inc. 60 Brimley Street, Burlington, Vermont 05401 DATE: 12/11/16



WORK THIS DWG. WITH DWG. 18

NO.	REVISION	DATE

HIGH STEEL STRUCTURES, INC. 1770 Hempstead Road Lancaster, PA 17605-0008 Phone 717/299-5211

GIRDER G2B

U.S. ROUTE 7 OVER OTHER CREEK

BRIDGE NO. 79

TOWN OF WALLINGFORD, COUNTY OF RUTLAND

STATE OF VERMONT

AGENCY OF TRANSPORTATION

PROJECT NO. BRS-0137(13)

CONTRACTOR: J. A. McDONALD, INC.

IN CHARGE: *abs* MADE PPF 2-2 CH'D BY: LD DATE: 2-3-96

CONTRACT NUMBER: VT-95367 DRAWING NUMBER: 17 OF 24

CODE: 30