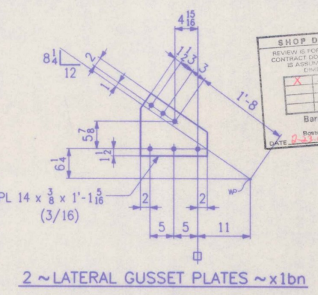


LATERAL GUSSET PLATES

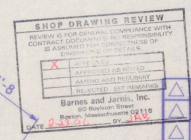
MARK	No. REQ'D	(W)	(H)	(V)	LEN1	(B)
x1p	2	8 1/4	5 3/8	2 1/8	1'-0 5/8	FLAT
x1s	4	8 1/8	4 1/8	2 3/4	1'-1 1/2	FLAT
x1t	4	8 1/8	4 1/8	2 3/4	1'-1 1/2	3/8
x1w	4	8 1/8	4 1/8	2 3/4	1'-1 1/2	3/8
x1y	4	8 1/8	4 1/8	2 3/4	1'-1 1/2	3/8
x1aa	4	8 1/8	4 1/8	2 3/4	1'-1 1/2	3/8
x1ab	4	8 1/8	4 1/8	2 3/4	1'-1 1/2	1/4
x1ac	4	8 1/8	4 1/8	2 3/4	1'-1 1/2	3/8
x1ad	6	8 1/8	4 1/8	2 3/4	1'-1 1/2	3/8
x1af	6	8 1/8	4 1/8	2 3/4	1'-1 1/2	3/8
x1ag	2	8 1/8	4 1/8	2 3/4	1'-1 1/2	5/8
x1ah	2	9 5/8	4 1/2	3 3/8	1'-2 1/4	FLAT
x1ak	2	9 5/8	4 1/2	3 3/8	1'-2 1/4	FLAT
x1am	2	10 1/8	4 1/2	3 3/8	1'-2 1/8	1/8
x1an	2	10 1/8	4 1/2	3 3/8	1'-2 1/8	1/8

LATERAL GUSSET PLATES

MARK	No. REQ'D	(W)	(H)	(V)	LEN2	(B)
x1op	4	8 1/8	4 3/8	3 1/8	1'-1 1/2	FLAT
x1os	4	8 1/8	4 3/8	3 1/8	1'-1 1/2	3/8
x1ot	4	8 1/8	4 3/8	3 1/8	1'-1 1/2	3/8
x1ow	4	8 1/8	4 3/8	3 1/8	1'-1 1/2	3/8
x1oy	4	8 1/8	4 3/8	3 1/8	1'-1 1/2	3/8
x1ba	4	8 1/8	4 3/8	3 1/8	1'-1 1/2	1/4
x1bb	4	8 1/8	4 3/8	3 1/8	1'-1 1/2	1/4
x1bc	6	8 1/8	4 3/8	3 1/8	1'-1 1/2	3/8
x1bd	6	8 1/8	4 3/8	3 1/8	1'-1 1/2	3/8
x1bf	2	8 1/8	4 3/8	3 1/8	1'-1 1/2	5/8
x1bg	2	9 5/8	4 1/8	3 1/8	1'-2 1/4	FLAT
x1bh	2	9 5/8	4 1/8	3 1/8	1'-2 1/4	FLAT
x1bk	2	10 3/8	3 3/8	4 1/8	1'-2 1/8	1/8
x1bm	2	10 3/8	3 3/8	4 1/8	1'-2 1/8	1/8



SHOP NOTE
 HOLES: 1/8" (UN)
 BOLTS: NONE
 PAINT: NONE
 FOR GENERAL SHOP NOTES, SEE DWG. N1.



NO.	REVISION	DATE

HIGH STEEL STRUCTURES, INC.
 1770 Hampstead Road
 Lancaster, PA 17603-0008
 Phone 717/299-5211
 A Division of High Industries, Inc.

CIRDER JOB STANDARDS
 U.S. ROUTE 7 OVER OTTER CREEK
 BRIDGE NO. 79
 TOWN OF WALLINGFORD, COUNTY OF RUTLAND
 STATE OF VERMONT
 AGENCY OF TRANSPORTATION
 PROJECT NO. BR5-0137(13)

CONTRACTOR: **J. A. McDONALD, INC.**
 IN CHARGE: **abs** MADE **PPP 1-25** CHECKED **LD** DATE: 2-1-95
 CONTRACT NUMBER: **VT-95367** DRAWING NUMBER: **X1**