

FIELD BOLT SUMMARY
(4% ADDITIONAL BOLTS ADDED)

ASTM A325 TYPE 3 BOLTS WITH HVY. HEX HEAD AND ASTM A563 GRADE DH3 HVY. HEX NUT
400 - 7/8" Ø HIGH STRENGTH BOLTS x 0'-3 1/2"
275 - 7/8" Ø HIGH STRENGTH BOLTS x 0'-3
167 - 7/8" Ø HIGH STRENGTH BOLTS x 0'-2 1/2"
1602 - 7/8" Ø HIGH STRENGTH BOLTS x 0'-2 1/4"
300 - 7/8" Ø HIGH STRENGTH BOLTS x 0'-2"
2744 ROUND, FLAT F436 W WASH. FOR 7/8" Ø H.S. BOLTS

(RCT)

FIELD BOLT SUMMARY
(4% ADDITIONAL BOLTS ADDED)

ASTM A325 TYPE 1 BOLTS WITH HVY. HEX HEAD AND ASTM A563 GRADE DH HVY. HEX NUT (MECH. GALV. B-695 CLASS 50)
335 - 7/8" Ø HIGH STRENGTH BOLTS x 0'-2 1/2"
25 - 7/8" Ø HIGH STRENGTH BOLTS x 0'-2"
360 ROUND, FLAT F436 (GALV.) WASH. FOR 7/8" Ø H.S. BOLTS

(RCT)
(GALV.)

NOTES:

NO CREDIT WILL BE ALLOWED FOR WORK PERFORMED BY OTHERS IN REPLACING OR CORRECTING MATERIALS OR WORKMANSHIP COVERED BY THIS DRAWING UNLESS EXPRESSLY AUTHORIZED BY HIGH STEEL STRUCTURES, INC.

FIELD CONNECTIONS TO BE MADE WITH 7/8" Ø HIGH STRENGTH (A325, TYPE 3) OR 7/8" Ø (A325, TYPE 1-GALV.) BOLTS. ALL DIMENSIONS ARE GIVEN HORIZONTALLY (UN).

HIGH STEEL STRUCTURES, INC. DOES NOT SUPPLY STUD SHEAR CONNECTORS, EXP. DAM MATERIAL, FIELD TOUCH UP PAINT OR PAINTING, OR FIELD CLEANING. WORK THIS DRAWING WITH DRAWING SA1. FOR BEARINGS SEE SHEET E1.

NOTICE: WEIGHTS OF MEMBERS LISTED ON THESE DRAWINGS ARE ESTIMATED WEIGHTS AND ACTUAL WEIGHTS WILL VARY. HIGH STEEL STRUCTURES, INC. WILL NOT BE RESPONSIBLE FOR ANY ERECTION PROCEDURES, SHIPPING PROCEDURES, ETC. DEVELOPED USING ESTIMATED WEIGHTS AS SHOWN.

ERECTOR NOTE: ELEVATIONS AND/OR CAMBER CHECKS OF FIELD SPLICES MUST BE COMPLETED PRIOR TO FINAL BOLTING. HIGH STEEL STRUCTURES IS TO BE NOTIFIED AND CONSULTED, PRIOR TO FINAL BOLTING, IF SPLICE ELEVATIONS ARE NOT WITHIN ACCEPTABLE TOLERANCE. THE CORRECTION OF ANY UNACCEPTABLE SPLICES AFTER FINAL BOLTING WILL BE AT NO COST TO HIGH STEEL STRUCTURES.

NOTICE TO ERECTOR & CONTRACTOR: A PORTION OF THIS STRUCTURAL STEEL (10'-0" FROM ABUTS.) IS BEING DELIVERED WITH THE FINAL FINISH COAT APPLIED. YOUR SPECIAL ATTENTION REQUIRES EXTREME CARE AND APPROPRIATE EQUIPMENT FOR HANDLING DURING ERECTION AND SUBSEQUENT FIELD OPERATIONS. HIGH STEEL STRUCTURES, INC. WILL NOT BE RESPONSIBLE FOR ANY TOUCH-UP REQUIRED DUE TO YOUR FAILURE TO PROPERLY PROTECT FINISH PAINT.

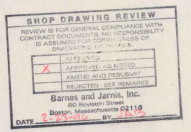
ALL FIELD BOLTS THRU BOTTOM FLANGE ARE TO HAVE HEADS UP. ALL FIELD BOLTS THRU WEB OF FASCIA GIRDERS ARE TO HAVE HEADS ON OUTSIDE OF WEB.

"RCT" INDICATES ROTATIONAL CAPACITY TESTED BOLTS. DO NOT MIX NUTS, BOLTS AND WASHERS FROM DIFFERENT CONTAINERS UNLESS ALL NUTS, BOLTS AND WASHERS HAVE THE SAME LOT NUMBER.

ERECTOR NOTE: ALL BOLTS MUST BE LOCATED IN ACCORDANCE WITH THIS LIST OF FIELD CONNECTIONS. HIGH STEEL STRUCTURES WILL NOT BE RESPONSIBLE FOR FURNISHING ADDITIONAL BOLTS OR FOR ANY OTHER RELATED COSTS OR DAMAGES RESULTING FROM IMPROPER LOCATION OF BOLTS.

LIST OF FIELD CONNECTIONS

LINE	ACTUAL NO. REQ'D	BOLT SIZE	BOLT LENGTH (CONC. CONNS)	BOLTS	# OF BRIP	THICKNESS OF PCS CONNECTED	PIECES CONNECTED AND REMARKS
1	192	7/8"	3 1/2"	32	6	2 1/2"	FS#1 (TOP FLG.) (RCT)
2	192	7/8"	3 1/2"	32	6	2 1/2"	FS#1 (BOIT FLG.)
3	264	7/8"	3"	44	6	1 3/4"	FS#1 (WEB)
4							
5	1540	7/8"	2 1/2"	28	55	7/8"	INT. CFS TO GIRDER
6	160	7/8"	2 1/2"	32	5	1 1/2"	PIER CFS TO GIRDER
7	320	7/8"	2 1/2"	32	10	1 1/2"	END CFS TO GIRDER (GALV.)
8							
9	288	7/8"	2"	6	48	3/8"	LATERAL BRACING TO GUSSET PL
10	24	7/8"	2"	6	4	3/8"	LATERAL BRACING TO GUSSET PL ADJACENT TO ABUTS. (GALV.)
11							
12							
13							
14							
15							
16							
17							
18							
19							
20							



NO.	REVISION	DATE
HIGH STEEL STRUCTURES, INC. 1730 Harnwood Road Lancaster, PA 17605-0008 Phone 717/298-5211 A Division of High Industries, Inc.		
ERECTION PLAN		
U.S. ROUTE 7 OVER OTTER CREEK		
BRIDGE NO. 79		
TOWN OF WALLINGFORD, COUNTY OF RUTLAND		
STATE OF VERMONT		
AGENCY OF TRANSPORTATION		
PROJECT NO. BRS-0137(13)		
CONTRACTOR	J. A. McDONALD, INC.	
IN CHARGE	abs	MADE PPP 1:22 CHKD BY: DATE: 2-5-96
CONTRACT NUMBER	VT-95367	DRAWING NUMBER E2