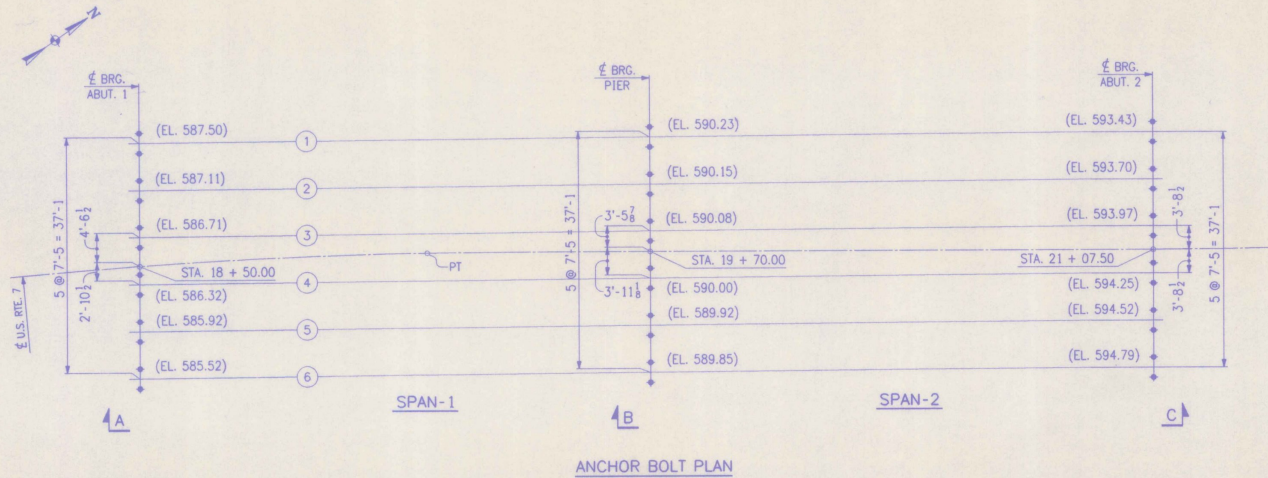
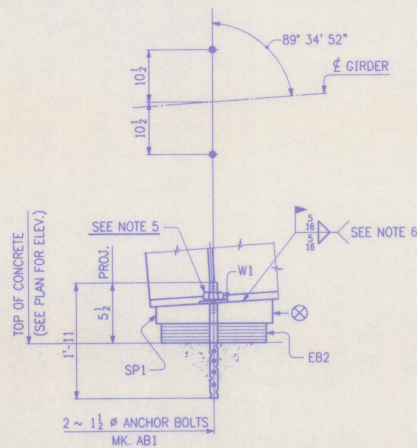


FED. ROAD DIST. NO.	STATE	FED. AID PROJ. NO.
	VT	

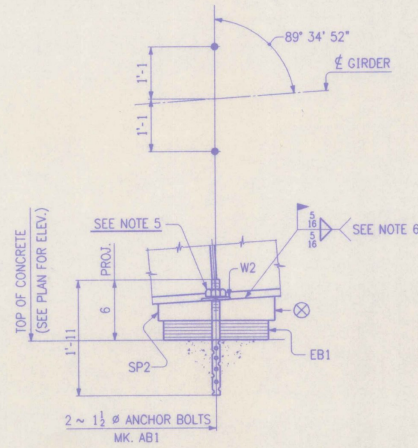


ANCHOR BOLT PLAN

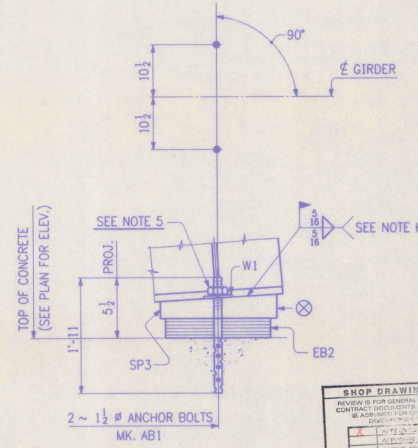
- NOTES:
1. ALL DIMENSIONS ARE GIVEN HORIZONTALLY.
 2. ELEVATIONS ARE GIVEN TO TOP OF CONCRETE PAD.
 3. ANCHOR BOLT SETTINGS MUST BE EXACT IN EVERY DETAIL IN ACCORDANCE WITH THIS DRAWING.
 4. ANCHOR BOLTS ARE FURNISHED BY HIGH STEEL STRUCTURES, INC., AND SET BY OTHERS.
 5. BACK NUT OFF 1/4" FROM FINGER TIGHT AND BURR THE THREADS.
 6. AREAS OF GALVANIZING DAMAGED BY FIELD WELDING SHALL BE PAINTED WITH AN APPROVED SEALER IN ACCORDANCE WITH SUBSECTION 708.02(4).
 7. ⊗ DENOTES THICK EDGE OF SOLE PLATE.



SECT. A
(TYP. @ ABUT. 1)



SECT. B
(TYP. @ PIER)



SECT. C
(TYP. @ ABUT. 2)


SHOP DRAWING REVIEW

REVIEWED FOR GENERAL COMPLIANCE WITH CONTRACT DOCUMENTS. NO RESPONSIBILITY FOR DETAILS OR CONSTRUCTION OF DRAWING IS ASSUMED.

DATE: 1-31-96

Barnes and Jettis, Inc.
80 Belmont Street
Boston, Massachusetts 02118

NO.	REVISION	DATE

HIGH STEEL STRUCTURES, INC.  1770 Hempstead Road
Lancaster, PA 17603-0008
Phone 717/298-5211
A Division of High Industries, Inc.

ANCHOR BOLT PLAN

U.S. ROUTE 7 OVER OTTER CREEK

BRIDGE NO. 79

TOWN OF WALLINGFORD, COUNTY OF RUTLAND

STATE OF VERMONT

AGENCY OF TRANSPORTATION

STATE CONTRACT OR REF. NO. PROJECT NO. BRS-0137(13)

CONTRACTOR J. A. McDONALD, INC.

IN CHARGE: *abs* MADE BY: *JCC* CHK'D BY: # DATE: 1-31-96

CONTRACT NUMBER: VT-95367 DRAWING NUMBER: E1