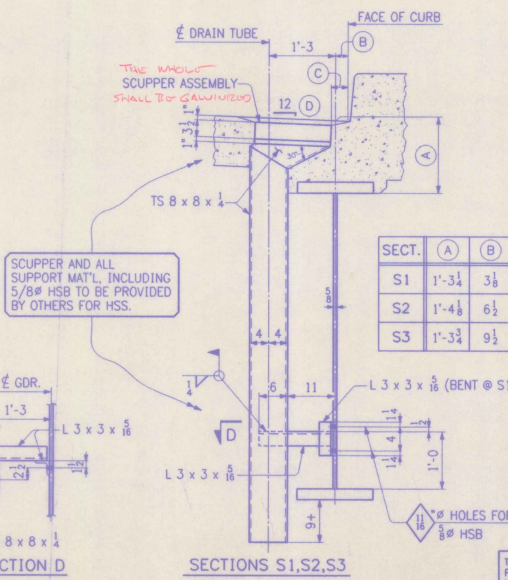


LINE	BLA	AL	AR	BLB
1	150'-0 ³ / ₁₆	119'-11 ¹ / ₁₆	30'-0 ⁵ / ₁₆	107'-5 ⁷ / ₁₆
2	150'-0 ³ / ₁₆	120'-0	30'-0 ⁵ / ₁₆	107'-5 ¹⁹ / ₁₆
3	150'-0 ¹ / ₁₆	120'-0 ¹ / ₁₆	30'-0 ³ / ₁₆	107'-6
4	150'-0 ¹ / ₁₆	120'-0 ¹ / ₁₆	30'-0 ³ / ₁₆	107'-6 ¹ / ₁₆
5	150'-0 ³ / ₁₆	120'-0 ³ / ₁₆	30'-0 ⁷ / ₁₆	107'-6 ¹ / ₁₆
6	150'-0 ¹⁹ / ₁₆	120'-0 ¹ / ₁₆	30'-0 ⁷ / ₁₆	107'-6 ¹ / ₁₆



SECT.	(A)	(B)	(C)	(D)
S1	1'-3 ¹ / ₄	3 ¹ / ₂	4	.0390
S2	1'-4 ¹ / ₈	6 ¹ / ₂	6	.0120
S3	1'-3 ³ / ₄	9 ¹ / ₂	6	.0140

- NOTES:**
- ALL LONGITUDINAL DIMS. ARE SLOPING ALONG BOT. OF WEB IN "CAMBERED" POSITION.
 - TRANSVERSE DIMS. ARE HORIZONTAL.
 - DENOTES DROP (FINAL), ARROW POINTS TO LOW END.
 - ALL BRG. STIFFS. ARE VERTICAL.
 - INT. CONN. PLATES ARE NORMAL TO BOTTOM FLG.
 - FOR LAYOUTS SEE DWG. WS2.

SHOP DRAWING REVIEW

REVIEWED BY: _____
 CONTRACT NO. _____
 PROJECT NO. _____
 DATE: 4-26-96 BY: JAC

THIS IS A WORK (W) DRAWING. ITS FUNCTION IS TO PROVIDE BASIC DIMENSIONS AND CONCEPTS FOR USE IN THE PREPARATION OF THE SHOP DETAILS. IT IS NOT INTENDED TO BE USED FOR ERECTION OR FABRICATION.

NO.	REVISION	DATE

HIGH STEEL STRUCTURES, INC. 1770 Hempstead Road
 Lancaster, PA 17603-0008
 Phone 717/298-5211
 A Division of High Industries, Inc.

WORKSHEET - CALC. PLAN
 U.S. ROUTE 7 OVER OTTER CREEK
 BRIDGE NO. 79
 TOWN OF WALLINGFORD, COUNTY OF RUTLAND
 STATE OF VERMONT
 AGENCY OF TRANSPORTATION
 PROJECT NO. BRS-0137(13)
 CONTRACTOR: J. A. McDONALD, INC.
 IN CHARGE: abs MAKE: LD DATE: 1-6-96
 CONTRACT NO. VT-95367 DRAWING NO. WS1