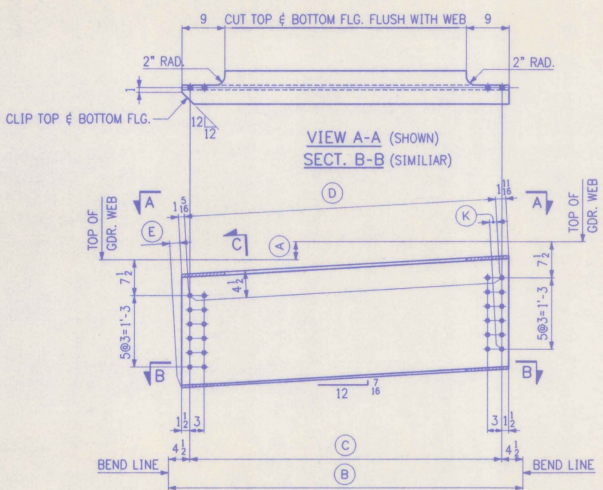


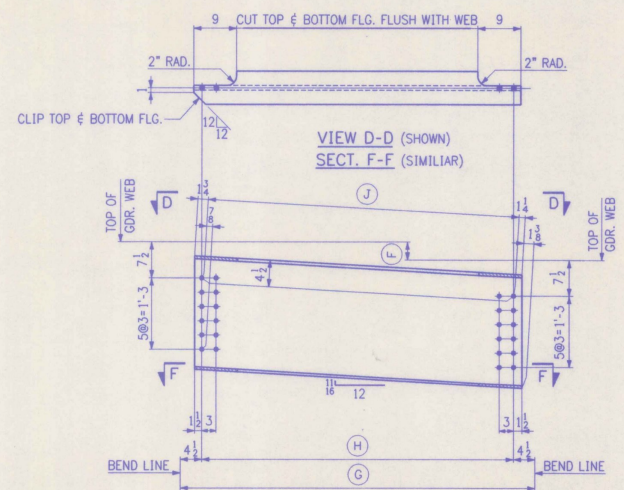
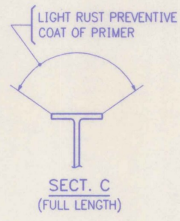
BILL OF MATERIAL					
NO.	MARK	DESCRIPTION	LENGTH	REMARKS	ITEM
DIAPHRAGMS					
1	D26	W24 x 62	13 11 1/2		3 12 867
1	D27	W24 x 62	13 11 1/2		3 12 868
1	D28	W24 x 62	14 0 1/2		3 12 869
1	D29	W24 x 62	14 0 1/2		3 12 870
1	D30	W24 x 62	14 0 1/2		3 12 871
1	D31	W24 x 62	13 3 1/2		3 12 826
1	D32	W24 x 62	13 4		3 12 827
1	D33	W24 x 62	13 4 1/2		3 12 827
1	D34	W24 x 62	13 4 1/2		3 12 828
1	D35	W24 x 62	13 4 1/2		3 12 828



ABUTMENT DIAPHRAGMS

MARK	(A)	(B)	(C)	(D)	(E)	(K)
D26	5 1/2	14'-4 1/8	13'-7 1/8	13'-7 1/8	13 1/8	1/2
D27	5 1/2	14'-5	13'-8	13'-8 1/2	13 1/8	1/2
D28	5 1/2	14'-5 3/8	13'-8 3/8	13'-8 3/8	13 1/8	1/2
D29	5 1/2	14'-5 3/8	13'-8 3/8	13'-8 1/2	13 1/8	1/2
D30	5 1/2	14'-5 1/2	13'-8 1/2	13'-8 5/8	7 8	3/16

PAINT



ABUTMENT DIAPHRAGMS

MARK	(F)	(G)	(H)	(J)
D31	9	13'-8 1/4	12'-11 1/4	12'-11 1/2
D32	9	13'-8 3/8	12'-11 3/8	12'-11 3/8
D33	9	13'-8 1/2	12'-11 1/2	12'-11 3/4
D34	9 1/2	13'-8 3/8	12'-11 3/8	12'-11 1/2
D35	9 1/2	13'-8 1/2	12'-11 1/2	12'-11 1/8

SHOP NOTE

HOLES: 1/8"  
 BOLTS: NONE  
 PAINT: AS NOTED. SEE DWG. N1.  
 FOR GENERAL SHOP NOTES, SEE DWG. N1.

SHOP DRAWING REVIEW  
 REVIEWED FOR COMPLIANCE WITH  
 CONTRACT REQUIREMENTS AND ALL APPLICABLE  
 REGULATIONS AND CODES  
 DATE: 2-11-11 BY: JAB

NO.	REVISION	DATE

HIGH STEEL STRUCTURES, INC. 1770 Hempstead Road  
 Lancaster, PA 17605-0008  
 Phone 717/298-5211  
 A Division of High Industries, Inc.

DIAPHRAGMS  
 U.S. ROUTE 7 OVER RAILROAD  
 BRIDGE NO. 80  
 TOWN OF WALLINGFORD, COUNTY OF RUTLAND  
 STATE OF VERMONT  
 AGENCY OF TRANSPORTATION  
 PROJECT NO. BRS-0137(13)

STATE CONTRACT OR REF. NO. \_\_\_\_\_  
 CONTRACTOR J. A. McDONALD, INC.  
 IN CHARGE: JCS MADE BY: JCC CHK'D BY: FM DATE: 2-21-96  
 CONTRACT NUMBER: VT-95368 DRAWING NUMBER: 3 OF 9