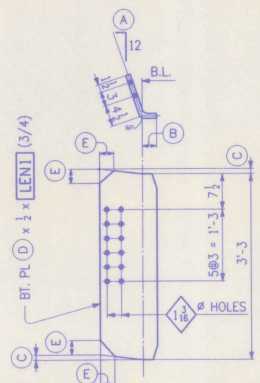
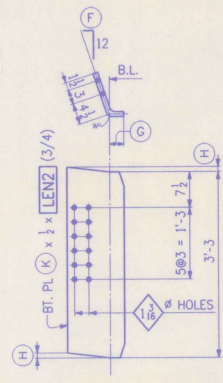


24 ~ BRG. STIFF. MK. x10



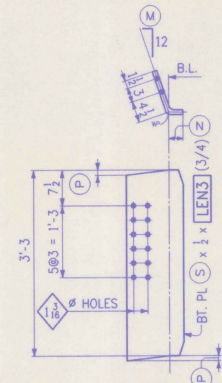
BENT CONN. PL.

MARK	No. REQ'D	(A)	(B)	(C)	(D)	(E)	[LEN1]
x1b	1	5 9/16	2 13/16	1/8	39 1/8	3 1/2	11 1/2
x1c	1	5 1/4	3	1/8	39 1/8	3	1'-0
x1d	1	6	3 1/8	1/8	39 1/8	2 3/4	1'-0 1/8
x1f	1	6 1/4	3 1/4	1/8	39 1/8	2 3/4	1'-0 1/4
x1g	1	6 1/2	3 3/8	0	39	2 3/4	1'-0 3/8
x1s	1	7 1/8	4 1/8	1/8	39 1/8	2	1'-1 1/8



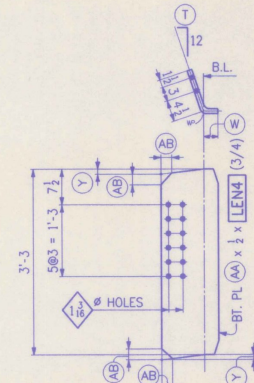
BENT CONN. PL.

MARK	No. REQ'D	(F)	(G)	(H)	(K)	[LEN2]
x1k	1	6 1/8	3 3/8	1/8	39 1/8	1'-0 3/8
x1m	1	7 3/8	3 3/4	1/8	39 1/8	1'-0 1/2
x1n	1	7 1/8	3 1/4	1/8	39 1/8	1'-0 1/4
x1p	1	7 1/8	4 1/8	1/8	39 1/8	1'-1 1/8



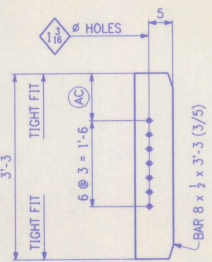
BENT CONN. PL.

MARK	No. REQ'D	(M)	(N)	(P)	(S)	[LEN3]
x1bc	1	5 3/4	3	1/8	39 1/8	1'-0
x1bd	1	6	3 1/8	1/8	39 1/8	1'-0 1/8
x1bf	1	6 1/4	3 1/4	1/8	39 1/8	1'-0 1/4
x1bg	1	6 1/2	3 3/8	0	39	1'-0 3/8
x1bh	1	6 3/4	3 1/2	0	39	1'-0 1/2



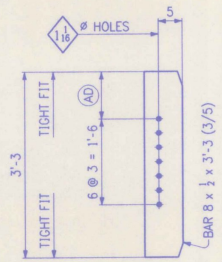
BENT CONN. PL.

MARK	No. REQ'D	(T)	(W)	(Y)	(AA)	[LEN4]
x1bm	1	7 1/8	3 3/4	1/8	39 1/8	2 3/4 1'-0 3/4
x1bn	1	7 7/8	3 7/8	1/8	39 1/8	2 1/4 1'-0 7/8
x1bp	1	7 1/8	4 1/8	1/8	39 1/8	2 1/4 1'-1 1/8
x1bs	1	7 1/8	4 3/8	1/8	39 1/8	2 1/4 1'-1 3/8
x1bt	1	8 1/4	4 1/8	1/8	39 1/8	2 1/4 1'-1 1/8



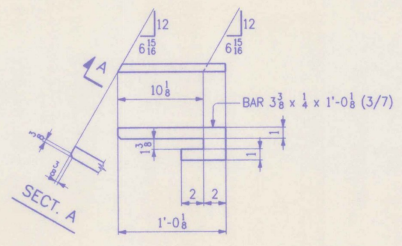
CONN. PL.

MARK	No. REQ'D	(AC)
x1w	10	7
x1oa	3	10 3/4
x1ob	2	11
x1og	2	1'-2
x1oh	1	1'-2 1/4
x1ok	2	1'-2 3/8



CONN. PL.

MARK	No. REQ'D	(AD)
x1y	15	7
x1oc	5	11 1/2
x1od	5	1'-0 1/2
x1of	5	1'-1 1/2



1 EA. ~ DRIP PLATE MK. x10m^R

SHOP DRAWING REVIEW
 REVIEWED BY: [Signature]
 CHECKED BY: [Signature]
 DATE: 2-1-96

NO.	REVISION	DATE

HIGH STEEL STRUCTURES, INC.
 1770 Hempstead Road
 Lancaster, PA 17605-0008
 Phone 717-299-5211

GIRDER JOB STANDARDS
 U.S. ROUTE 7 OVER RAILROAD
 BRIDGE NO. 80
 TOWN OF WALLINGFORD, COUNTY OF RUTLAND
 STATE OF VERMONT
 AGENCY OF TRANSPORTATION
 PROJECT NO. BRS-0137(13)

CONTRACTOR: J. A. McDONALD, INC.
 IN CHARGE: abs MADE: ppp CHECKED: FM DATE: 2-19-96
 CONTRACT NUMBER: VT-95368 DRAWING NUMBER: X1

SHOP NOTE
 HOLES: AS NOTED
 BOLTS: NONE
 PAINT: NONE
 FOR GENERAL SHOP NOTES, SEE DWG. N1.