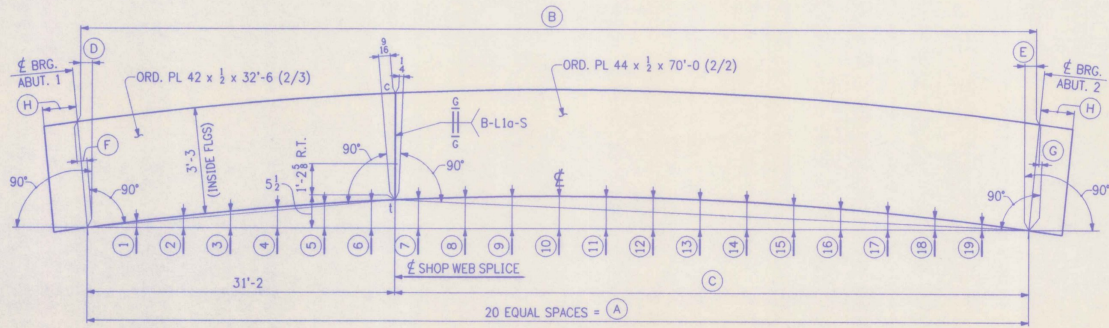
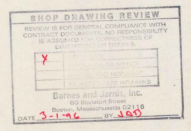


CAMBER DIAGRAM FOR G1A



CAMBER DIAGRAM FOR G2A THRU G6A

MARK	(A)	(B)	(C)	(D)	(E)	(F)	(G)	(H)	(1)	(2)	(3)	(4)	(5)	(6)	(7)	(8)	(9)	(10)	(11)	(12)	(13)	(14)	(15)	(16)	(17)	(18)	(19)	
G2A	99'-10 7/16	99'-11 1/8	68'-8 7/16	1 1/8	0	8/16	1/4	1'-0																				
G3A	99'-10 1/16	99'-11 1/8	68'-8 1/16	1 1/8	0	1/2	1/4	1'-0 1/4	1 1/8	2 1/8	3 1/8	4	4 3/8	5 7/8	5 1/2	6 5/8	6 5/8	6 5/8	6 5/8	6 5/8	6	5 7/8	4 1/2	4 1/8	3 1/8	2 3/8	1 1/8	
G4A	99'-9 1/16	99'-11	68'-7 1/16	1"	1/8	7/16	3/8	1'-0 1/4																				
G5A	99'-10 1/8	99'-11 1/4	68'-8 1/8	1"	1/8	7/16	3/8	1'-0 1/4																				
G6A	99'-10 3/8	99'-11 1/4	68'-8 3/8	1 1/8	1/8	3/8	1/2	1'-0	1 1/8	2 1/8	3	3 1/2	4 9/8	5 3/8	5 1/8	6 1/8	6 1/4	6 1/8	6 1/4	6	5 1/8	5 3/8	4 9/8	3 1/2	2 1/2	2	1 1/8	



- NOTES:
- FOR GENERAL SHOP NOTES SEE DRAWING N1.
  - THE LETTERS "T" & "C" AT WEB SPLICES INDICATE TENSION AND COMPRESSION REGIONS OF SPLICES RESPECTIVELY.
  - R.T. DEPTH ON WEB PLATE SPLICES INCLUDES 1/6 OF THE WEB DEPTH PLUS 25% OF THE REMAINDER TO BE RADIOGRAPHICALLY TESTED.
  - ALL WEB PLATES REQUIRE CHARTY V-NOTCH TEST.

NO.	REVISION	DATE
<p>HIGH STEEL STRUCTURES, INC.  1770 Hempstead Road Lancaster, PA 17608-0008 Phone 717/298-5211 A Division of High Industries, Inc.</p>		
<p>WEB CAMBER DIAGRAMS U.S. ROUTE 7 OVER RAILROAD BRIDGE NO. 50 TOWN OF WALLINGFORD, COUNTY OF RUTLAND STATE OF VERMONT AGENCY OF TRANSPORTATION</p>		
<p>STATE CONTRACT OR REF. NO. PROJECT NO. BRS-0137(13)</p>		
<p>CONTRACTOR J. A. McDONALD, INC.</p>		
<p>IN CHARGE <i>abs</i> MAKE BY: LD 1-20 CHK'D BY: DATE: 1-30-96</p>		
<p>CONTRACT NUMBER: VT-95368 DRAWING NUMBER: WC1</p>		