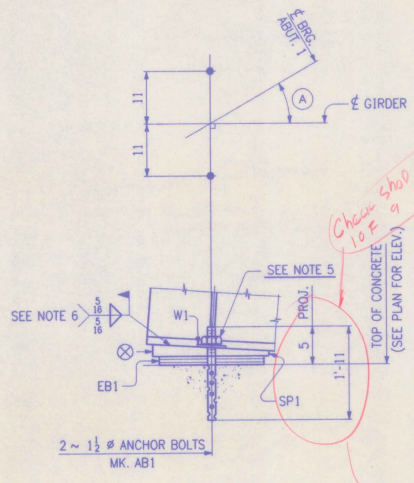
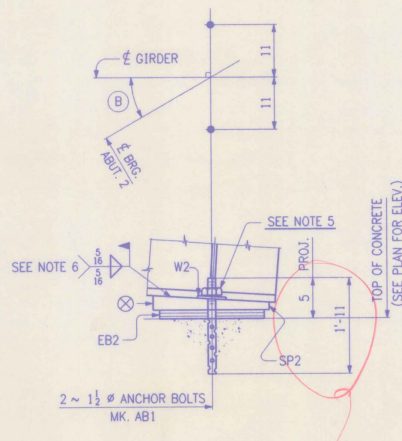


ANCHOR BOLT PLAN



SECT. A
(TYP. @ ABUT. 1)

LINE	(A)
1	24' 47' 32"
2	25' 42' 07"
3	26' 36' 46"
4	27' 31' 26"
5	28' 26' 07"
6	29' 20' 45"



SECT. B
(TYP. @ ABUT. 2)

LINE	(B)
1	29' 55' 11"
2	30' 49' 46"
3	31' 44' 25"
4	32' 39' 05"
5	33' 33' 46"
6	34' 28' 25"

*Chain shot dug
10 F 9
action bar*

SHOP DRAWINGS REVIEW
REVIEW IS FOR GENERAL COMPLIANCE WITH CONTRACT SPECIFICATIONS AND RESPONSIBILITY IS ASSIGNED TO CONTRACTOR'S SUPERVISOR

APPROVED

Barrett and Jorjic, Inc.
80 Boulevard Street
Barnes, Massachusetts 02118
DATE: 9-1-96 BY: ASD

- NOTES:
1. ALL DIMENSIONS ARE GIVEN HORIZONTALLY.
 2. ELEVATIONS ARE GIVEN TO TOP OF CONCRETE PAD.
 3. ANCHOR BOLT SETTINGS MUST BE EXACT IN EVERY DETAIL IN ACCORDANCE WITH THIS DRAWING.
 4. ANCHOR BOLTS ARE FURNISHED BY HIGH STEEL STRUCTURES, INC., AND SET BY OTHERS.
 5. BACK NUT OFF 1" FROM FINGER TIGHT AND BURR THE THREADS.
 6. AREAS OF GALVANIZING DAMAGED BY FIELD WELDING OR HANDLING SHALL BE PAINTED WITH AN APPROVED SEALER IN ACCORDANCE WITH SUBSECTION 708.02(d).
 7. ⊗ DENOTES THICK EDGE OF SOLE PLATE.

NO.	REVISION	DATE

HIGH STEEL STRUCTURES, INC. 1770 Hempstead Road
Lancaster, PA 17602-0008
Phone 717-298-5211
A Division of High Industries, Inc.

ANCHOR BOLT PLAN
U.S. ROUTE 7 OVER RAILROAD
BRIDGE NO. 80
TOWN OF WALLINGFORD, COUNTY OF RUTLAND
STATE OF VERMONT
AGENCY OF TRANSPORTATION
PROJECT NO. BRS-0137(13)

STATE CONTRACT OR REF. NO. _____
CONTRACTOR J. A. McDONALD, INC.
IN CHARGE: abs MAKE: JCC CHKD: FM DATE: 2-20-96
CONTRACT NUMBER: VT-95368 DRAWING NUMBER: E1