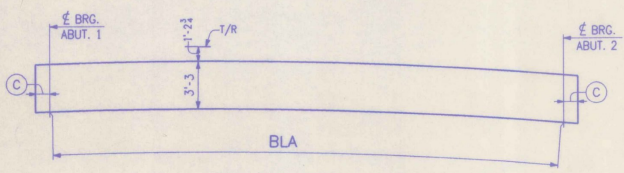


LINE	ABUT. 1		ABUT. 2	
	(A)	(B)	(A)	(B)
1	3 1/8	3 7/8	4	4 5/8
2	3 1/4	4	5	4 7/8
3	3 3/8	4 1/8	6	3 3/4

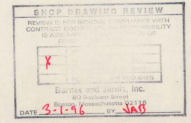
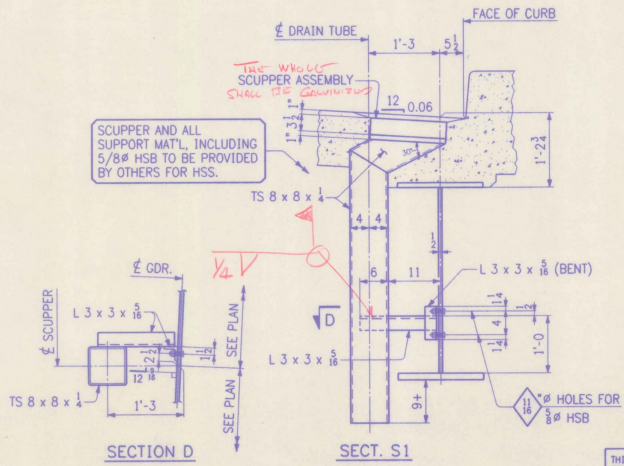
- NOTES:**
1. ALL LONGITUDINAL DIMS. ARE SLOPING ALONG BOTT. OF WEB IN "CAMBERED" POSITION.
 2. TRANSVERSE DIMS. ARE HORIZONTAL.
 3. — DENOTES DROP (ERECTED). ARROW POINTS TO LOW END.
 4. ALL BRG. STIFFS. ARE VERTICAL.
 5. INT. CONN. PLATES ARE NORMAL TO BOTTOM FLG.
 6. FOR LAYOUTS SEE DWG. WS2.

CALC. PLAN



TYP. ELEVATION

LINE	BLA	(B1)	(B2)	(C)
1	99'-11 1/4	5 9/16	6 11/16	11 1/8
2	99'-10 1/16	5 1/4	7 3/8	1'-0
3	99'-10 1/16	6	7 7/8	1'-0 1/4
4	99'-9 15/16	6 1/4	7 1/8	1'-0 1/4
5	99'-10 1/8	6 1/2	7 1/8	1'-0 1/4
6	99'-10 1/8	6 1/4	8 1/4	1'-0



THIS IS A WORK (W) DRAWING. ITS FUNCTION IS TO PROVIDE BASIC DIMENSIONS AND CONCEPTS FOR USE IN THE PREPARATION OF THE SHOP DETAILS. IT IS NOT INTENDED TO BE USED FOR ERECTION OR FABRICATION.

NO.	REVISION	DATE

HIGH STEEL STRUCTURES, INC. 1770 Hempstead Road
Lancaster, PA 17605-0008
Phone 717/299-5211
A Division of High Industries, Inc.

WORKSHEET - CALC. PLAN
U.S. ROUTE 7 OVER RAILROAD
BRIDGE NO. 80
TOWN OF WALLINGFORD, COUNTY OF RUTLAND
STATE OF VERMONT
AGENCY OF TRANSPORTATION

STATE CONTRACT PROJECT NO. BRS-0137(13)
CONTRACTOR J. A. McDONALD, INC.
IN CHARGE: abs MAKE L D 12-15 CR'D BY: DATE: 1-23-96
CONTRACT NUMBER: VT-95368 DRAWING NUMBER: WS1