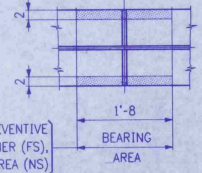
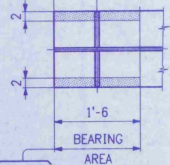
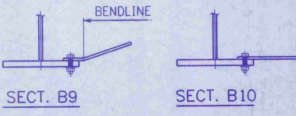


GIRDER ~ MK. G2A



PAINT LIGHT RUST PREVENTIVE
COAT OF PRIMER (FS),
EDGES & SHADED AREA (NS)



SHOP DRAWING REVIEW

REVIEWED FOR COMPLIANCE WITH
CONTRACT REQUIREMENTS FOR CONSTRUCTION OF
THE PROJECT OR RETENTION

APPROVED:

APPROVED FOR THE CONTRACTOR:

APPROVED FOR THE DESIGNER:

Barrett and Jarriss, Inc.
1000 North Street
Rutland, VT 05701
MAR 22 1996

WORK THIS DWG. WITH DWG. 8

PAINT LIGHT RUST PREVENTIVE
COAT OF PRIMER (FS),
EDGES & SHADED AREA (NS)

NO.	REVISION	DATE
HIGH STEEL STRUCTURES, INC. 1770 Hampstead Road Lancaster, PA 17608-0008 Phone 717/298-5211 A Division of High Industries, Inc.		
GIRDER G2A		
U.S. ROUTE 7 OVER OTTER CREEK		
BRIDGE NO. 75		
TOWN OF WALLINGFORD, COUNTY OF RUTLAND		
STATE OF VERMONT		
AGENCY OF TRANSPORTATION		
STATE CONTRACT OR REF. NO.	PROJECT NO. BRS-0137(13)	
CONTRACTOR	J. A. McDONALD, INC.	
IN CHARGE	abs	MADE PPF 21 CHK'D BY: LD DATE: 2-2-96
CONTRACT NUMBER	VT-95367	DRAWING NUMBER 7 OF 24

CODE: 30

400-9

02A-400

MAR 01 1996