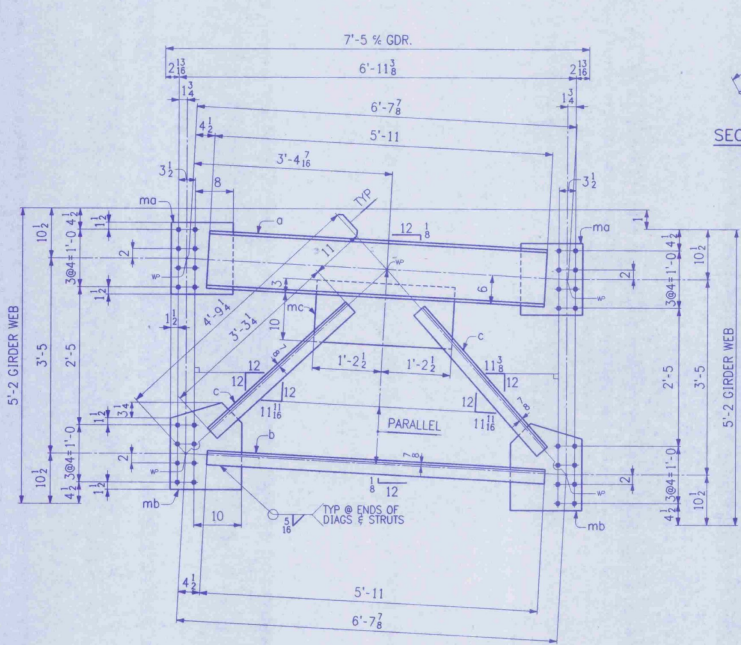
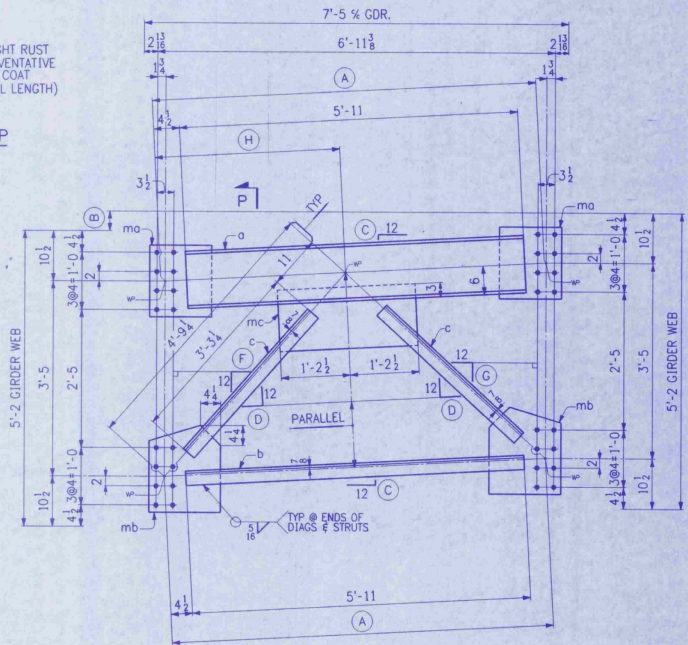


BILL OF MATERIAL					
NO.	MARK	DESCRIPTION	LENGTH	REMARKS	ITEM NO.
5	CF1	CROSSFRAMES			414
5	a	MC12 x 31	5 11		4 5
5	b	L3 x 3 x 3/8	5 11		4 2
10	c	L3 x 3 x 3/8	3 3 1/2		4 2
10	ma	PL 13 x 3/8	1 3		4 3
10	mb	PL 15 x 3/8	1 6 1/2		4 3
5	mc	PL 13 x 3/8	2 5		4 3
5	CF2	CROSSFRAMES		PAINTED	414
5	CF3	CROSSFRAMES		PAINTED	414
10	a	MC12 x 31	5 11		4 5
10	b	L3 x 3 x 3/8	5 11		4 2
20	c	L3 x 3 x 3/8	3 3 1/2		4 2
20	ma	PL 13 x 3/8	1 3		4 3
20	mb	PL 15 x 3/8	1 6 1/2		4 3
10	mc	PL 13 x 3/8	2 5		4 3



LIGHT RUST PREVENTATIVE COAT (FULL LENGTH)  
SECTION P



CROSSFRAME ~ CF1

**SHOP DRAWING REVIEW**  
Reviewed by shop specialist, approved for shop use.  
Contractor to verify dimensions, no material or workmanship to be altered without the approval of the Engineer or the Architect.  
Approved by Shop Specialist  
Approved by Engineer  
Approved by Architect  
Barrett and Jarvik, Inc.  
DATE: MAR 22 1986

CROSSFRAMES

MARK	A	B	C	D	F	G	H
CF2	6'-8	4 1/2	1 1/8	11 1/4	10 1/8	10 7/8	3'-1 9/16
CF3	6'-7 15/16	3 1/4	1/2	11 1/8	10 1/8	11 1/8	3'-2 1/16

PAINT

**SHOP NOTE**  
HOLES: 1/8" Ø  
BOLTS: NONE  
PAINT: AS NOTED, SEE DWG. N1.  
FOR GENERAL SHOP NOTES, SEE DWG. N1.

NO.	REVISION	DATE

**HIGH STEEL STRUCTURES, INC.** 1770 Hempstead Road, Lancaster, PA 17608-0008, Phone 717/299-5211  
A Division of High Industries, Inc.

**CROSSFRAMES (END & PIER)**  
U.S. ROUTE 7 OVER OTTER CREEK  
BRIDGE NO. 79  
TOWN OF WALLINGFORD, COUNTY OF RUTLAND  
STATE OF VERMONT  
AGENCY OF TRANSPORTATION

STATE CONTRACT OR REF. NO. PROJECT NO. BRS-0137(13)  
CONTRACTOR J. A. McDONALD, INC.  
IN CHARGE **abs** MADE BY **PPF** DATE 1-28-96  
CONTRACT NUMBER **VT-95367** DRAWING NUMBER **3 OF 24**