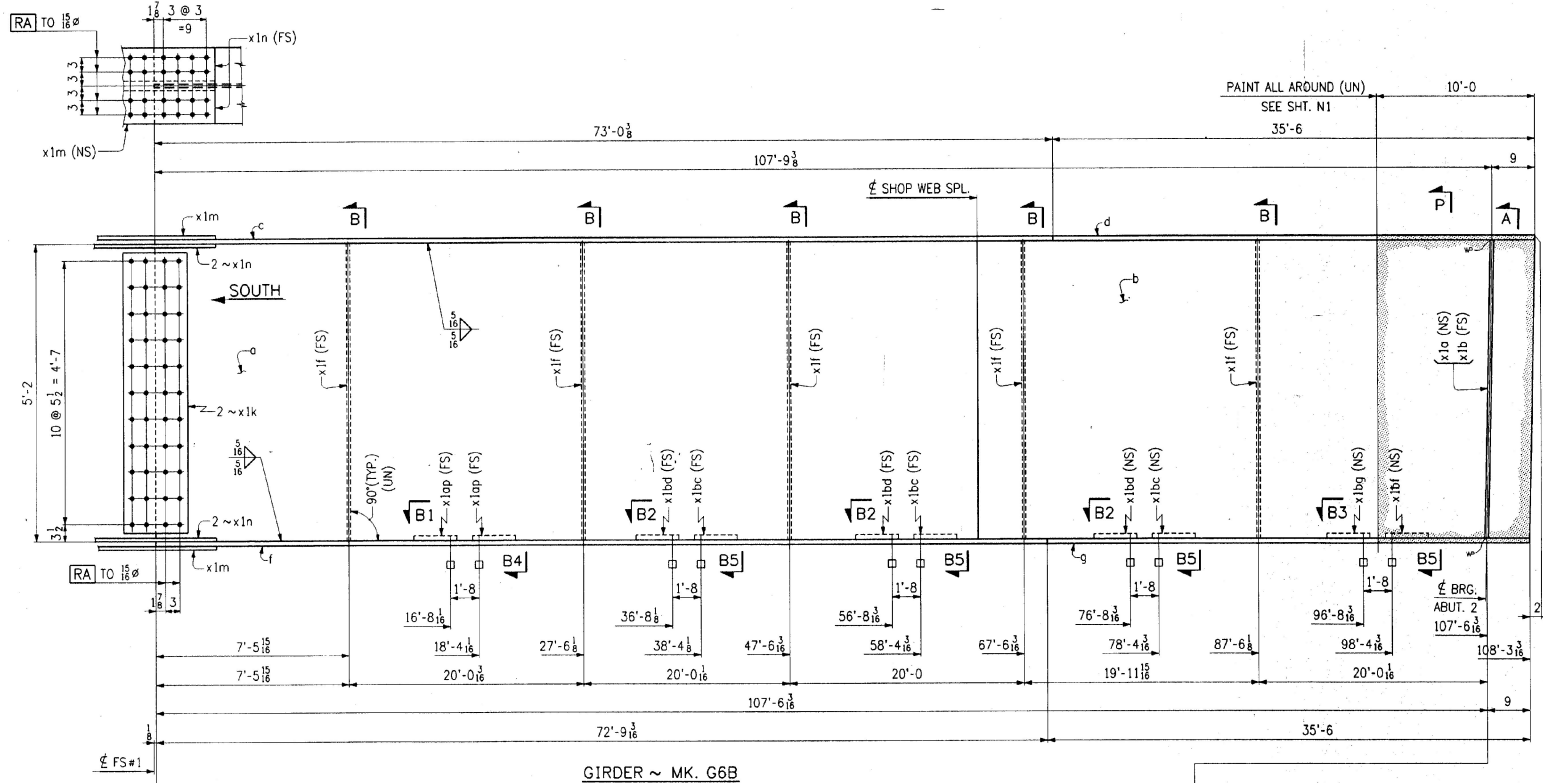
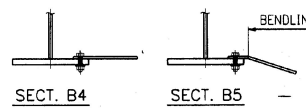
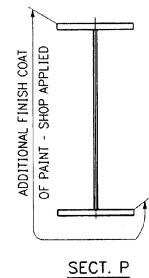
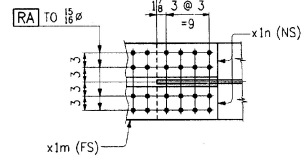


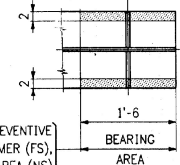
FED. ROAD DIST. NO.	STATE	FED. AID PROJ. NO.
VT		



GIRDER ~ MK. G6B



PAINT LIGHT RUST PREVENTIVE COAT OF PRIMER (FS), EDGES & SHADED AREA (NS)



SHOP DRAWING REVIEW
 REVIEWED FOR GENERAL COMPLIANCE WITH CONTRACT DOCUMENTS. THE REVIEWER'S SIGNATURE IS NOT A GUARANTEE OF THE ACCURACY OR COMPLETENESS OF THE DRAWING OR THE DESIGN.
 DATE: MAR 22 1996

WORK THIS DWG. WITH DWG. 24

NO.	REVISION	DATE

HIGH STEEL STRUCTURES, INC. 1770 Hemstead Road
 Londeston, PA 17605-0008
 Phone 717/294-5311
 A Division of Hjs Industries, Inc.

GIRDER G6B
 U.S. ROUTE 7 OVER OTTER CREEK
 BRIDGE NO. 79
 TOWN OF WALLINGFORD, COUNTY OF RUTLAND
 STATE OF VERMONT
 AGENCY OF TRANSPORTATION

STATE CONTRACT OR REV. NO. PROJECT NO. BRS-0137(13)
 CONTRACTOR J. A. McDONALD, INC.
 IN CHARGE cbs MAKE PFP 2-3 CHK'D LTD DATE 2-5-96
 CONTRACT NUMBER VT-95367 DRAWING NUMBER 23 OF 24

CODE: 30

400-9

MAR 01 1996