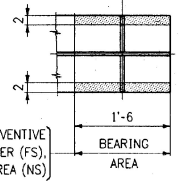
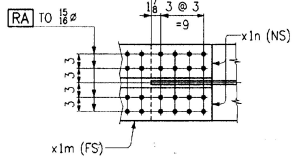
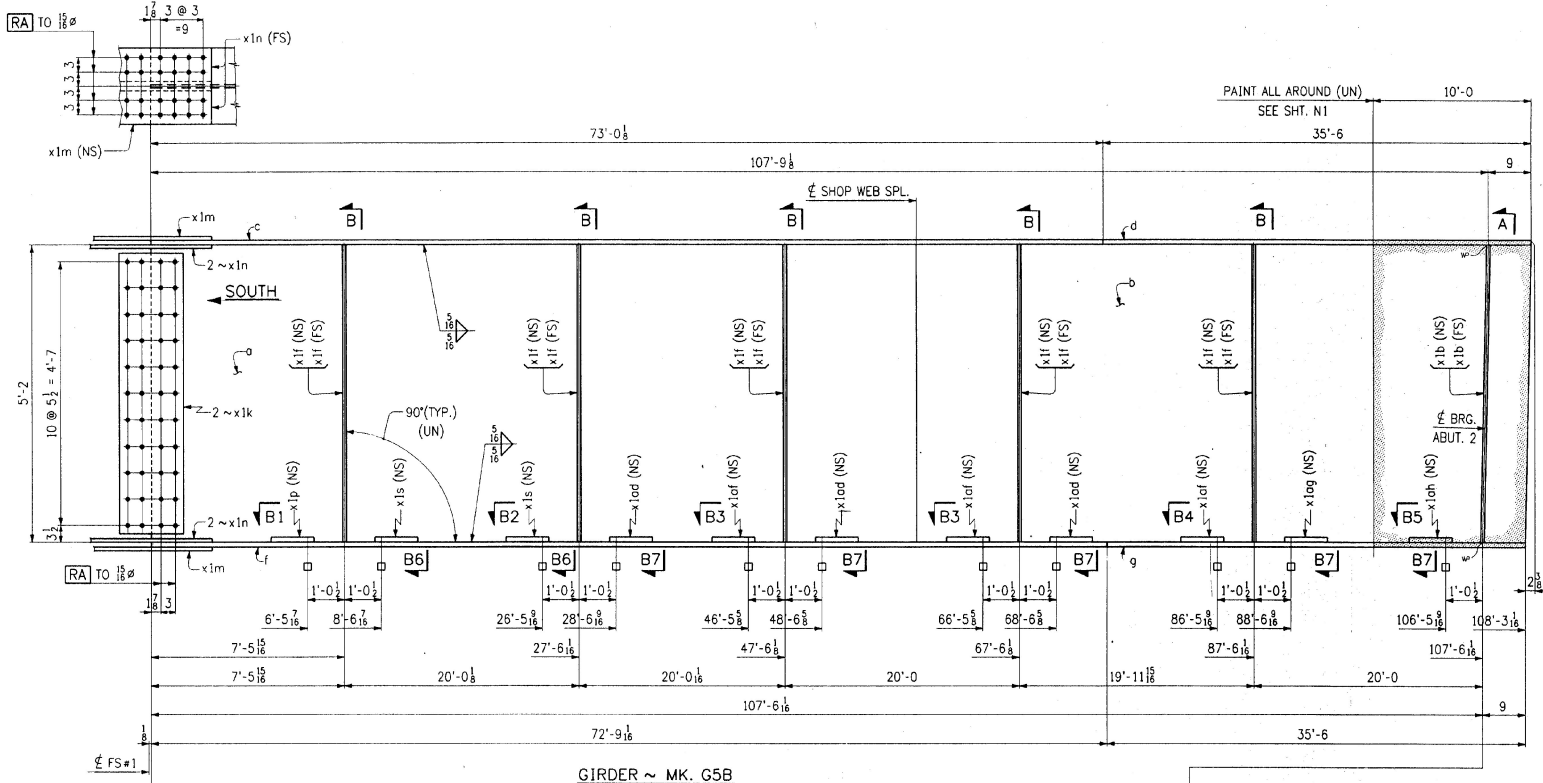
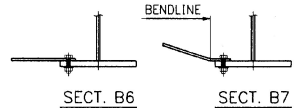


FED. ROAD DIV. NO.	STATE	FED. NO. PROJ. NO.
	VT	



PAINT LIGHT RUST PREVENTIVE COAT OF PRIMER (FS) EDGES & SHADED AREA (NS)



**SHOP DRAWING REVIEW**

REVIEWED FOR GENERAL COMPLIANCE WITH CONTRACT AND SPECIFICATIONS. REVIEWER'S SIGNATURE AND DATE REQUIRED FOR CONTRACT REVIEW OF COMPLETION OF THIS DRAWING.

DATE: MAR 22 1995

WORK THIS DWG. WITH DWG. 18

NO.	REVISION	DATE

**HIGH STEEL STRUCTURES, INC.** 1770 Hempstead Road, Lancaster, PA 17606-0008  
A Division of High Industries, Inc.

**GIRDER G5B**  
U.S. ROUTE 7 OVER OTTER CREEK  
BRIDGE NO. 79  
TOWN OF WALLINGFORD, COUNTY OF RUTLAND  
STATE OF VERMONT  
AGENCY OF TRANSPORTATION  
PROJECT NO. BRS-0137(13)  
CONTRACTOR: J. A. McDONALD, INC.  
IN CHARGE: abs MADE PPP BY: LD DATE: 2-5-95  
CONTRACT NUMBER: VT-95367 DRAWING NUMBER: 21 OF 24