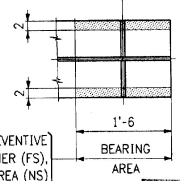
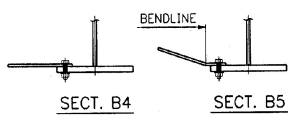
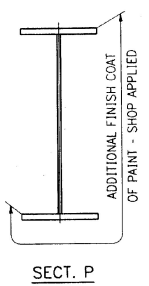
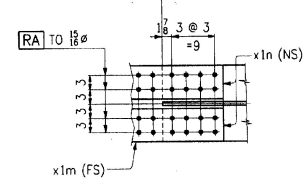
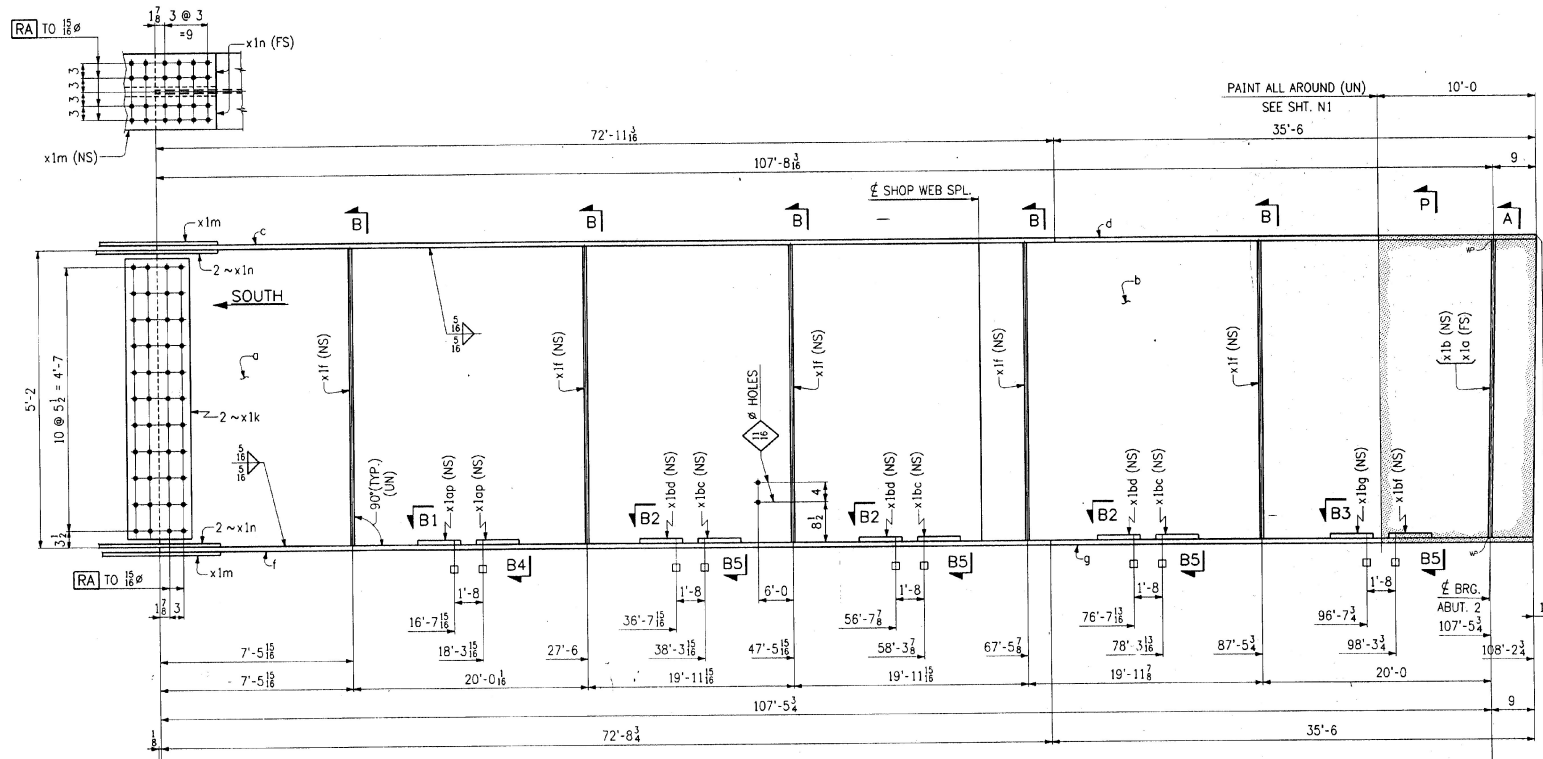


FED. ROAD DIST. NO.	STATE	FED. AID PROJ. NO.
	VT	



PAINT LIGHT RUST PREVENTIVE COAT OF PRIMER (FS), EDGES & SHADED AREA (NS)

SHOP DRAWING REVIEW
 REVIEWED FOR TECHNICAL COMPLIANCE WITH CONTRACT REQUIREMENTS AND RESPONSIBILITY OF CONTRACTOR.
 REVIEWED FOR CONFORMANCE WITH CONTRACT REQUIREMENTS ON DETAILS.
 DATE: 2/22/96
 BY: J. A. McDONALD, INC.
 PROJECT: WALLINGFORD BRIDGE
 DRAWING: GIRDER
 DESIGNED BY: JAMES BARRIS
 CHECKED BY: JAMES BARRIS
 DATE: MAR 22 1996

GIRDER ~ MK. G1B

WORK THIS DWG. WITH DWG. 16

CODE: 30

NO.	REVISION	DATE
HIGH STEEL STRUCTURES, INC. 1770 Hempstead Road Lancaster, PA 17606-0008 Phone 717/299-5211 <i>A Division of High Industries, Inc.</i>		
GIRDER G1B U.S. ROUTE 7 OVER OTTER CREEK BRIDGE NO. 79 TOWN OF WALLINGFORD, COUNTY OF RUTLAND STATE OF VERMONT AGENCY OF TRANSPORTATION		
STATE CONTRACT OR REF. NO. PROJECT NO. BRS-0137(13)		
CONTRACTOR J. A. McDONALD, INC. MADE BY: PPF 2-2 CHK'D BY: LD DATE: 2-3-96		
IN CHARGE: abs CONTRACT NUMBER: VT-95367 DRAWING NUMBER: 15 OF 24		

MAR 01 1996