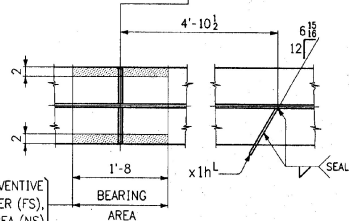
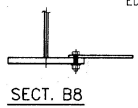
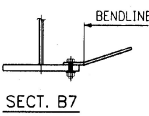
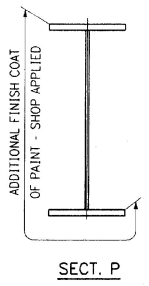
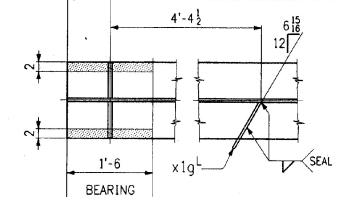


GIRDER ~ MK. G6A



SHOP DRAWING REVIEW
 REVIEWED FOR CONFORMANCE WITH CONTRACT REQUIREMENTS. THE REVIEWING ENGINEER ASSUMES NO LIABILITY OR ASSOCIATED FOR DESIGN OR CONSTRUCTION DEFECTS.
 DATE: MAR 22 1998
 BY: [Signature]

WORK THIS DWG. WITH DWG. 14

CODE: 30

NO.	REVISION	DATE

HIGH STEEL STRUCTURES, INC.
 1770 Hempstead Road
 Lancaster, PA 17603-0008
 Phone 717/298-5211
 A Division of High Industries, Inc.

G6A
 U.S. ROUTE 7 OVER OTTER CREEK
 BRIDGE NO. 79
 TOWN OF WALLINGFORD, COUNTY OF RUTLAND
 STATE OF VERMONT
 AGENCY OF TRANSPORTATION
 PROJECT NO. BRS-0137(13)

STATE CONTRACT NO. REF. NO.
 CONTRACTOR: J. A. McDONALD, INC.
 IN CHARGE: **abs** MADE PPP 2-1, CHK'D BY: LD, DATE: 2-2-96
 CONTRACT NUMBER: **VT-95367** DRAWING NUMBER: **13 OF 24**