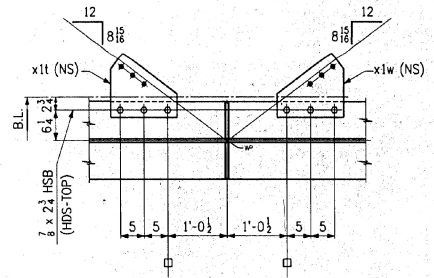
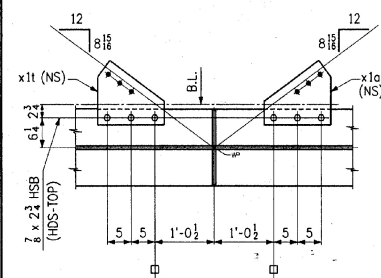


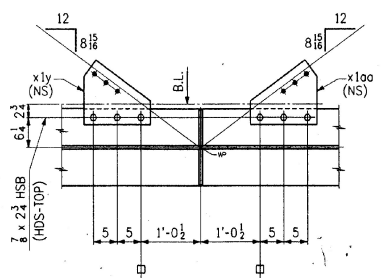
SECT. B1 (DEVELOPED)



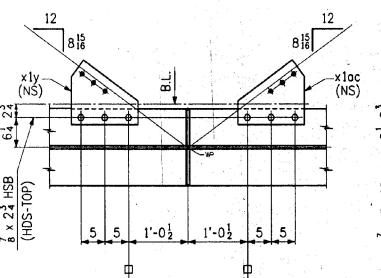
SECT. B2 (DEVELOPED)



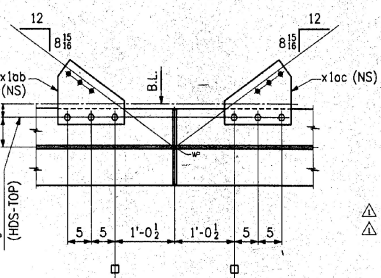
SECT. B3 (DEVELOPED)



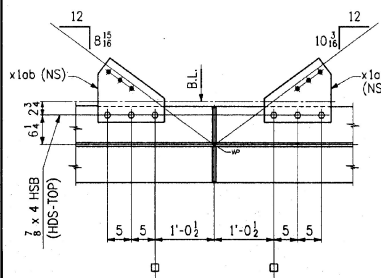
SECT. B4 (DEVELOPED)



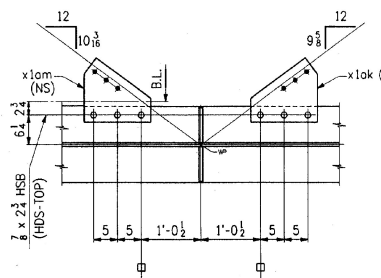
SECT. B5 (DEVELOPED)



SECT. B6 (DEVELOPED)



SECT. B7 (DEVELOPED)



SECT. B8 (DEVELOPED)

SHOP DRAWING REVIEW  
 REVIEWED FOR CONFORMANCE WITH  
 CONTRACT DOCUMENTS AND RESPONSIBILITY  
 CONTRACTOR'S. THIS REVIEW IS NOT A  
 GUARANTEE OF THE QUALITY OF THE  
 WORK.  
 J. A. McDONALD, INC.  
 1770 HEMLOCK ROAD  
 LANCASTER, PA 17603-0008  
 PHONE 717-299-5211  
 DATE: MAR 22 1996

SHOP NOTE  
 HOLES: 1/8" (UN)  
 BOLTS: AS NOTED  
 PAINT: AS NOTED, SEE DWG. N1  
 FOR GENERAL SHOP NOTES, SEE DWG. N1.  
 FOR WEB CAMBER DIAGRAM, SEE DWG. WC1.

WORK THIS DWG. WITH DWG. 7

BILL OF MATERIAL					
NO.	MARK	DESCRIPTION	LENGTH	REMARKS	ITEM
ONE	G2A	GIRDER			41170
1	o	PL 62 x 3/8	88 9	(T)	2-3
1	b	PL 62 x 3/8	62 0 1/8	(T)	2-2
1	c	PL 16 x 1/2	34 9	(T)	2-18
1	d	PL 16 x 1/2	62 0 1/8	(T)	2-17
1	f	PL 16 x 1 1/4	11 0	(T)	2-11
1	g	PL 16 x 2 1/8	26 9	(T)	2-9
1	h	PL 16 x 1 1/8	16 1 1/4	(T)	2-15
1	k	PL 16 x 1/2	34 9	(T)	2-18
1	m	PL 16 x 1/2	62 0	(T)	2-17
1	n	PL 16 x 1 1/4	11 0	(T)	2-11
1	p	PL 16 x 2 1/8	26 9	(T)	2-9
1	s	PL 16 x 1 1/8	16 3/8	(T)	2-15
4	x1b	BAR 7 1/2 x 7/8	5 2		3-13
12	x1f	BAR 7 1/2 x 1/2	5 2		3-14
2	x1w	PL 14 x 3/8	1 1 1/2	BENT	3-16
2	x1i	PL 14 x 3/8	1 1 1/2	BENT	3-16
2	x1y	PL 14 x 3/8	1 1 1/2	BENT	3-16
2	x1oo	PL 14 x 3/8	1 1 1/2	BENT	3-16
2	x1oc	PL 14 x 3/8	1 1 1/2	BENT	3-16
2	x1ob	PL 14 x 3/8	1 1 1/2	BENT	3-16
1	x1on	PL 14 x 3/8	1 2 1/8	BENT	3-16
1	x1om	PL 14 x 3/8	1 2 1/8	BENT	3-16
1	x1ok	PL 14 x 3/8	1 2 1/8	BENT	3-16
30		3/8" H.S. BOLTS	0 23		B1-2
6		1/2" H.S. BOLTS	0 3		B1-3
6		3/4" H.S. BOLTS	0 4		B1-4
42		WASHERS FOR 3/8" H.S. BOLTS			B1-5
3		3/4" H.S. BOLTS	0 23	F436 GALV.	B1-6
3		WASHERS FOR 3/4" H.S. BOLTS		F436 GALV.	B1-7

CHANGED "MILL" TO "GRIND", BOLT SPECS.	2-21-96
NO. REVISION	DATE

HIGH STEEL STRUCTURES, INC. 1770 Hemlock Road, Lancaster, PA 17603-0008, Phone 717-299-5211

GIRDER G2A

U.S. ROUTE 7 OVER OTTER CREEK BRIDGE NO. 79

TOWN OF WALLINGFORD, COUNTY OF RUTLAND

STATE OF VERMONT

AGENCY OF TRANSPORTATION

STATE CONTRACT OR REF. NO. PROJECT NO. BRS-0137(13)

CONTRACTOR J. A. McDONALD, INC. DATE: 2-2-96

IN CHARGE: abs MADE PFP: 1 CHK'D: LD DATE: 2-2-96

CONTRACT NUMBER: VT-95367 DRAWING NUMBER: 8 OF 24