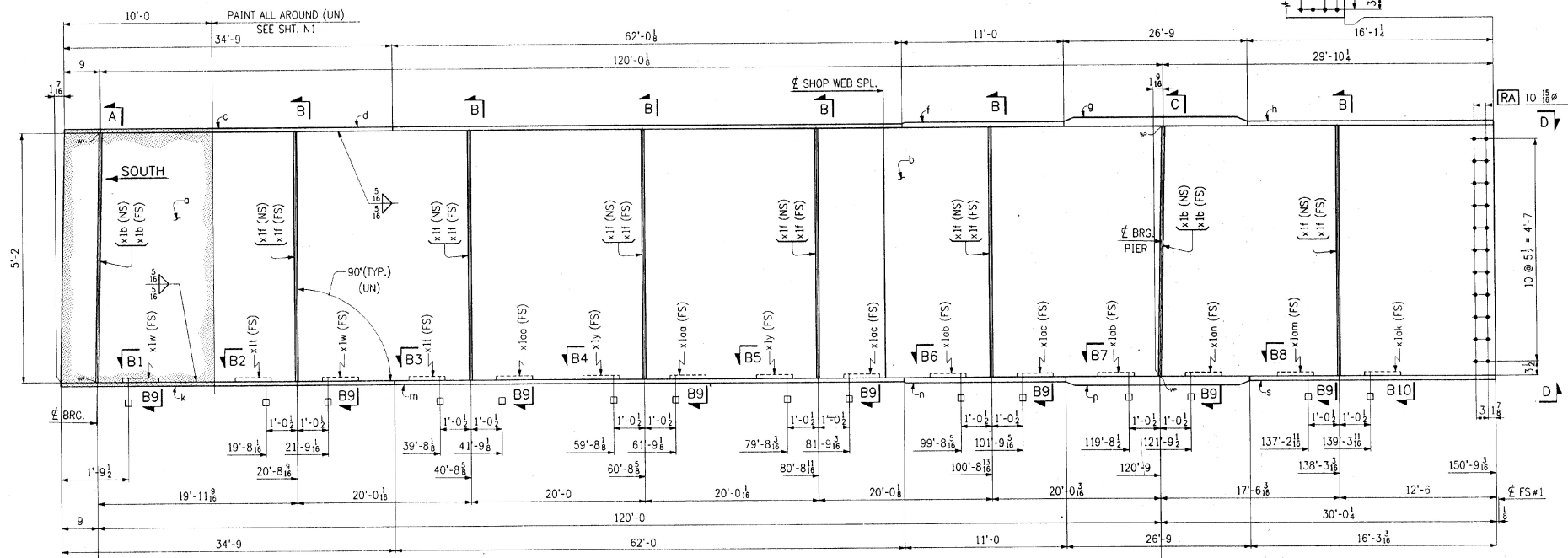
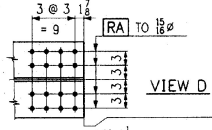
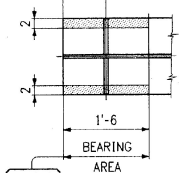


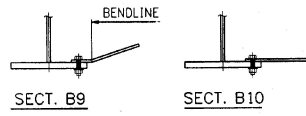
FED. ROAD DIST. NO.	STATE	FED. AID PROJ. NO.
	VT	



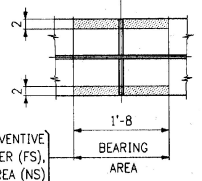
GIRDER ~ MK. G2A



PAINT LIGHT RUST PREVENTIVE
COAT OF PRIMER (FS).
EDGES & SHADED AREA (NS)



PAINT LIGHT RUST PREVENTIVE
COAT OF PRIMER (FS).
EDGES & SHADED AREA (NS)



CHECK DRAWING REVIEW	
DATE	BY
MAR 22 1996	...

WORK THIS DWG. WITH DWG. 8

NO.	REVISION	DATE
HIGH STEEL STRUCTURES, INC.		
1770 Hempstead Road Lancaster, PA 17605-0008 Phone 717/298-0311		
GIRDER G2A		
U.S. ROUTE 7 OVER OTTER CREEK BRIDGE NO. 79		
TOWN OF WALLINGFORD, COUNTY OF RUTLAND		
STATE OF VERMONT		
AGENCY OF TRANSPORTATION		
PROJECT NO. BRS-0137(13)		
STATE CONTRACT OR REF. NO.	J. A. McDONALD, INC.	
CONTRACTOR	MADE PPP 2-1 CHW'D BY LJD DATE 2-2-96	
IN CHARGE:	abs	DRAWING NUMBER: 7 OF 24
CONTRACT NUMBER:	VT-95367	DRAWING NUMBER: 7 OF 24