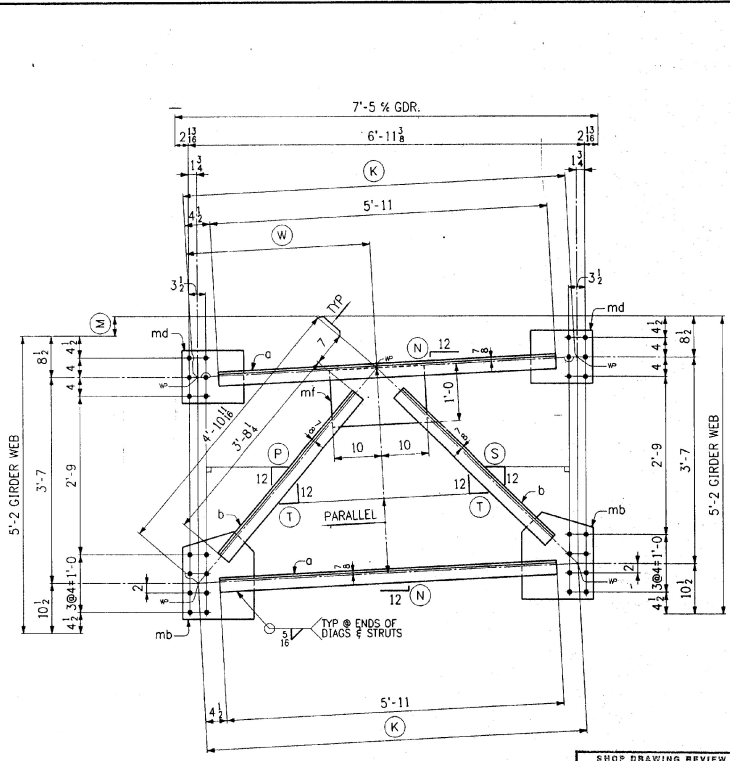


INT. CROSSFRAMES

MARK	(A)	(B)	(C)	(D)	(E)	(F)	(G)	(H)
CF4	6'-8	4 1/8	3/8	12	11 1/8	10 1/8	11 3/8	3'-6 1/8
CF5	6'-7 1/8	3 3/8	1/2	12	11 1/8	10 1/4	11 3/8	3'-5 1/8
CF6	6'-7 1/8	2 1/2	1/8	11 1/8	12	10 1/8	11 3/8	3'-5 1/8
CF7	6'-7 1/8	2 1/8	5/16	11 1/4	12	10 9/16	11 1/8	3'-5 1/8
CF8	6'-7 1/8	1 1/2	1/4	11 1/8	12	10 1/4	11 1/8	3'-4 1/2
CF9	6'-7 1/8	3/8	1/16	11 1/4	12	11 1/8	11 1/8	3'-4 1/2



INT. CROSSFRAMES

MARK	(K)	(M)	(N)	(P)	(S)	(T)	(W)
CF10	6'-7 1/8	1/4	1/8	11 1/8	11 1/8	11 1/8	3'-3 1/8
CF11	6'-7 1/8	3/4	1/8	10 1/8	11 1/8	11 1/8	3'-3 1/8
CF12	6'-7 1/8	1 1/2	1/4	10 1/4	11 1/8	11 1/8	3'-3 1/8
CF13	6'-7 1/8	2	5/16	10 5/8	11 1/4	11 1/8	3'-2 1/8
CF14	6'-7 1/8	2 1/2	1/8	10 1/8	11 1/8	11 1/8	3'-2 1/2

SHOP DRAWING REVIEW
 REVIEWED FOR GENERAL CONFORMANCE WITH
 CONTRACT DOCUMENTS AND RESPONSIBILITY
 IS ASSIGNED TO SUBMITTER OF
 DRAWINGS OR DETAILS:
 DATE: **MAR 22 1966**

SHOP NOTE
 HOLES: 1/8" Ø
 BOLTS: NONE
 PAINT: NONE
 FOR GENERAL SHOP NOTES, SEE DWG. N1.

BILL OF MATERIAL					
NO.	MARK	DESCRIPTION	LENGTH	REMARKS	ITEM QUANTITY
5	CF4	CROSSFRAMES			25.3
5	CF5	CROSSFRAMES			25.3
5	CF6	CROSSFRAMES			25.3
5	CF7	CROSSFRAMES			25.3
5	CF8	CROSSFRAMES			25.3
5	CF9	CROSSFRAMES			25.3
5	CF10	CROSSFRAMES			25.3
5	CF11	CROSSFRAMES			25.3
5	CF12	CROSSFRAMES			25.3
5	CF13	CROSSFRAMES			25.3
5	CF14	CROSSFRAMES			25.3
110	a	L3 x 3 x 1/8	5	11	4.2
110	b	L3 x 3 x 3/8	3	8 1/2	4.2
110	md	PL 11 x 3/8	1	1	4.2
110	mb	PL 15 x 3/8	1	6 1/4	4.2
55	mf	PL 12 x 3/8	1	8	4.2

NO.	REVISION	DATE

HIGH STEEL STRUCTURES, INC. 1770 Harland Road, Lancaster, PA 17605-0005, Phone 717/299-5211, A Division of High Industries, Inc.

CROSSFRAMES (INT)
 U.S. ROUTE 7 OVER OTTER CREEK
 BRIDGE NO. 79
 TOWN OF WALLINGFORD, COUNTY OF RUTLAND
 STATE OF VERMONT
 AGENCY OF TRANSPORTATION

STATE CONTRACT OR REF. NO. PROJECT NO. BRS-0137(13)
 CONTRACTOR J. A. McDONALD, INC.
 IN CHARGE abs DATE PPF 1-22 CHK'D BY DATE 1-28-66
 CONTRACT NUMBER VT-95367 DRAWING NUMBER 4 OF 24