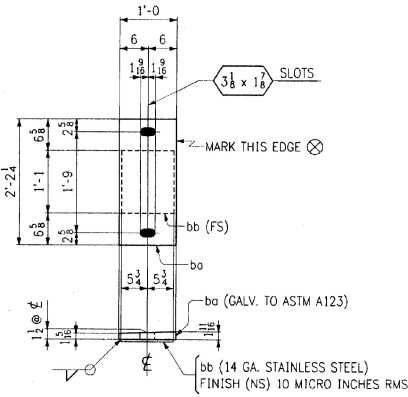
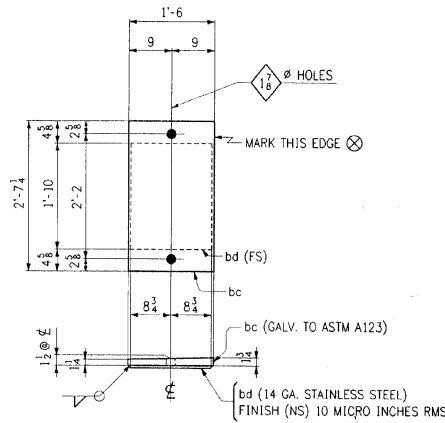


Sole Plates & Fabric Pads
Material List

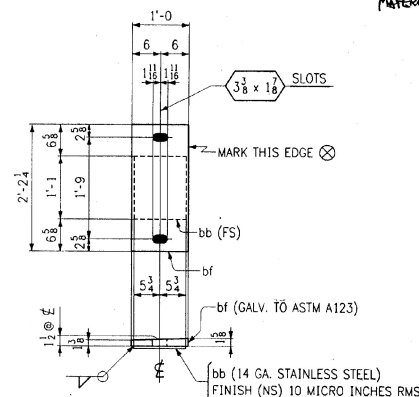
FED. ROAD DIST. NO.	STATE	FED. AID PROJ. NO.
	VT	



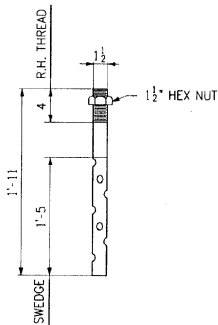
SOLE PLATES ~ MK. SP1
(ABUT. 1)



SOLE PLATES ~ MK. SP2
(PIER)



SOLE PLATES ~ MK. SP3
(ABUT. 2)



ANCHOR BOLTS ~ MK. AB1
(GALV. A153)

CODE: P

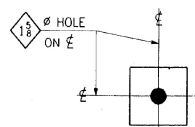


PLATE WASHERS ~ MK. W1
(ABUT.) (GALV. A153)

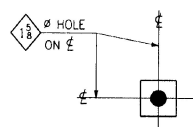
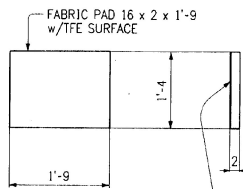
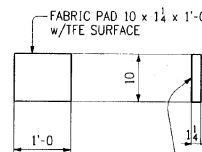


PLATE WASHERS ~ MK. W2
(PIER) (GALV. A153)



FABRIC PADS ~ EB1
(FIX) CODE: P

TFE PER VT STD. SPECS 731.04 BONDED TO FABRIC PAD



FABRIC PADS ~ EB2
(EXP) CODE: P

TFE PER VT STD. SPECS 731.04 BONDED TO FABRIC PAD



SHOP NOTE
HOLES: AS NOTED
BOLTS: NONE
PAINT: NONE
FOR GENERAL SHOP NOTES, SEE DWG. N1.

BILL OF MATERIAL					
NO.	MARK	DESCRIPTION	LENGTH	REMARKS	ITEM
6	SP1	SOLE PLATE			136
6	bo	PL 12 x (1 1/2 x 1 1/2)	2	24	BEVELED SOLE PLATE A270-36
6	bd	PL 1 1/2 x 1 1/2	1	1	STAINLESS STEEL ASTM A240, TYPE 304
6	SP2	SOLE PLATE			243
6	bc	PL 18 x (1 1/2 x 1 1/2)	2	7 1/2	BEVELED SOLE PLATE A270-36
6	bd	PL 1 1/2 x 1 1/2	1	10	STAINLESS STEEL ASTM A240, TYPE 304
6	SP3	SOLE PLATE			136
6	bf	PL 12 x (1 1/2 x 1 1/2)	2	24	BEVELED SOLE PLATE A270-36
6	bb	PL 1 1/2 x 1 1/2	1	1	STAINLESS STEEL ASTM A240, TYPE 304
ANCHOR BOLTS					
36	AB1	SWEDGE BOLTS	1	11	A270-36 W/ 1/2 HEX GR. A STD. PER MAT. GALV. A153
WASHERS					
24	W1	BAR 4 x 3/8	0	4	A270-36 GALV. A153
12	W2	BAR 2 1/2 x 3/8	0	2 1/2	A270-36 GALV. A153
FABRIC PADS					
6	EB1	PAD 16 x 2	1	9	PER VERMONT STD. SPECS SECT. 731.01 (FIX)
12	EB2	PAD 10 x 1 1/4	1	0	PER VERMONT STD. SPECS SECT. 731.01 (EXP)

△		
△		
△		
NO.	REVISION	DATE
<p>1770 HARTFORD ROAD LONGLEAF, PA 17605-0008 Phone 717/298-5211</p> <p>HIGH STEEL STRUCTURES, INC. <i>HS</i> A Division of High Industries, Inc.</p>		
BEARINGS		
U.S. ROUTE 7 OVER OTTER CREEK		
BRIDGE NO. 79		
TOWN OF WALLINGFORD, COUNTY OF RUTLAND		
STATE OF VERMONT		
AGENCY OF TRANSPORTATION		
STATE CONTRACT NO. REF. NO.	PROJECT NO. BRS-0137(13)	
CONTRACTOR J. A. McDONALD, INC.		
IN CHARGE: <i>abs</i>	MADE BY: <i>JCC</i>	CHKD BY: <i>JE</i>
CONTRACT NUMBER: VT-95367	DATE: 1-31-96	
DRAWING NUMBER: 1 OF 24		

CODE: 60 (UN)

400-B

MAR 01 1996