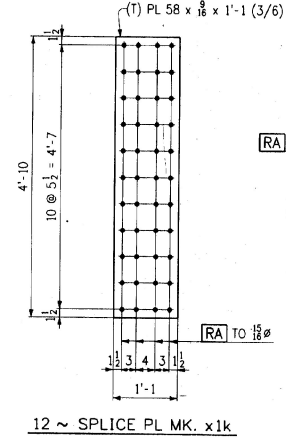
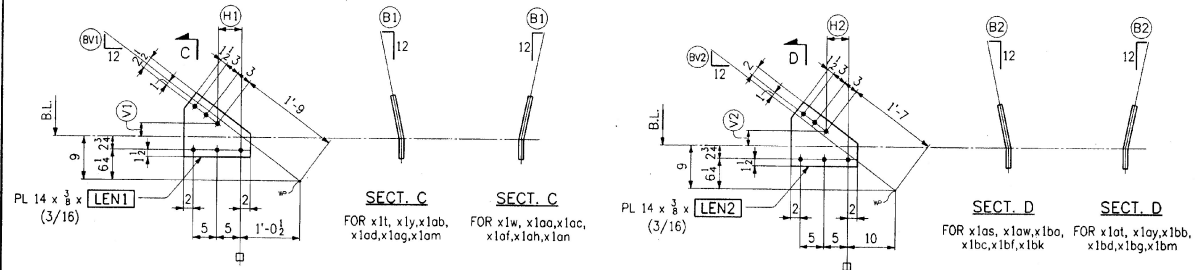
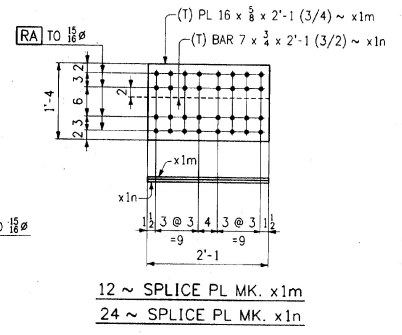


1 EA. ~ DRIP PLATE MK. x19_L
1 EA. ~ DRIP PLATE MK. x19_L



12 ~ SPLICE PL MK. x1k



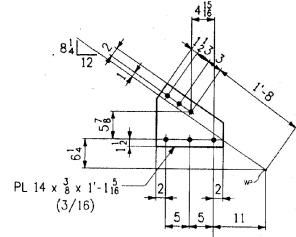
12 ~ SPLICE PL MK. x1m
24 ~ SPLICE PL MK. x1n

LATERAL GUSSET PLATES

MARK	No. REQ'D	(H)	(V)	LEN1	(B)	
x1p	2	8 1/4	5 3/8	2 1/8	1'-0 5/8	FLAT
x1s	4	8 1/8	4 1/8	2 3/4	1'-1 1/2	FLAT
x1t	4	8 1/8	4 1/8	2 3/4	1'-1 1/2	9/16
x1w	4	8 1/8	4 1/8	2 3/4	1'-1 1/2	3/8
x1y	4	8 1/8	4 1/8	2 3/4	1'-1 1/2	3/8
x1ao	4	8 1/8	4 1/8	2 3/4	1'-1 1/2	1/4
x1ob	4	8 1/8	4 1/8	2 3/4	1'-1 1/2	1/4
x1oc	4	8 1/8	4 1/8	2 3/4	1'-1 1/2	1/4
x1od	6	8 1/8	4 1/8	2 3/4	1'-1 1/2	3/16
x1of	6	8 1/8	4 1/8	2 3/4	1'-1 1/2	3/16
x1ag	2	8 1/8	4 1/8	2 3/4	1'-1 1/2	3/16
x1ah	2	8 1/8	4 1/8	2 3/4	1'-1 1/2	3/16
x1ak	2	9 5/8	4 1/2	3 3/8	1'-2 1/4	FLAT
x1am	2	10 3/8	4 3/8	3 1/8	1'-2 1/8	1/8
x1an	2	10 3/8	4 3/8	3 1/8	1'-2 1/8	1/8

LATERAL GUSSET PLATES

MARK	No. REQ'D	(H)	(V)	LEN2	(B)	
x1op	4	8 1/8	4 3/8	3 3/8	1'-1 1/2	FLAT
x1os	4	8 1/8	4 3/8	3 3/8	1'-1 1/2	9/16
x1ot	4	8 1/8	4 3/8	3 3/8	1'-1 1/2	3/8
x1ow	4	8 1/8	4 3/8	3 3/8	1'-1 1/2	3/8
x1oy	4	8 1/8	4 3/8	3 3/8	1'-1 1/2	3/8
x1bo	4	8 1/8	4 3/8	3 3/8	1'-1 1/2	1/4
x1bb	4	8 1/8	4 3/8	3 3/8	1'-1 1/2	1/4
x1bc	6	8 1/8	4 3/8	3 3/8	1'-1 1/2	3/16
x1bd	6	8 1/8	4 3/8	3 3/8	1'-1 1/2	3/16
x1bf	2	8 1/8	4 3/8	3 3/8	1'-1 1/2	3/16
x1bg	2	8 1/8	4 3/8	3 3/8	1'-1 1/2	3/16
x1bh	2	9 5/8	4 3/8	3 3/8	1'-2 1/4	FLAT
x1bk	2	10 3/8	4 3/8	3 3/8	1'-2 1/8	1/8
x1bm	2	10 3/8	4 3/8	3 3/8	1'-2 1/8	1/8



2 ~ LATERAL GUSSET PLATES ~ x1bn

SHOP NOTE
HOLES: 1/8" Ø (UN)
BOLTS: NONE
PAINT: NONE
FOR GENERAL SHOP NOTES, SEE DWG. N1.

STATE CONTRACT OR REF. NO.	CONTRACT NUMBER	CONTRACT DATE
	VT-95367	2-1-86
CONTRACTOR	MADE PPP 1-25 CHRD BY: L.D.	DATE: 2-1-86
J. A. McDONALD, INC.		
HIGH STEEL STRUCTURES, INC. 1770 Hempstead Road, Lancaster, PA 17605-0008, Phone 717/299-5211		
GIRDER JOB STANDARDS		
U.S. ROUTE 7 OVER OTTER CREEK		
BRIDGE NO. 79		
TOWN OF WALLINGFORD, COUNTY OF RUTLAND		
STATE OF VERMONT		
AGENCY OF TRANSPORTATION		
PROJECT NO. BRS-0137(13)		
STATE CONTRACT OR REF. NO.	CONTRACT NUMBER	CONTRACT DATE
	VT-95367	2-1-86
CONTRACTOR	MADE PPP 1-25 CHRD BY: L.D.	DATE: 2-1-86
J. A. McDONALD, INC.		
HIGH STEEL STRUCTURES, INC. 1770 Hempstead Road, Lancaster, PA 17605-0008, Phone 717/299-5211		
GIRDER JOB STANDARDS		
U.S. ROUTE 7 OVER OTTER CREEK		
BRIDGE NO. 79		
TOWN OF WALLINGFORD, COUNTY OF RUTLAND		
STATE OF VERMONT		
AGENCY OF TRANSPORTATION		
PROJECT NO. BRS-0137(13)		
STATE CONTRACT OR REF. NO.	CONTRACT NUMBER	CONTRACT DATE
	VT-95367	2-1-86
CONTRACTOR	MADE PPP 1-25 CHRD BY: L.D.	DATE: 2-1-86
J. A. McDONALD, INC.		
HIGH STEEL STRUCTURES, INC. 1770 Hempstead Road, Lancaster, PA 17605-0008, Phone 717/299-5211		
GIRDER JOB STANDARDS		
U.S. ROUTE 7 OVER OTTER CREEK		
BRIDGE NO. 79		
TOWN OF WALLINGFORD, COUNTY OF RUTLAND		
STATE OF VERMONT		
AGENCY OF TRANSPORTATION		
PROJECT NO. BRS-0137(13)		
STATE CONTRACT OR REF. NO.	CONTRACT NUMBER	CONTRACT DATE
	VT-95367	2-1-86
CONTRACTOR	MADE PPP 1-25 CHRD BY: L.D.	DATE: 2-1-86
J. A. McDONALD, INC.		
HIGH STEEL STRUCTURES, INC. 1770 Hempstead Road, Lancaster, PA 17605-0008, Phone 717/299-5211		
GIRDER JOB STANDARDS		
U.S. ROUTE 7 OVER OTTER CREEK		
BRIDGE NO. 79		
TOWN OF WALLINGFORD, COUNTY OF RUTLAND		
STATE OF VERMONT		
AGENCY OF TRANSPORTATION		
PROJECT NO. BRS-0137(13)		