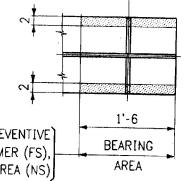
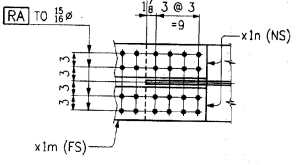
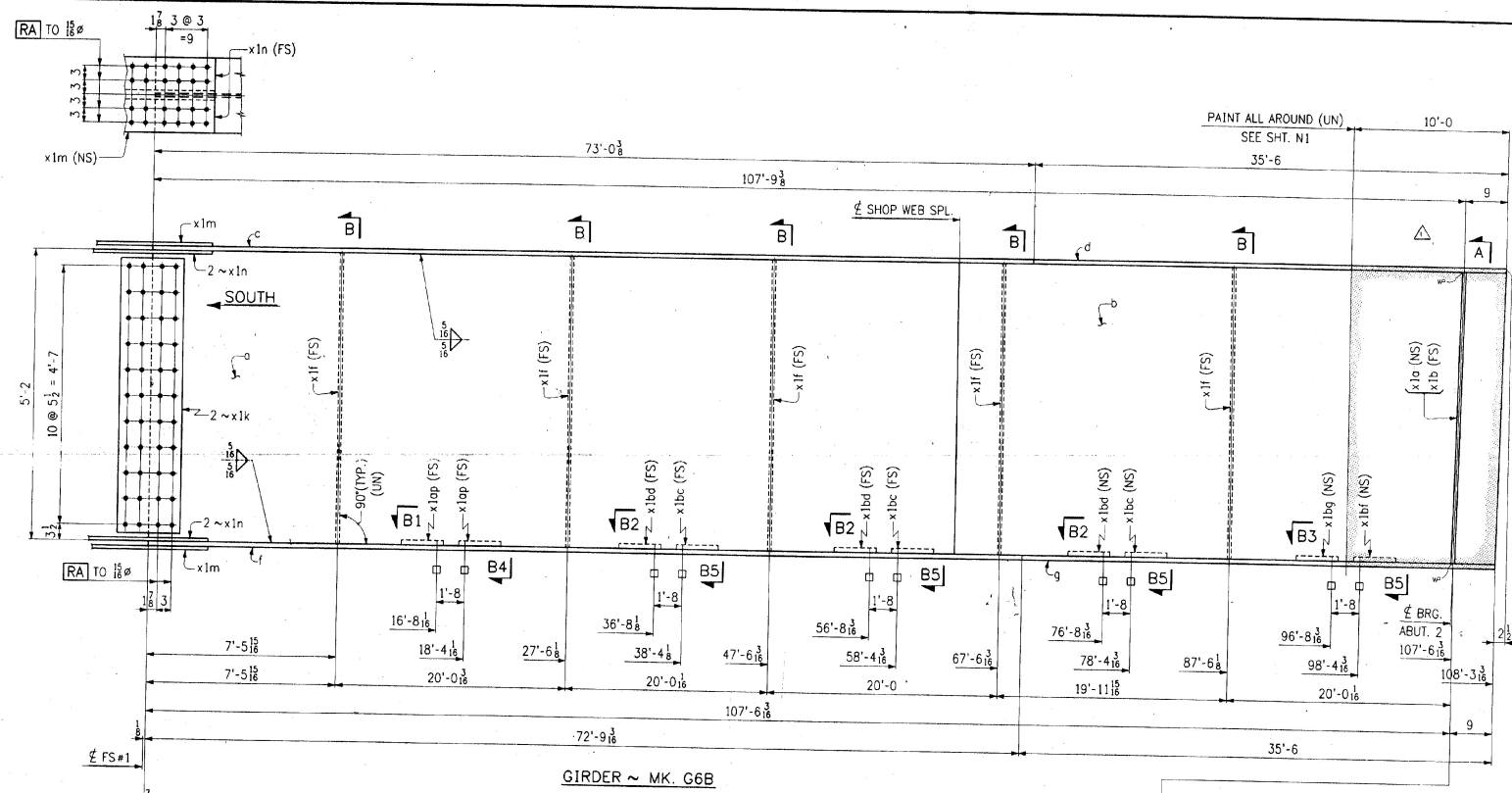
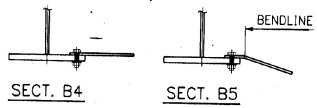


FED. ROAD DIST. NO.	STATE	FED. AC. PROJ. NO.
	VT	



PAINT LIGHT RUST PREVENTIVE COAT OF PRIMER (FS), EDGES & SHADED AREA (NS)

RECEIVED  
 DEC 27 1995  
 RESUBMIT BY DATE



WORK THIS DWG. WITH DWG. 24

CODE 30

NO.	REVISION	DATE
1	DELETED SECT. P: DESIGN CHANGE	5-20-94
HIGH STEEL STRUCTURES, INC.  1770 Hempstead Road, Lancaster, PA 17605-0008, Phone 717/299-5211 A Division of High Industries, Inc.		
GIRDER G6B		
U.S. ROUTE 7 OVER OTTER CREEK		
BRIDGE NO. 79		
TOWN OF WALLINGFORD, COUNTY OF RUTLAND		
STATE OF VERMONT		
AGENCY OF TRANSPORTATION		
PROJECT NO. BRS-0137(13)		
CONTRACTOR: J. A. McDONALD, INC.		
IN CHARGE: <b>abs</b> MADE PPF 2-3 CHK'D LD DATE 2-5-96		
CONTRACT NUMBER: VT-95367 DRAWING NUMBER: 23 OF 24		