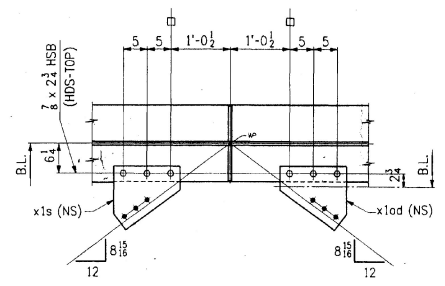
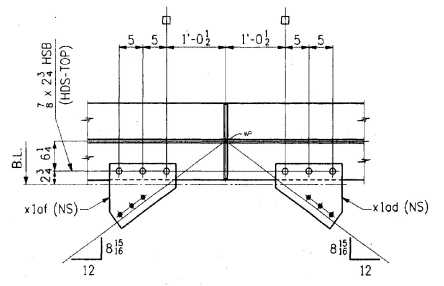


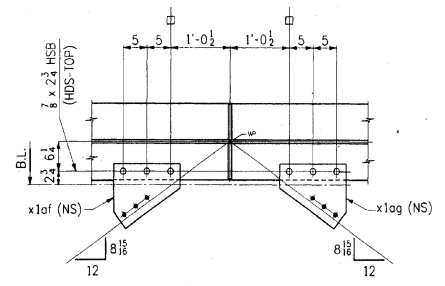
SECT. B1



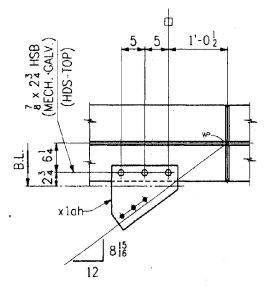
SECT. B2
(DEVELOPED FOR x1od ONLY)



SECT. B3
(DEVELOPED)



SECT. B4
(DEVELOPED)



SECT. B5

BILL OF MATERIAL						
NO.	MARK	DESCRIPTION	LENGTH	REMARKS	ITEM	QTY
ONE	G5B	GIRDER				
1	a	PL 62 x 3/8	65	6 1/2 (T)	2	4
1	b	PL 62 x 3/8	42	11 1/2 (T)	2	5
1	c	PL 16 x 1 1/2	73	0 1/2 (T)	2	13
1	d	PL 16 x 1 1/2	35	6 (T)	2	14
1	f	PL 16 x 1 1/2	72	9 1/2 (T)	2	13
1	g	PL 16 x 1 1/2	35	6 (T)	2	14
2	x1k	PL 58 x 1 1/2	1	1 (T)	3	6
2	x1m	PL 16 x 1 1/2	2	1 (T)	3	4
4	x1n	BAR 7 x 2	2	1 (T)	3	2
2	x1b	BAR 7 1/2 x 8	5	2	3	12
10	x1f	BAR 7 1/2 x 1 1/2	5	2	3	14
1	x1p	PL 14 x 3/8	1	0 3/8	3	15
2	x1s	PL 14 x 3/8	1	1 1/2	3	15
3	x1od	PL 14 x 3/8	1	1 1/2	3	15
3	x1of	PL 14 x 3/8	1	1 1/2	3	15
1	x1og	PL 14 x 3/8	1	1 1/2	3	15
1	x1oh	PL 14 x 3/8	1	1 1/2	3	15
30		2 # H.S. BOLTS	0	2 1/2	B1	5
30		WASHERS FOR 2 # H.S. BOLTS			B1	5
3		2 # H.S. BOLTS	0	2 1/2	B1	5
3		WASHERS FOR 2 # H.S. BOLTS			B1	5

TOTAL WEIGHT THIS DWG.
ITEM 506.55 = 29,225.28#

RECEIVED
DEC 27 1988
BY _____

SHOP NOTE
HOLES: 15/16" Ø (UN)
BOLTS: AS NOTED
PAINT: AS NOTED, SEE DWG. N1
FOR GENERAL SHOP NOTES, SEE DWG. N1.
FOR WEB CAMBER DIAGRAM, SEE DWG. WC1.

WORK THIS DWG. WITH DWG. 21

CHANGED "MILL" TO "GRIND"; BOLT SPECS.	2-21-96
NO. REVISION	DATE
HIGH STEEL STRUCTURES, INC. 1770 Hempstead Road, Lancaster, PA 17601-0008 Phone 717/299-5211	
GIRDER G5B	
U.S. ROUTE 7 OVER OTTER CREEK	
BRIDGE NO. 79	
TOWN OF WALLINGFORD, COUNTY OF RUTLAND	
STATE OF VERMONT	
AGENCY OF TRANSPORTATION	
PROJECT NO. BRS-0137(13)	
CONTRACTOR J. A. McDONALD, INC.	
DRAWING NO. 22 OF 24	