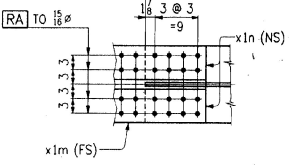
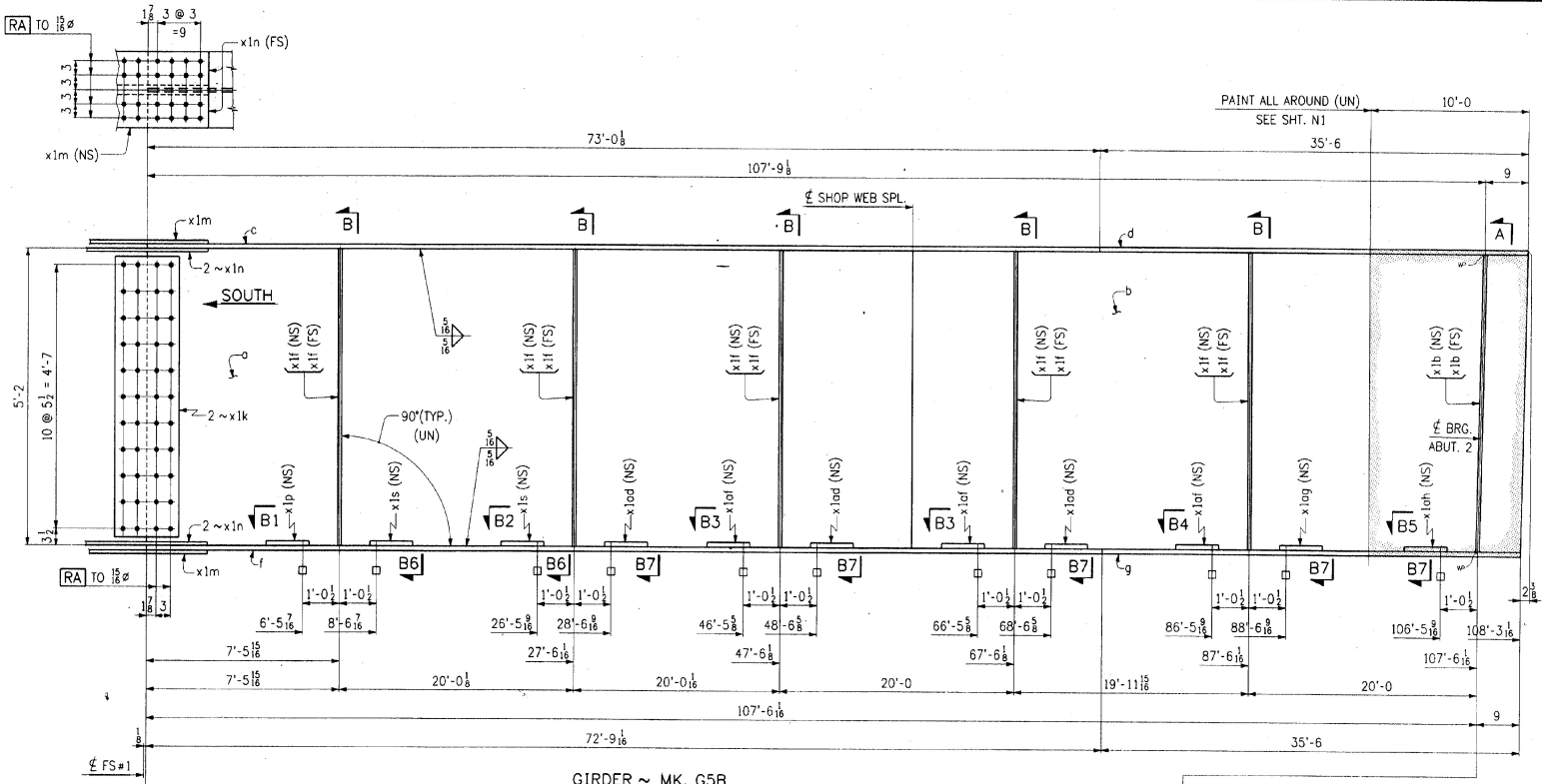
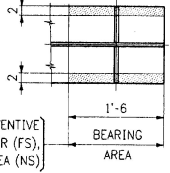


FED. ROAD DIST. NO.	STATE	FED. AID PROJ. NO.
	VT	

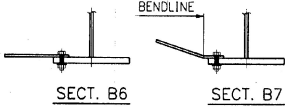


GIRDER ~ MK. G5B

PAINT LIGHT RUST PREVENTIVE
COAT OF PRIMER (FS),
EDGES & SHADED AREA (NS)




RECEIVED
DEC 27 1996
BY _____



WORK THIS DWG. WITH DWG. 18

CODE: 30

NO.	REVISION	DATE

HIGH STEEL STRUCTURES, INC.  1370 Hempstead Road
 Lancaster, PA 17605-2008 Phone 717/299-5211
 A Division of High Industries, Inc.

GIRDER G5B
 U.S. ROUTE 7 OVER OTTER CREEK
 BRIDGE NO. 79
 TOWN OF WALLINGFORD, COUNTY OF RUTLAND
 STATE OF VERMONT
 AGENCY OF TRANSPORTATION

STATE CONTRACT NO. PROJECT NO. BRS-0137(13)
 CONTRACTOR J. A. McDONALD, INC.
 IN CHARGE **abs** MADE PPP BY **LD** DATE 2-5-96
 CONTRACT NUMBER **VT-95367** DRAWING NUMBER 21 OF 24