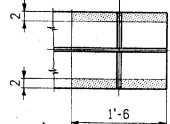


GIRDER ~ MK. G3B

PAINT LIGHT RUST PREVENTIVE  
COAT OF PRIMER (FS),  
EDGES & SHADED AREA (NS)



**SHOP NOTE**  
HOLES: 1/8\"/>

BILL OF MATERIAL					
NO.	MARK	DESCRIPTION	LENGTH	REMARKS	ITEM
ONE	G3B	GIRDER			
1	a	PL 62 x 3/8	65 5/8	(T)	
1	b	PL 62 x 3/8	42 11/8	(T)	
1	c	PL 16 x 1 1/8	72 11/8	(T)	
1	d	PL 16 x 1 1/8	35 6	(T)	
1	f	PL 16 x 1 1/8	72 8 1/4	(T)	
1	g	PL 16 x 1 1/8	35 6	(T)	
2	x1k	PL 58 x 3/8	1 1	(T)	
2	x1m	PL 16 x 3/8	2 1	(T)	
4	x1n	BAR 7 x 3/4	2 1	(T)	
2	x1b	BAR 7 1/2 x 7/8	5 2		
10	x1f	BAR 7 1/2 x 1 1/8	5 2		

TOTAL WEIGHT THIS DWG.  
ITEM 506.55 = 28,997.10#

REVISION	DATE
CHANGED "MILL" TO "GRIND"	2-21-96

**HIGH STEEL STRUCTURES, INC.**  
 1770 Hammonds Road  
 Lancaster, PA 17602-0008  
 Phone 717/298-5211  
 A Division of High Industries, Inc.

**GIRDER G3B**  
 U.S. ROUTE 7 OVER OTER CREEK  
 BRIDGE NO. 79  
 TOWN OF WALLINGFORD, COUNTY OF RUTLAND  
 STATE OF VERMONT  
 AGENCY OF TRANSPORTATION  
 PROJECT NO. BRS-0137(13)

STATE CONTRACT OR REF. NO. J. A. McDONALD, INC.  
 CONTRACTOR  
 IN CHARGE: abs MAKE SHOP BY: LD DATE: 2-3-96  
 CONTRACT NUMBER: VT-95367 DRAWING NUMBER: 19 OF 24