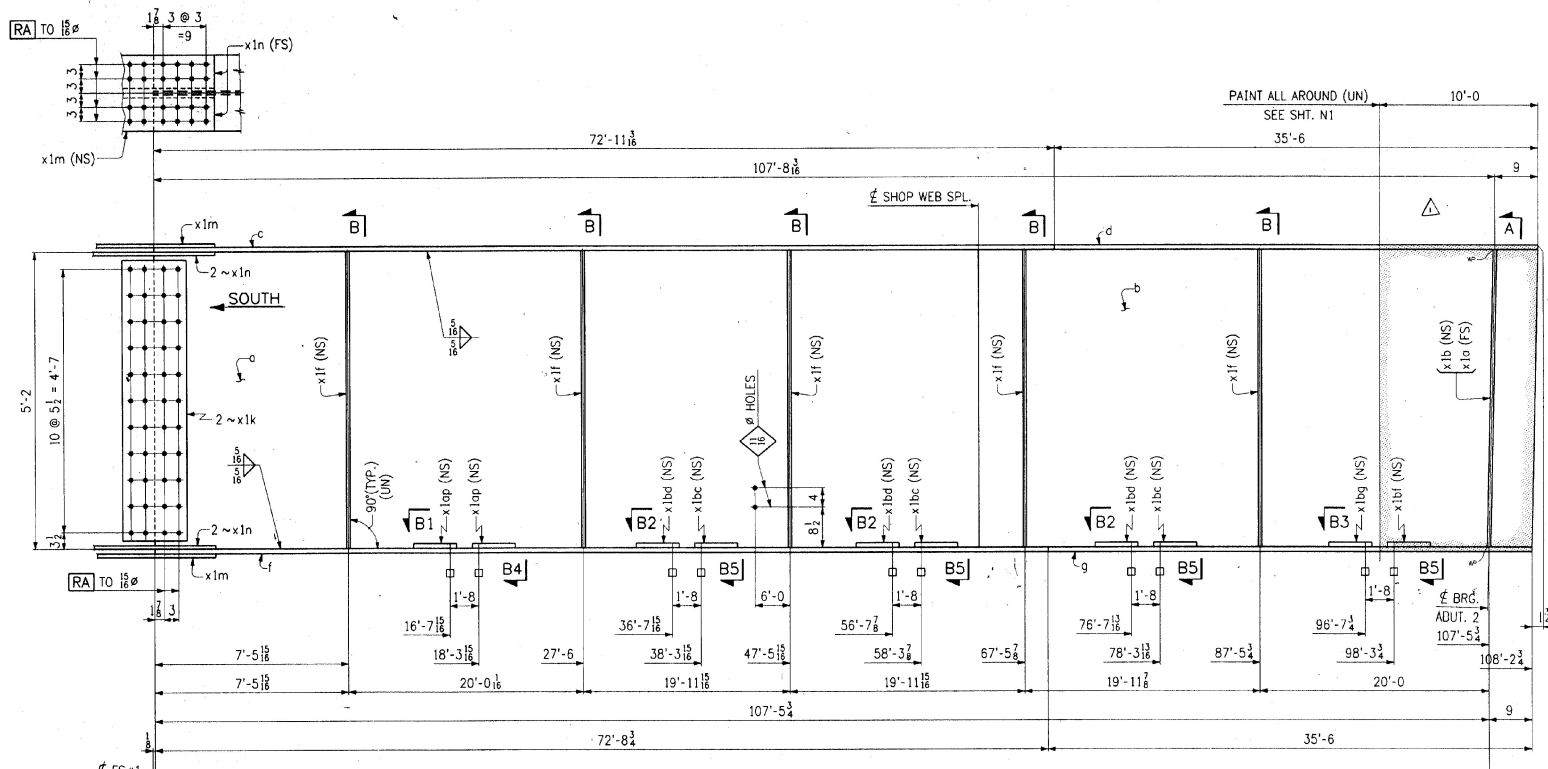
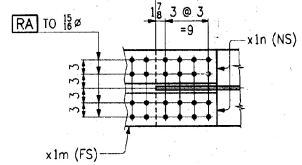


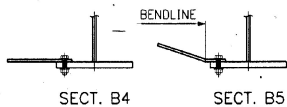
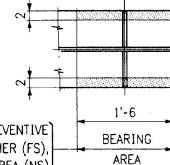
FED. ROAD DIST. NO.	STATE	FED. PROJ. NO.
	VT	



GIRDER ~ MK. G1B




PAINT LIGHT RUST PREVENTIVE
COAT OF PRIMER (FS).
EDGES & SHADED AREA (NS)



RECEIVED
DEC 27 1996
BY: _____

WORK THIS DWG. WITH DWG. 16

NO.	REVISION	DATE
1	DELETED SET. P = DESIGN CHANGE	5-20-94
HIGH STEEL STRUCTURES, INC.  1770 Hempstead Road, Lincoln, PA 15505-0008, Phone 717/299-5211		
GIRDER G1B		
U.S. ROUTE 7 OVER OTTER CREEK		
TOWN OF WALLINGFORD, COUNTY OF RUTLAND		
STATE OF VERMONT		
AGENCY OF TRANSPORTATION		
STATE CONTRACT OR REF. NO.	PROJECT NO. BRS-0137(13)	
CONTRACTOR	J. A. McDONALD, INC.	
IN CHARGE	abs	MADE PFP BY: LD DATE: 2-3-96
CONTRACT NUMBER	VT-95367	DRAWING NUMBER: 15 OF 24