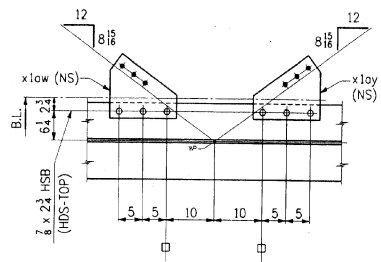
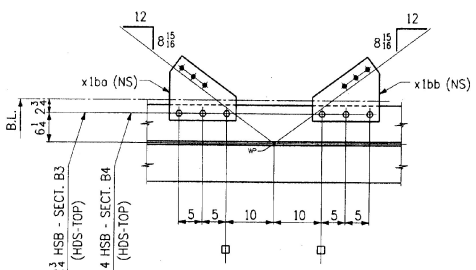


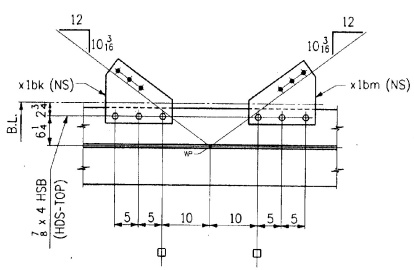
SECT. B1 (DEVELOPED)  
SECT. B9 (DEVELOPED)



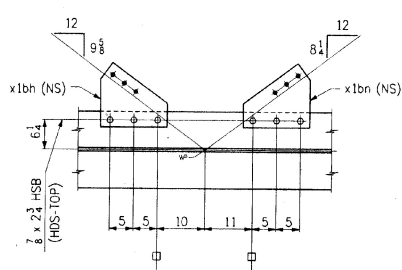
SECT. B2 (DEVELOPED)



SECT. B3 (DEVELOPED)  
SECT. B4 (DEVELOPED)



SECT. B5 (DEVELOPED)



SECT. B6


BILL OF MATERIAL						
NO.	MARK	DESCRIPTION	LENGTH	REMARKS	ITEM	QTY
1	a	PL 62 x 3/8	88 9	(T)		2
1	b	PL 62 x 3/8	62 0 1/2	(T)		2
1	c	PL 16 x 1 1/2	34 9	(T)		2
1	d	PL 16 x 1 1/2	62 0 1/2	(T)		2
1	f	PL 16 x 1 1/2	11 0	(T)		2
1	g	PL 16 x 2 1/2	26 9	(T)		2
1	h	PL 16 x 1 1/2	16 0 1/2	(T)		2
1	k	PL 16 x 1 1/2	34 9	(T)		2
1	m	PL 16 x 1 1/2	62 0 1/2	(T)		2
1	n	PL 16 x 1 1/2	11 0	(T)		2
1	p	PL 16 x 2 1/2	26 9	(T)		2
1	s	PL 16 x 1 1/2	16 3 3/8	(T)		2
2	x1c	BAR 7 1/2 x 3/8	5 2			2
2	x1d	BAR 7 1/2 x 3/8	5 2			2
6	x1f	BAR 7 1/2 x 1/2	5 2			2
2	x1os	PL 14 x 3/8	1 1 1/2	BENT		2
2	x1ot	PL 14 x 3/8	1 1 1/2	BENT		2
2	x1ow	PL 14 x 3/8	1 1 1/2	BENT		2
2	x1oy	PL 14 x 3/8	1 1 1/2	BENT		2
2	x1bo	PL 14 x 3/8	1 1 1/2	BENT		2
2	x1bb	PL 14 x 3/8	1 1 1/2	BENT		2
1	x1bk	PL 14 x 3/8	1 2 1/2	BENT		2
1	x1bm	PL 14 x 3/8	1 2 1/2	BENT		2
1	x1bh	PL 14 x 3/8	1 2 1/2	BENT		2
1	x1bn	PL 14 x 3/8	1 1 1/2	BENT		2
1	x1g+	BAR 2 1/8 x 1/4	0 10 1/2			2
1	x1h+	BAR 4 1/8 x 1/4	0 10 1/2			2
33		3/8 # H.S. BOLTS	0 2 1/2			2
12		1/2 # H.S. BOLTS	0 4			2
45		WASHERS FOR 3/8 # H.S. BOLTS				2
3		3/8 # H.S. BOLTS	0 4	335-1 W/1 HSB3 200 04 HEX NUT GALV		2
3		WASHERS FOR 3/8 # H.S. BOLTS		F436 GALV.		2

TOTAL WEIGHT THIS DWG.  
ITEM 506.55 = 40,805.99#

RECEIVED  
DEC 27 1995  
RESUBMITTED BY

SHOP NOTE  
HOLES: 1/8" (UN)  
BOLTS: AS NOTED  
PAINT: AS NOTED, SEE DWG. N1  
FOR GENERAL SHOP NOTES, SEE DWG. N1.  
FOR WEB CAMBER DIAGRAM, SEE DWG. WC1.

WORK THIS DWG. WITH DWG. 13

NO.	REVISION	DATE
3	CHANGED "MILL" TO "GRIND"; BOLT SPECS.	2-21-96
HIGH STEEL STRUCTURES, INC.  1770 Hempstead Road Lancaster, PA 17605-0008 Phone 717-298-5211 A Division of High Industries, Inc.		
GIRDER G6A		
U.S. ROUTE 7 OVER OTTER CREEK		
BRIDGE NO. 79		
TOWN OF WALLINGFORD, COUNTY OF RUTLAND		
STATE OF VERMONT		
AGENCY OF TRANSPORTATION		
PROJECT NO. BR5-0137(13)		
CONTRACTOR J. A. McDONALD, INC.		
IN CHARGE	MADE BY	CHK'D BY
abs	PPF	LD
CONTRACT NO. VT-95367	DRAWING NO.	DATE
		2-2-96
		14 OF 24