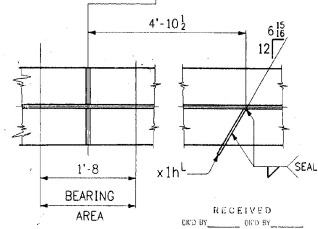
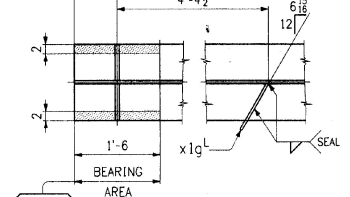
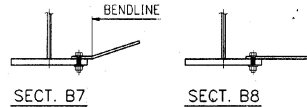


GIRDER ~ MK. G6A



PAINT LIGHT RUST PREVENTIVE
COAT OF PRIMER (FS).
EDGES & SHADED AREA (NS)



RECEIVED
DEC 27 1996
BY: [Signature]

△		
△	DELETED SECT. P: DESIGN CHANGE	5-20-96
NO.	REVISION	DATE
HIGH STEEL STRUCTURES, INC. 1770 Hempstead Road, Lancaster, PA 17603-0008, Phone 717-299-5211. A Division of High Industries.		
GIRDER		G6A
U.S. ROUTE 7 OVER OTTER CREEK		
TOWN OF WALLINGFORD, COUNTY OF RUTLAND		
STATE OF VERMONT		
AGENCY OF TRANSPORTATION		
STATE CONTRACT OR REF. NO.	PROJECT NO. BRS-0137(13)	
CONTRACTOR	J. A. McDONALD, INC.	BRIDGE NO. 79
IN CHARGE	abg	DATE: 2-2-96
CONTRACT NUMBER	VT-95367	DRAWING NUMBER: 13 OF 24

WORK THIS DWG. WITH DWG. 14

CODE: 30