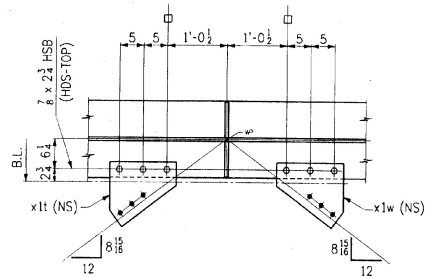
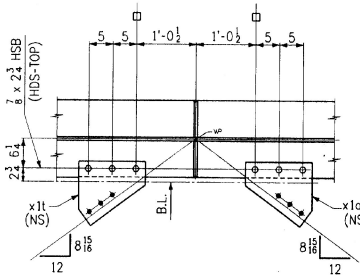


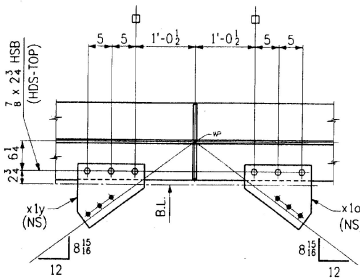
SECT. B1 (DEVELOPED)



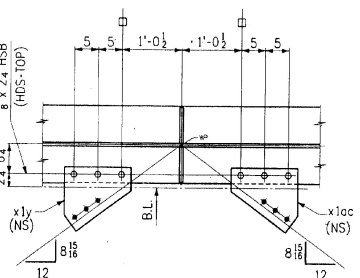
SECT. B2 (DEVELOPED)



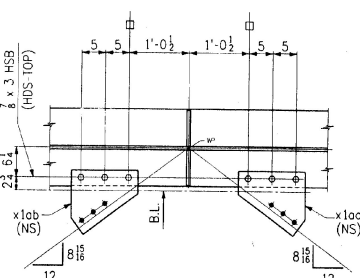
SECT. B3 (DEVELOPED)



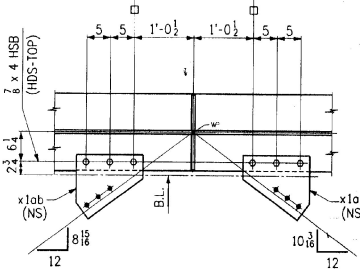
SECT. B4 (DEVELOPED)



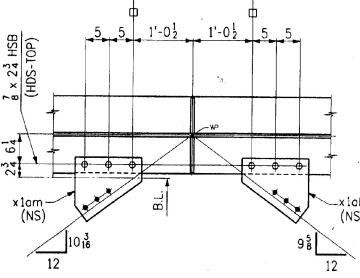
SECT. B5 (DEVELOPED)



SECT. B6 (DEVELOPED)



SECT. B7 (DEVELOPED)



SECT. B8 (DEVELOPED)

| BILL OF MATERIAL | | | | | |
|------------------|------|------------------------------|--------------|-------------------------------------|------|
| NO. | MARK | DESCRIPTION | LENGTH | REMARKS | ITEM |
| ONE | CSA | GIRDER | | | |
| 1 | o | PL 62 x 3/8 | 88 9 (T) | | |
| 1 | b | PL 62 x 3/8 | 62 0 3/8 (T) | | |
| 1 | c | PL 16 x 1/8 | 34 9 (T) | | |
| 1 | d | PL 16 x 1/8 | 52 0 1/8 (T) | | |
| 1 | f | PL 16 x 1 1/4 | 11 0 (T) | | |
| 1 | g | PL 16 x 2 1/8 | 26 9 (T) | | |
| 1 | h | PL 16 x 1 1/2 | 16 0 1/2 (T) | | |
| 1 | k | PL 16 x 1/8 | 34 9 (T) | | |
| 1 | m | PL 16 x 1/8 | 62 0 3/8 (T) | | |
| 1 | n | PL 16 x 1 1/4 | 11 0 (T) | | |
| 1 | p | PL 16 x 2 1/8 | 26 9 (T) | | |
| 1 | s | PL 16 x 1 1/2 | 16 3/8 (T) | | |
| 4 | x1b | BAR 7 1/2 x 1/2 | 5 2 | | |
| 12 | x1f | BAR 7 1/2 x 1/2 | 5 2 | | |
| 2 | x1w | PL 14 x 3/8 | 1 1 1/2 | BENT | |
| 2 | x1t | PL 14 x 3/8 | 1 1 1/2 | BENT | |
| 2 | x1y | PL 14 x 3/8 | 1 1 1/2 | BENT | |
| 2 | x1ac | PL 14 x 3/8 | 1 1 1/2 | BENT | |
| 2 | x1oc | PL 14 x 3/8 | 1 1 1/2 | BENT | |
| 2 | x1ab | PL 14 x 3/8 | 1 1 1/2 | BENT | |
| 1 | x1an | PL 14 x 3/8 | 1 2 1/2 | BENT | |
| 1 | x1am | PL 14 x 3/8 | 1 2 1/2 | BENT | |
| 1 | x1ak | PL 14 x 3/8 | 1 2 1/2 | BENT | |
| 30 | | 3/8 # H.S. BOLTS | 0 2 1/2 | | |
| 6 | | 3/8 # H.S. BOLTS | 0 3 | | |
| 6 | | 3/8 # H.S. BOLTS | 0 4 | | |
| 42 | | WASHERS FOR 3/8 # H.S. BOLTS | | | |
| 3 | | 1/2 # H.S. BOLTS | 0 2 1/2 | AS 30-1 W/1 ASB3 OR CH H2 1007 GALV | |
| 3 | | WASHERS FOR 1/2 # H.S. BOLTS | | F436 GALV. | |

TOTAL WEIGHT THIS DWG. ITEM 506.55 = 41,173.65 #

RECEIVED
 CRD BY: _____
 DEC 27 1996
 REQUESTED BY: _____
 APPROVED DATE: _____

SHOP NOTE
 HOLES: 1/8" (UN)
 BOLTS: AS NOTED
 PAINT: AS NOTED, SEE DWG. N1
 FOR GENERAL SHOP NOTES, SEE DWG. N1.
 FOR WEB CAMBER DIAGRAM, SEE DWG. WC1.

WORK THIS DWG. WITH DWG. 11

| | |
|--|----------------|
| CHANGED "MILL" TO "GRIND"; BOLT SPECS. | 2-21-96 |
| NO. _____ | REVISION _____ |
| NO. _____ | DATE _____ |

HIGH STEEL STRUCTURES, INC.
 1770 Hemlock Road
 Lancaster, PA 17603-0008
 Phone 717/299-5211
 A Division of High Industries, Inc.

GIRDER G5A
 U.S. ROUTE 7 OVER OTTER CREEK
 BRIDGE NO. 79
 TOWN OF WALLINGFORD, COUNTY OF RUTLAND
 STATE OF VERMONT
 AGENCY OF TRANSPORTATION

STATE CONTRACT PROJECT NO. BRS-0137(13)
 OR REF. NO. CONTRACTOR J. A. McDONALD, INC.
 IN CHARGE: **abs** MADE PPP-1 CHD BY: **LD** DATE: 2-2-96
 DRAWING NUMBER: **VT-95367**

CODE: 30 DRAWING NUMBER: **12 OF 24**