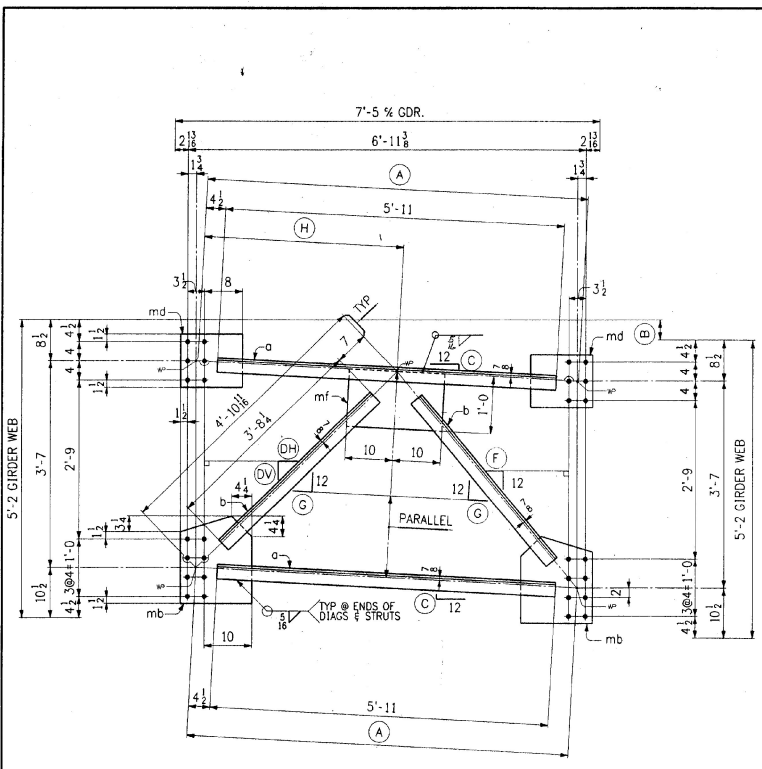


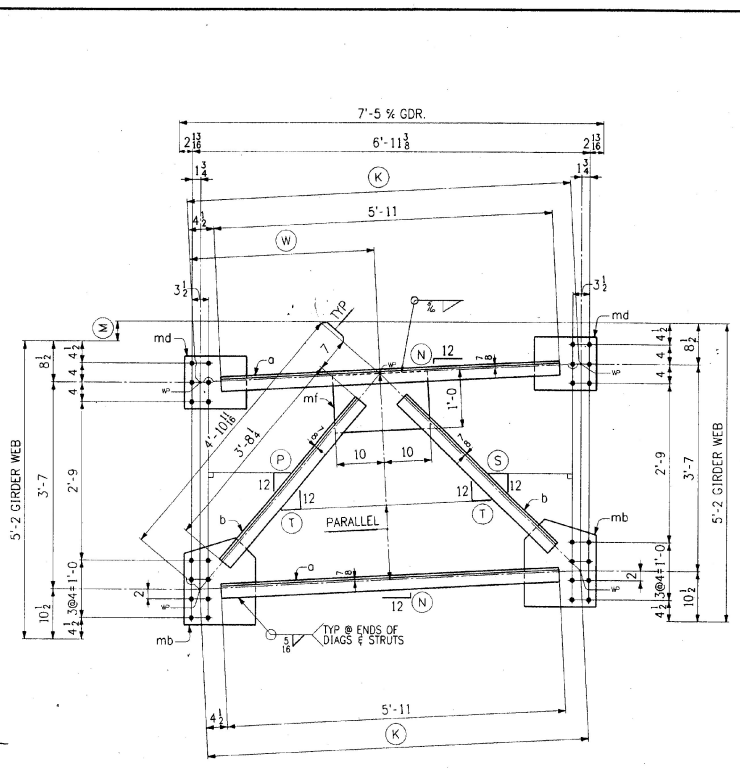
BILL OF MATERIAL						
NO.	MARK	DESCRIPTION	LENGTH	REMARKS	ITEM	QTY
5	CF4	CROSSFRAMES				252.46
5	CF5	CROSSFRAMES				
5	CF6	CROSSFRAMES				
5	CF7	CROSSFRAMES				
5	CF8	CROSSFRAMES				
5	CF9	CROSSFRAMES				
5	CF10	CROSSFRAMES				
5	CF11	CROSSFRAMES				
5	CF12	CROSSFRAMES				
5	CF13	CROSSFRAMES				
5	CF14	CROSSFRAMES				
110	o	∠3 x 3 x 3/8	5	11		42.40
110	b	∠3 x 3 x 3/8	3	84		24.55
110	md	PL 11 x 3/8	1	1		18.11
110	mb	PL 15 x 3/8	1	64		28.11
55	mf	PL 12 x 3/8	1	8		25.52

TOTAL WEIGHT THIS DWG
ITEM 506.55 = 13,885.30 #



INT. CROSSFRAMES

MARK	A	B	C	DH	DV	F	G	H
CF4	6'-8	4 3/8	6 3/8	12	11 5/8	10 1/8	11 1/8	3'-6 1/8
CF5	6'-7 1/8	3 3/8	5 1/2	12	11 1/8	10 1/4	11 1/8	3'-5 1/8
CF6	6'-7 1/8	2 3/4	7 1/8	11 1/8	12	10 1/8	11 1/8	3'-5 7/8
CF7	6'-7 1/8	2 1/8	5 5/8	11 1/4	12	10 1/8	11 1/8	3'-5 5/8
CF8	6'-7 1/8	1 1/2	4 1/4	11 1/8	12	10 1/4	11 1/8	3'-4 1/4
CF9	6'-7 1/8	3/8	1 1/8	11 1/4	12	11 1/8	11 1/8	3'-4 5/8



INT. CROSSFRAMES

MARK	K	M	N	P	S	T	W
CF10	6'-7 1/8	4	1 1/8	11 1/8	11 1/8	11 1/8	3'-3 1/8
CF11	6'-7 1/8	2 1/2	1 1/8	10 1/8	11 1/8	11 1/8	3'-3 3/8
CF12	6'-7 1/8	1 1/2	1 1/4	10 1/4	11 1/8	11 1/8	3'-3 3/8
CF13	6'-7 1/8	2	5/8	10 5/8	11 1/8	11 1/8	3'-2 7/8
CF14	6'-7 1/8	2 1/4	7/8	10 7/8	11 1/8	11 1/8	3'-2 1/2

SHOP NOTE

HOLES: 15/16 Ø
BOLTS: NONE
PAINT: NONE
FOR GENERAL SHOP NOTES, SEE DWG. N1.

RECEIVED
DEC 27 1996
APPROVED BY: _____ DATE: _____

NO.	REVISION	DATE

HIGH STEEL STRUCTURES, INC. 1770 Hemlock Road, Lancaster, PA 17602-0008, Phone 717/299-5211

CROSSFRAMES (INT)
U.S. ROUTE 7 OVER OTTER CREEK
BRIDGE NO. 79
TOWN OF WALLINGFORD, COUNTY OF RUTLAND
STATE OF VERMONT
AGENCY OF TRANSPORTATION
PROJECT NO. BRS-0137(13)
CONTRACTOR: J. A. McDONALD, INC.
IN CHARGE: abs MADE PFF 1-22 CHK'D BY: _____ DATE: 1-28-96
CONTRACT NUMBER: VT-95367 DRAWING NUMBER: 4 OF 24