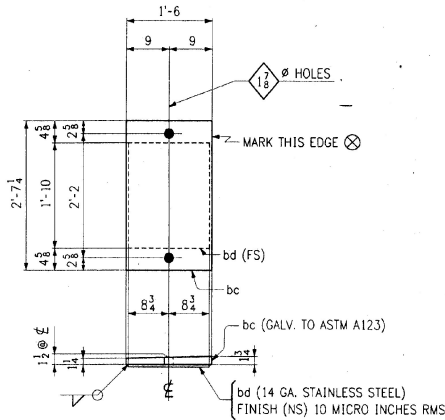
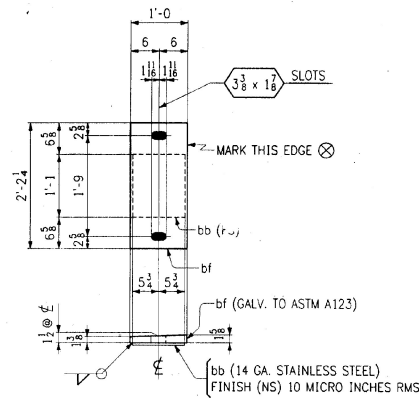


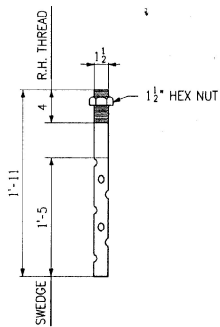
SOLE PLATES ~ MK. SP1
(ABUT. 1)



SOLE PLATES ~ MK. SP2
(PIER)



SOLE PLATES ~ MK. SP3
(ABUT. 2)



ANCHOR BOLTS ~ MK. AB1
(GALV. A153)
CODE: P

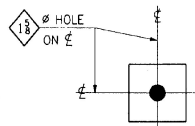


PLATE WASHERS ~ MK. W1
(ABUT.) (GALV. A153)

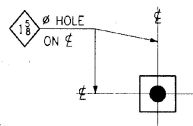
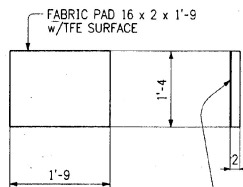
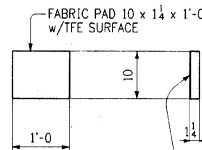


PLATE WASHERS ~ MK. W2
(PIER) (GALV. A153)



FABRIC PADS ~ EB1
(FIX) CODE: P



FABRIC PADS ~ EB2
(EXP.) CODE: P

Rec'd
01-13-97
7

FED. ROAD DIST. NO.		STATE		FED. PROJ. NO.	
VT					
BILL OF MATERIAL					
NO.	MARK	DESCRIPTION	LENGTH	REMARKS	ITEM WEIGHT
6	SP1	SOLE PLATE			137.15
6	bo	PL 12 x (11 1/2 x 1 1/2)	2	24 REVELED SOLE PLATE M270-36	139.98
6	bb	PL 11 1/2 x 14GA	1	1 STAINLESS STEEL ASTM A240, TYPE 304	8.17
6	SP2	SOLE PLATE			217.25
6	bc	PL 18 x (13 x 14)	2	74 REVELED SOLE PLATE M270-36	239.94
6	bd	PL 17 1/2 x 14GA	1	10 STAINLESS STEEL ASTM A240, TYPE 304	8.14
6	SP3	SOLE PLATE			131.15
6	bf	PL 12 x (13 x 1 1/2)	2	24 REVELED SOLE PLATE M270-36	133.98
6	bb	PL 11 1/2 x 14GA	1	1 STAINLESS STEEL ASTM A240, TYPE 304	8.17
ANCHOR BOLTS					
36	AB1	1 1/2\"/>			

TOTAL WEIGHT THIS DWG.
ITEM 531.10 = 3,924.60

RECEIVED
DEC 27 1996

SHOP NOTE
HOLES: AS NOTED
BOLTS: NONE
PAINT: NONE
FOR GENERAL SHOP NOTES, SEE DWG. N1.

NO.	REVISION	DATE
HIGH STEEL STRUCTURES, INC.		
1770 Hempstead Road Lancaster, PA 17603-0008 Phone 717/299-5211		
A Division of High Industries, Inc.		
BEARINGS		
U.S. ROUTE 7 OVER OTTER CREEK		
BRIDGE NO. 75		
TOWN OF WALLINGFORD, COUNTY OF RUTLAND		
STATE OF VERMONT		
AGENCY OF TRANSPORTATION		
PROJECT NO. BRS-0137(13)		
CONTRACTOR J. A. McDONALD, INC.		
IN CHARGE: abs	DATE: 1-31-96	
BY: JCC	DATE: 1-31-96	
CONTRACT NUMBER: VT-95367	DRAWING NUMBER: 1 OF 24	