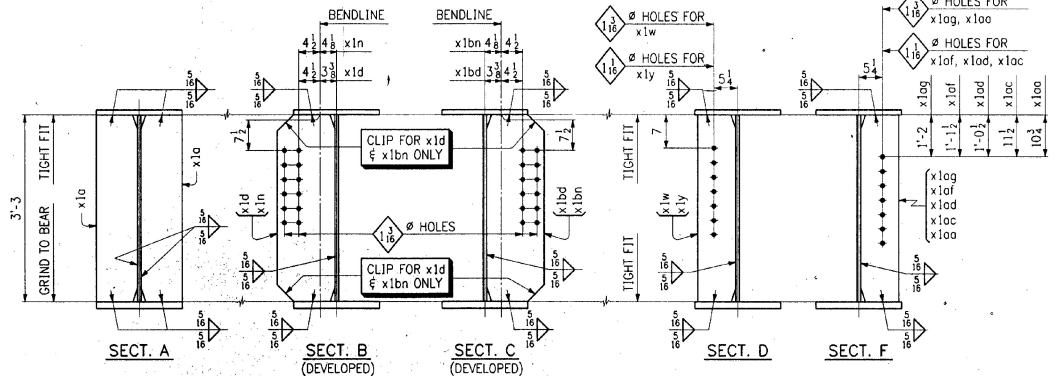
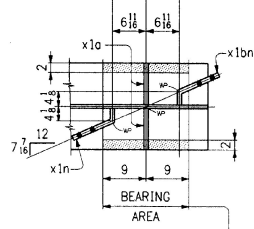


FED. ROAD DIST. NO.		STATE	FED. AID PROJ. NO.		
		VT			
BILL OF MATERIAL					
NO.	MARK	DESCRIPTION	LENGTH	REMARKS	ITEM
1	a	PL 39 x 1/2	32 3/8	(T)	
1	b	PL 39 x 1/2	69 8/8	(T)	
1	c	PL 18 x 1	68	4	
1	d	PL 18 x 1	33 7/8		
1	f	PL 18 x 1 1/2	20	11 1/8	(T)
1	g	PL 18 x 2	60	0	(T)
1	h	PL 18 x 1 1/2	20	11 1/4	(T)
4	x1a	PL 8 1/2 x 7/8	3	3	
1	x1d	PL 39 1/2 x 1/2	1	0 1/2	BENT
1	x1n	PL 39 1/2 x 1/2	1	0 1/2	BENT
1	x1bd	PL 39 1/2 x 1/2	1	0 1/2	BENT
1	x1bn	PL 39 1/2 x 1/2	1	0 1/2	BENT
2	x1w	BAR 8 x 1/2	3	3	
3	x1y	BAR 8 x 1/2	3	3	
1	x1oo	BAR 8 x 1/2	3	3	
1	x1oc	BAR 8 x 1/2	3	3	
1	x1od	BAR 8 x 1/2	3	3	
1	x1ol	BAR 8 x 1/2	3	3	
1	x1og	BAR 8 x 1/2	3	3	

TOTAL WEIGHT THIS DWG.
ITEM 506.55 = 24,948.88



SHOP NOTE
HOLES: 1/16" (UN)
BOLTS: NONE
PAINT: AS NOTED, SEE DWG. N1
FOR GENERAL SHOP NOTES, SEE DWG. N1.
FOR WEB CAMBER DIAGRAM, SEE DWG. WC1.

NO.	REVISION	DATE
HIGH STEEL STRUCTURES, INC. 1770 Hempstead Road Lancaster, Pa. 17606-0008 Phone 717/299-5211		
GIRDER G3A		
U.S. ROUTE 7 OVER RAILROAD		
BRIDGE NO. 80		
TOWN OF WALLINGFORD, COUNTY OF RUTLAND		
STATE OF VERMONT		
AGENCY OF TRANSPORTATION		
PROJECT NO. BRS-0137(13)		
CONTRACTOR J.A. McDONALD, INC.		
DATE: 2-20-96		
IN CHARGE abs MADE PFP 2:11 CHK'D FM		
CONTRACT NUMBER VT-95368 DRAWING NUMBER 6 OF 9		