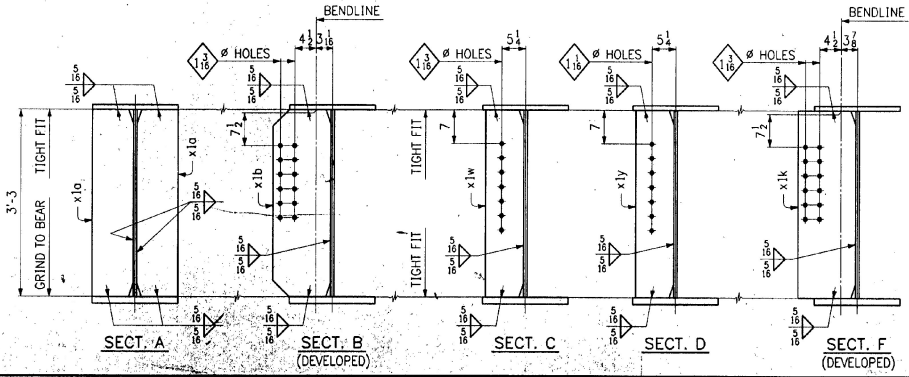
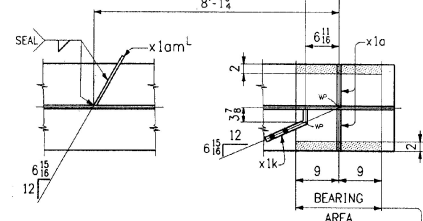


|                     |       |                |
|---------------------|-------|----------------|
| FED. ROAD DIST. NO. | STATE | FED. PROJ. NO. |
|                     | VT    |                |


| BILL OF MATERIAL |       |                 |          |         |      |
|------------------|-------|-----------------|----------|---------|------|
| NO.              | MARK  | DESCRIPTION     | LENGTH   | REMARKS | ITEM |
| ONE              | GIA   | GIRDER          |          |         |      |
| 1                | a     | PL 39 x 1/2     | 32 2 1/2 | (7)     |      |
| 1                | b     | PL 39 x 1/2     | 68 9 1/2 | (1)     |      |
| 1                | c     | PL 18 x 1       | 68       | 4       |      |
| 1                | d     | PL 18 x 1       | 33       | 7 1/2   |      |
| 1                | f     | PL 18 x 1 1/2   | 20       | 11 1/2  | (7)  |
| 1                | g     | PL 18 x 2       | 60       | 0       | (7)  |
| 1                | h     | PL 18 x 1 1/2   | 20       | 11 1/2  | (1)  |
| 4                | x1a   | PL 8 1/2 x 2    | 3        | 3       |      |
| 1                | x1b   | PL 39 1/2 x 1/2 | 0        | 11 1/2  | BENT |
| 1                | x1k   | PL 39 1/2 x 1/2 | 1        | 0 1/2   | BENT |
| 2                | x1w   | BAR 8 x 1/2     | 3        | 3       |      |
| 3                | x1y   | BAR 8 x 1/2     | 3        | 3       |      |
| 1                | x1om1 | BAR 3 1/2 x 1/4 | 1        | 0 1/2   |      |

TOTAL WEIGHT THIS DWG.  
ITEM 506.55 = 24,587.60



**SHOP NOTE**  
HOLES: 1/8" Ø (UN)  
BOLTS: NONE  
PAINT: AS NOTED, SEE DWG. N1  
FOR GENERAL SHOP NOTES, SEE DWG. N1.  
FOR WEB CAMBER DIAGRAM, SEE DWG. WC1.

RECEIVED  
DEC 27 1993  
BY: \_\_\_\_\_ DATE: \_\_\_\_\_

|   |                      |                        |
|---|----------------------|------------------------|
| NO.   | REVISION             | DATE                   |
|   |                      |                        |
| HIGH STEEL STRUCTURES, INC.  |                      |                        |
| 1770 Hempstead Road<br>Lancaster, PA 17605-0008<br>Phone 717/299-5211   |                      |                        |
| A Division of High Industries, Inc.   |                      |                        |
| GIRDER GIA  |                      |                        |
| U.S. ROUTE 7 OVER RAILROAD  |                      |                        |
| BRIDGE NO. 80   |                      |                        |
| TOWN OF WALLINGFORD, COUNTY OF RUTLAND  |                      |                        |
| STATE OF VERMONT  |                      |                        |
| AGENCY OF TRANSPORTATION  |                      |                        |
| PROJECT NO. BRS-0137(13)  |                      |                        |
| STATE CONTRACT OR REF. NO.  |                      |                        |
| CONTRACTOR  | J. A. McDONALD, INC. |                        |
| IN CHARGE   | ctbs                 | DATE: 2-20-96          |
| CONTRACT NUMBER   | VT-95368             | DRAWING NUMBER: 4 OF 9 |

CODE: 30