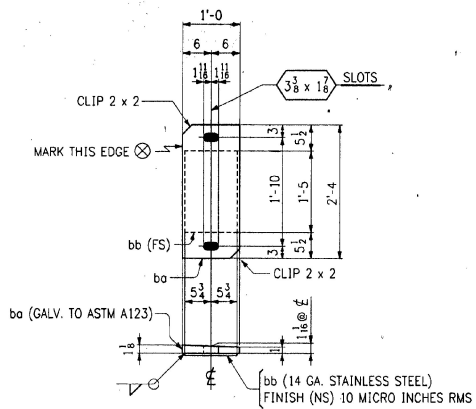
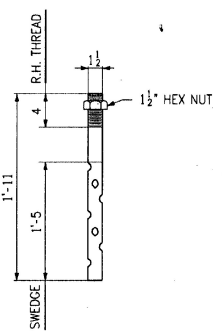


SOLE PLATES ~ MK. SP1
(ABUT. 1 - FIX) (GALV. A123)



SOLE PLATES ~ MK. SP2
(ABUT. 2 - EXP.)



ANCHOR BOLTS ~ MK. AB1
(GALV. A153)
[CODE: P]

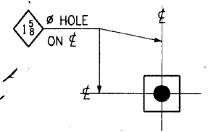


PLATE WASHERS ~ MK. W1
(ABUT. 1) (GALV. A153)
[CODE: P]

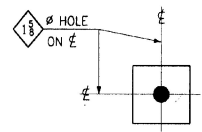
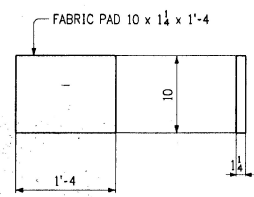
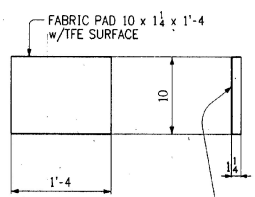


PLATE WASHERS ~ MK. W2
(ABUT. 2) (GALV. A153)
[CODE: P]



FABRIC PADS ~ EB1
(FIX) [CODE: P]



FABRIC PADS ~ EB2
(EXP.) [CODE: P]

.7FE PER VT STD. SPECS 731.04 BONDED TO FABRIC PAD

Rec'd.
01-13-97
[Signature]

BILL OF MATERIAL						
NO.	MARK	DESCRIPTION	LENGTH	REMARKS	ITEM WEIGHT	
6	SP1	PL 12 x (1 1/8 x 1)	2	4	BEVELED SOLE PLATE M270-36	1.00
6	SP2	SOLE PLATE				1.00
6	bo	PL 12 x (1 1/8 x 1)	2	4	BEVELED SOLE PLATE M270-36	1.00
6	bb	PL 1 1/2 x 14GA	1	5	STAINLESS STEEL ASTM A242, TYPE 304	1.19
ANCHOR BOLTS						
24	AB1	1 1/2" SWEDGE BOLTS	1	11	M270-36 W/ 1 A563 GR. A STD. HEX NUT, GALV. A153	1.44
WASHERS						
12	W1	BAR 2 1/2 x 3/8	0	2 1/2	M270-36, GALV. A153	0.67
12	W2	BAR 3 1/2 x 3/8	0	3 1/2	M270-36, GALV. A153	1.50
FABRIC PADS						
6	EB1	PAD 10 x 1 1/4	1	4	PER VERMONT STD. SPECS SECT. 731.01 (RM)	1.13
6	EB2	PAD 10 x 1 1/4	1	4	PER VERMONT STD. SPECS SECT. 731.01 (RM)	1.13

TOTAL WEIGHT THIS DWG.
ITEM 531.10 - 1686.66

RECEIVED
ORD BY _____ CRD BY _____
DEC 27 1996
RESUBMIT BY _____ APPROVED BY _____ DATE _____

SHOP NOTE
HOLES: AS NOTED
BOLTS: NONE
PAINT: NONE
FOR GENERAL SHOP NOTES, SEE DWG. N1.

NO.	REVISION	DATE
HIGH STEEL STRUCTURES, INC. 1770 HEMPSTEAD ROAD LANCASTER, PA 17603-0008 Phone 717/298-5211 A Division of High Industries, Inc.		
BEARINGS		
U.S. ROUTE 7 OVER RAILROAD		
BRIDGE NO. 80		
TOWN OF WASHINGTON, COUNTY OF RUTLAND		
STATE OF VERMONT		
AGENCY OF TRANSPORTATION		
STATE CONTRACT OR REF. NO.	PROJECT NO. BRS-0137(13)	
CONTRACTOR	J. A. McDONALD, INC.	
IN CHARGE	MADE BY	CHECKED BY
BY	JCC	BY
DATE	DATE: 2-20-96	
CONTRACT NUMBER	VT-95368	DRAWING NUMBER
		1 OF 9