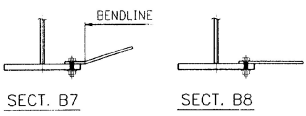
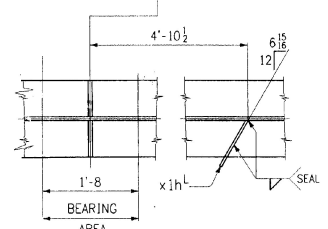
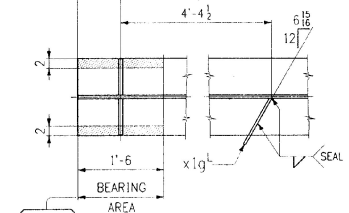


GIRDER ~ MK. G6A



PAINT LIGHT RUST PREVENTIVE
COAT OF PRIMER (FS)
EDGES & SHADED AREA (NS)

SHOP DRAWING REVIEW

REVIEWED FOR GENERAL COMPLIANCE WITH
CONTRACT DOCUMENTS BY PROFESSIONAL ENGINEER
DATE: 6/10/96 BY: J.A.M.

APPROVED AS NOTED
DATE: 6/10/96 BY: J.A.M.

DATE: 6/10/96 BY: J.A.M.

RECEIVED	DATE
BY: [Signature]	MAY 27 1996
REVISION	DATE
NO.	REVISION
NO.	REVISION
NO.	REVISION

HIGH STEEL STRUCTURES, INC.	
1770 Hempstead Road, Lancaster, Pa. 17603-0008 Phone 717/299-5211	
A Division of High Industries, Inc.	
GIRDER G6A	
U.S. ROUTE 7 OVER OTTER CREEK	
BRIDGE NO. 79	
TOWN OF WALLINGFORD, COUNTY OF RUTLAND	
STATE OF VERMONT	
AGENCY OF TRANSPORTATION	
STATE CONTRACT NO. BRS-0137(13)	MAY 9 11996
CONTRACTOR J. A. McDONALD, INC.	
IN CHARGE: abs	MADE PPF 2-1, CHK'D BY L.D. DATE 2-2-96
CONTRACT NUMBER: VT-95367	DRAWING NUMBER: 13 OF 24

WORK THIS DWG. WITH DWG. 14

CODE: 30

400-9

05A-400