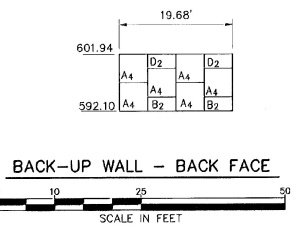


LENGTH OF 50 X 4 MM REINFORCING STRIPS AND MAXIMUM APPLIED WALL BEARING PRESSURE.

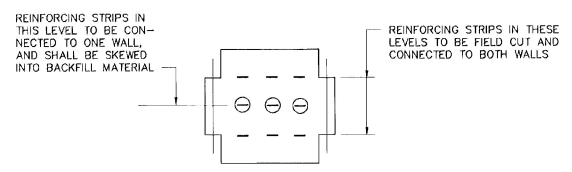
WALL NO. 3

WALL NO. 4

ELEVATION - FRONT FACE - ABUTMENT NO. 2
SCALE IN FEET



BACK-UP WALL - BACK FACE



PANEL WITH 9 TIE STRIPS
NOT TO SCALE

- NOTES:**
- FOR BACK-UP WALL LOCATION, SEE ABUT. NO. 2 LAY-OUT SHEET BR228.
 - LEVELING PAD NOT REQUIRED BENEATH THE BACK-UP WALL.

- NOTES:**
- LENGTH OF LEVELING PAD IS BASED ON INDIVIDUAL PANEL WIDTHS. C OF PIN TO C OF PIN. USE STEP DETAIL ON SHEET BR230 TO DETERMINE THE ACTUAL LEVELING PAD STEP LOCATION.
 - FOR COPING DETAILS, SEE SHEET BR230 WALL ELEVATIONS APPLIED AT TOP OF COPING.
 - FOR TYPICAL SECTION THROUGH ROADWAY AND WALL LOCATIONS, SEE CONTRACT PLANS.
 - FOR GENERAL NOTES, SEE SHEET BR225.
- KEY:
 PANEL NAME $\frac{A5}{}$ NO. OF TIE STRIPS
- FOR STANDARD PANEL DETAILS, SEE SHEET BR231.
 - FOR WALL LOCATION, AND TYPICAL SECTION THRU ROADWAY, SEE ROADWAY DRAWINGS.
 - DOWNSPOUT TO EXPANSION JOINT TO BE ATTACHED TO THE R.E. FACING PANELS. DETAILS OF ATTACHMENT SHOWN ON SHEET BR219.

□ - R6 PANELS
 ▨ - R7 PANELS

STATE OF VERMONT AGENCY OF TRANSPORTATION	
Town Of WALLINGFORD	Bridge No. 80
Highway No. U.S. ROUTE 7	Log Sta. Surv. Sta.
U.S. ROUTE 7 OVER RAILROAD MSE WALLS - ELEVATION - ABUT NO. 2	
Designed By LJW	Drawn By REC
Checked By AJP	Date 10/94
Bridge Design Supervisor EMM	Date 4/95
PROJECT WALLINGFORD	PROJECT NO. BRS 0137 (13)
I.G.C. Info. 	Bridge Sheet No. BR227
Sheet 87 of 113	

B&J BARNES AND JARNIS, INC.
 CONSULTING ENGINEERS
 25 STUART STREET, 6TH FL.
 BOSTON, MASSACHUSETTS