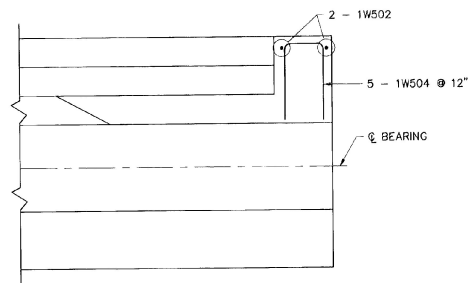
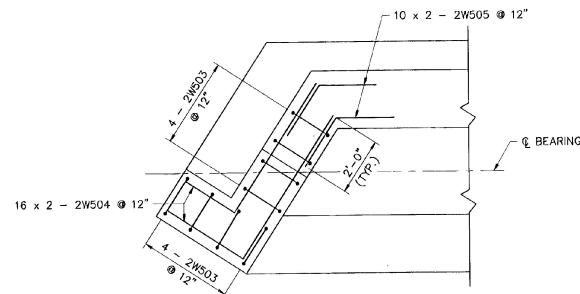


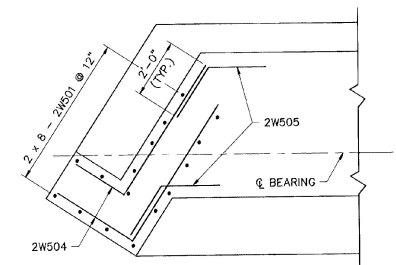
TYPICAL WALL SECTION



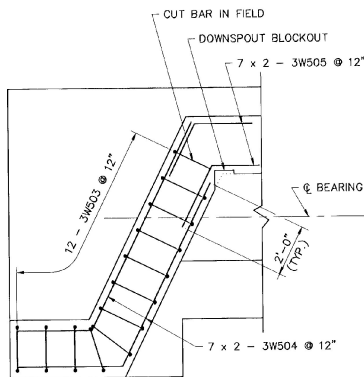
DETAIL OF WALL 1 REINFORCING



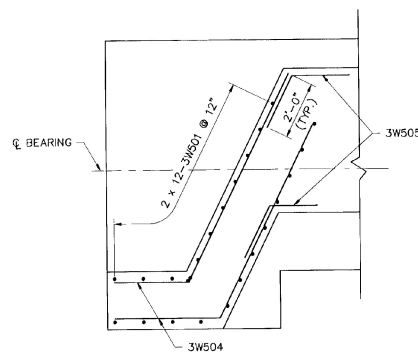
DETAIL OF WALL 2 REINFORCING ABOVE LEVEL OF BRIDGE SEAT



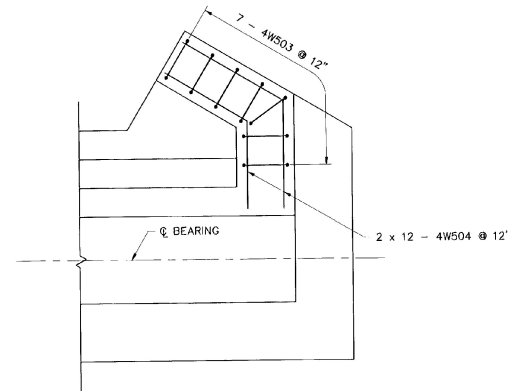
DETAIL OF WALL 2 REINFORCING BELOW LEVEL OF BRIDGE SEAT



DETAIL OF WALL 3 REINFORCING ABOVE LEVEL OF BRIDGE SEAT



DETAIL OF WALL 3 REINFORCING BELOW LEVEL OF BRIDGE SEAT



DETAIL OF WALL 4 REINFORCING

NOTE :

1. TYPICAL ABUTMENT REINFORCING NOT SHOWN FOR CLARITY. SEE SHEETS BR221 AND BR222 FOR ABUTMENT STEM REINFORCING.



STATE OF VERMONT
AGENCY OF TRANSPORTATION

Town Of	WALLINGFORD	Bridge No.	80
Highway No.	U.S. ROUTE 7	Log Sta.	
		Surv. Sta.	
U.S. ROUTE 7 OVER RAILROAD WINGWALL REINFORCING DETAILS			
Designed By	GK	Drawn By	RUL/JNC
Checked By	EMM	Date	4/95
		Bridge Design Supervisor	EMM
		Date	4/95
PROJECT	WALLINGFORD	PROJECT NO.	BRS 0137 (13)
I.G.C. Info.			
Bridge Sheet No.	BR224	Sheet	84 of 113



BARNES AND JARNIS, INC.
CONSULTING ENGINEERS
25 STUART STREET, 6TH FL.
BOSTON, MASSACHUSETTS