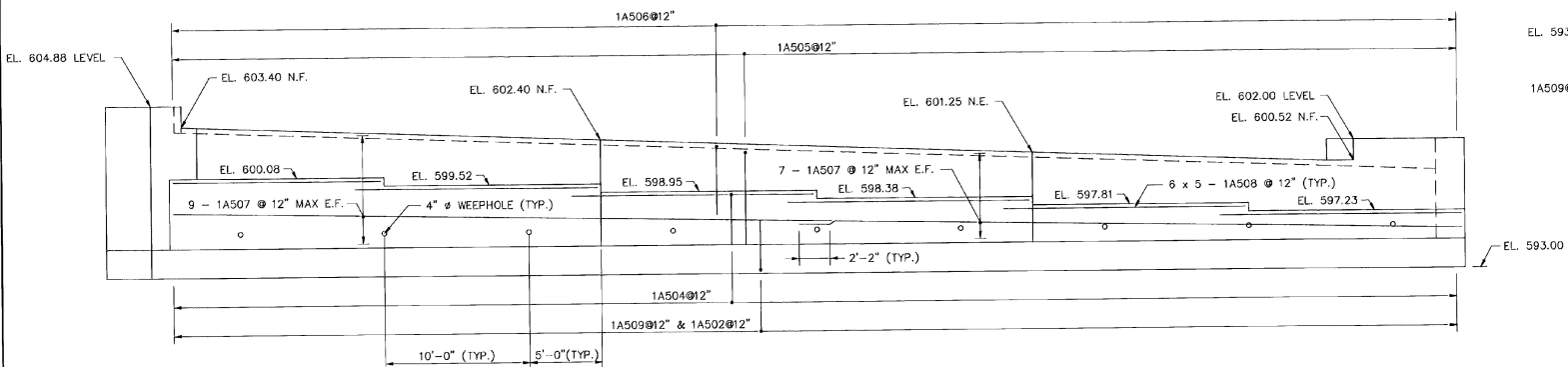
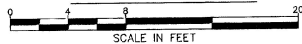
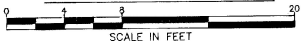


PLAN - ABUTMENT 1

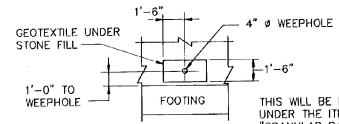


ELEVATION - ABUTMENT 1



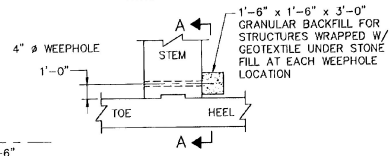
NOTES:

1. FOR FOOTING REINFORCEMENT LAYOUT SEE SHEET BR223.
2. FOR WINGWALL REINFORCEMENT LAYOUT SEE SHEET BR224.
3. N.F. DENOTES NEAR FACE
4. F.F. DENOTES FAR FACE
5. E.F. DENOTES EACH FACE

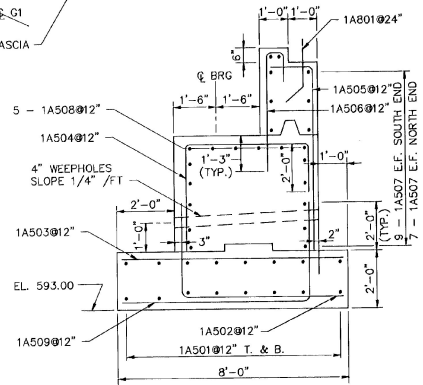


SECTION A-A  
N.T.S.

THIS WILL BE PAID FOR UNDER THE ITEMS "GRANULAR BACKFILL FOR STRUCTURES" AND "GEOTEXTILE UNDER STONE FILL".



TYPICAL WEEPHOLE DETAIL  
N.T.S.



SECTION - ABUTMENT NO. 1



STATE OF VERMONT  
AGENCY OF TRANSPORTATION

Town Of	WALLINGFORD	Bridge No.	80
Highway No.	U.S. ROUTE 7	Log Sta.	
		Surv. Sta.	
U.S. ROUTE 7 OVER RAILROAD			
ABUTMENT NO. 1			
Designed By	GK	Drawn By	KGG/INC
Checked By		Bridge Design Supervisor	EMM
	Date		Date 4/95
	EMM	4/95	

**B-J** BARNES AND JARNIS, INC.  
CONSULTING ENGINEERS  
25 STUART STREET, 6TH FL.  
BOSTON, MASSACHUSETTS

PROJECT	WALLINGFORD	PROJECT NO.	BRS 0137 (13)
I.O.C. Info.		Bridge Sheet No.	BR221
		Sheet	81 of 113