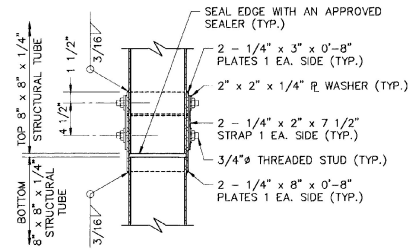
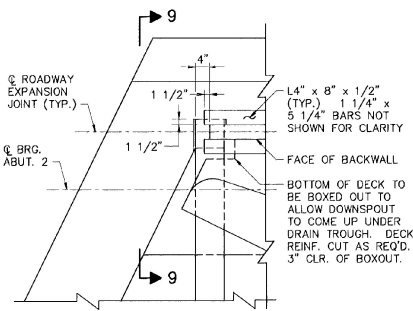


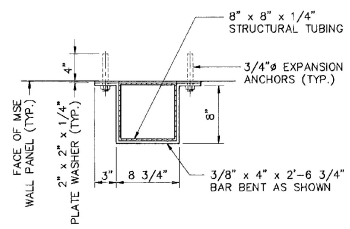
DOWNSPOUT JOINT DETAIL
SCALE IN FEET



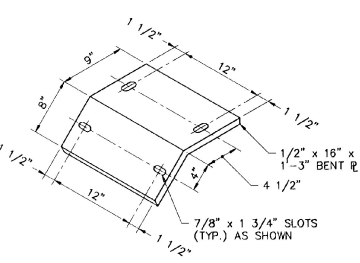
SECTION 15-15
SCALE IN FEET



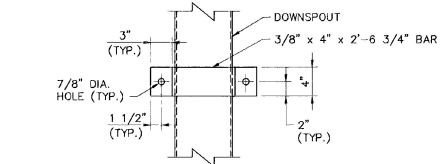
ABUTMENT NO. 2 CORNER DETAIL
SCALE IN FEET



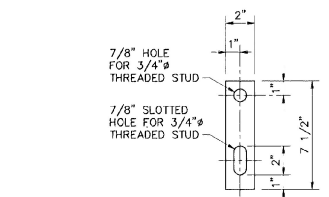
DETAILS FOR ATTACHING DOWNSPOUT TO MSE WALL PANELS
SCALE IN FEET



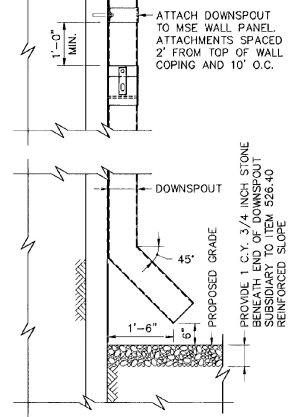
BENT PLATE
SCALE IN FEET



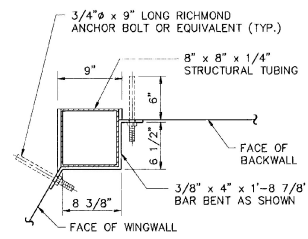
ELEVATION VIEW OF BAR
SCALE IN FEET



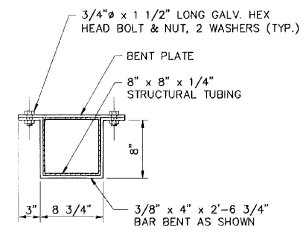
DOWNSPOUT JOINT STRAP DETAIL
SCALE IN FEET



SECTION 9-9
SCALE IN FEET



DETAILS FOR ATTACHING DOWNSPOUT TO ABUTMENT NO. 2
SCALE IN FEET



DETAILS FOR ATTACHING DOWNSPOUT TO BENT BAR
SCALE IN FEET

DOWNSPOUT NOTES

- HOLLOW STRUCTURAL STEEL TUBING SHALL CONFORM TO A-500 OR A-501.
- ALL BARS SHALL CONFORM TO AASHTO M270 GRADE 36 AND SHALL BE GALVANIZED.
- DOWNSPOUT SHALL BE GALVANIZED IN ACCORDANCE WITH ASTM A-123 AFTER FABRICATION.
- ALL DOWNSPOUT BOLTS AND RELATED HARDWARE SHALL BE ASTM A-307 AND SHALL BE GALVANIZED IN ACCORDANCE WITH ASTM A-153 (AASHTO M232).
- WHERE THE GALVANIZING HAS BEEN REMOVED FROM THE DOWNSPOUT OR 4" BAR EITHER BY CUTTING, BURNING, WELDING, PLACING OR ANY OTHER MEANS, IT SHALL BE REPAIRED BY THOROUGHLY CLEANING THE DAMAGED AREAS WITH A WIRE BRUSH AND PAINTING THE DAMAGED AREAS WITH TWO COATS OF ZINC RICH PAINT.
- DOWNSPOUT SHALL BE PAID FOR UNDER THE ITEM 508.55 "STRUCTURAL STEEL" (PLATE GIRDER).
- REINFORCING STEEL IN MSE WALL PANELS SHALL BE LOCATED BEFORE INSTALLING EXPANSION ANCHORS FOR DOWNSPOUT. ANCHORS SHALL BE LOCATED 1" MIN. FROM PANEL REINFORCEMENT.

STATE OF VERMONT AGENCY OF TRANSPORTATION

Town Of	WALLINGFORD	Bridge No.	80
Highway No.	U.S. ROUTE 7	Log Sta.	
		Surv. Sta.	
U.S. ROUTE 7 OVER RAILROAD			
DOWNSPOUT DETAILS @ ABUTMENT #1			
Designed By	GRI	Drawn By	SAM/JNC
Checked By	EMM	Bridge Design Supervisor	EMM
Date	4/95	Date	4/95
PROJECT	WALLINGFORD	PROJECT NO.	BRS 0137 (13)
I.G.C. Info.		Bridge Sheet No.	BR219
		Sheet	79 of 113

B&J BARNES AND JARNIS, INC.
CONSULTING ENGINEERS
25 STUART STREET, 6TH FL.
BOSTON, MASSACHUSETTS