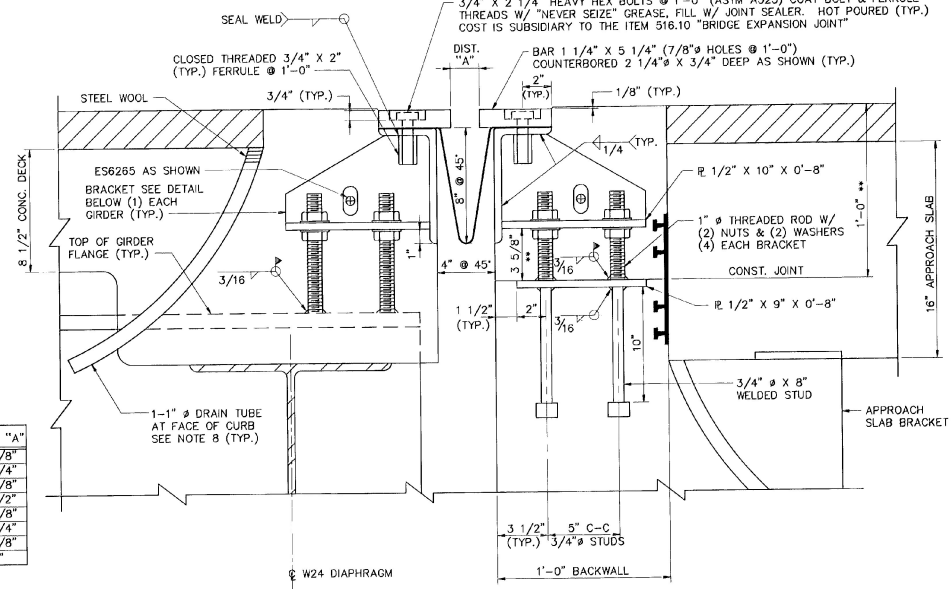
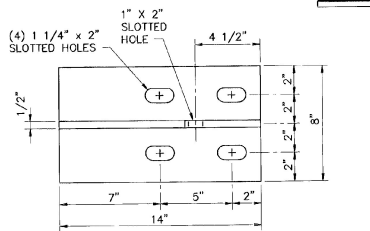


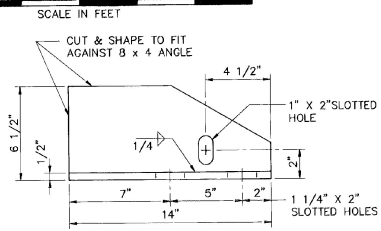
TYPICAL SECTION BETWEEN GIRDERS AT ABUTMENT NO. 2  
(NORMAL TO  $\phi$  BEARING)



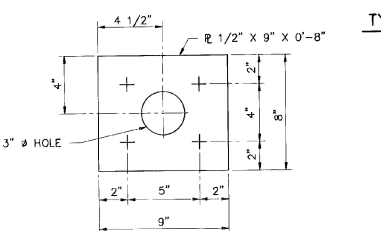
TYPICAL SECTION AT GIRDERS AT ABUTMENT NO. 2  
(NORMAL TO  $\phi$  BEARING)



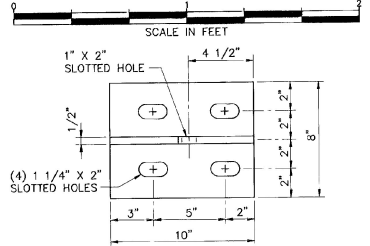
DECK BRACKET PLAN



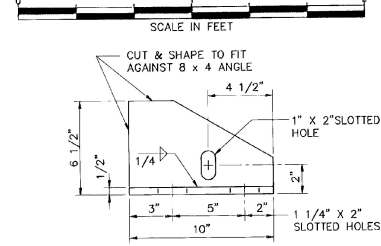
DECK BRACKET ELEVATION



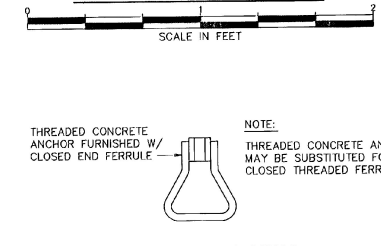
ABUTMENT PLATE PLAN VIEW



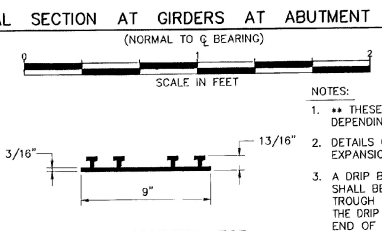
ABUTMENT BRACKET PLAN



ABUTMENT BRACKET ELEVATION

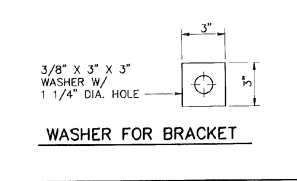


ANCHOR FERRULE DETAIL



P.V.C. WATERSTOP FOR CONSTRUCTION JOINTS

THE COSTS FOR P.V.C. WATERSTOP SHALL BE INCLUDED IN THE UNIT PRICE BID FOR CONCRETE. OTHER CONFIGURATIONS MAY BE USED UPON APPROVAL OF THE STRUCTURES ENGINEER.



WASHER FOR BRACKET

- NOTES:
- THESE DIMENSIONS ARE AS DESIGNED AND MAY CHANGE DEPENDING UPON THE OUTCOME OF THE BEAM PROFILES.
  - DETAILS ON THIS SHEET ARE FOR ITEM 516.10 "BRIDGE EXPANSION JOINT".
  - A DRIP BEAD OF 1/4" X 7" STRIP OF PREFORMED MATERIAL SHALL BE CEMENTED TO THE BOTTOM OF THE FABRIC TROUGH USING AN ADHESIVE APPROVED BY THE MANUF. THE DRIP BEAD SHALL BE APPLIED 1" FROM THE DOWNSPOUT END OF THE TROUGH. (SEE DETAIL E ON SH. BR217).
  - FABRIC TROUGH SHALL BE THOROUGHLY CLEANED AND FLUSHED AFTER PAVING OPERATION.
  - THE EXPANSION JOINT SHALL BE SHOP ASSEMBLED AND SHIPPED AS ONE UNIT.

STATE OF VERMONT  
AGENCY OF TRANSPORTATION

Town Of	WALLINGFORD	Bridge No.	80
Highway No.	U.S. ROUTE 7	Log. Sta.	
U.S. ROUTE 7 OVER RAILROAD			
EXPANSION JOINT DETAILS			
Designed By	GRJ	Drawn By	RJL
Checked By	EMM	Bridge Design Supervisor	EMM
Date	4/95	Date	4/95

**B&J** BARNES AND JARNIS, INC.  
CONSULTING ENGINEERS  
25 STUART STREET, 6TH FL.  
BOSTON, MASSACHUSETTS

PROJECT	WALLINGFORD	PROJECT NO.	BRS 0137 (13)
I.G.C. Info.		Bridge Sheet No.	BR218
		Sheet	78 of 113